
















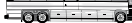
SOLLEVATORI DA FOSSA *PIT JACKS*

La nostra gamma di sollevatori da fossa si rivolge principalmente al settore veicoli pesanti e vanta un altissimo numero di modelli, personalizzazioni e caratteristiche tecniche, mirate a soddisfare qualsiasi esigenza espressa dal cliente.

Our pit jacks range is aimed at the heavy vehicles sector and is composed by many different models, personalizations and features, to satisfy any requirement our client may have.

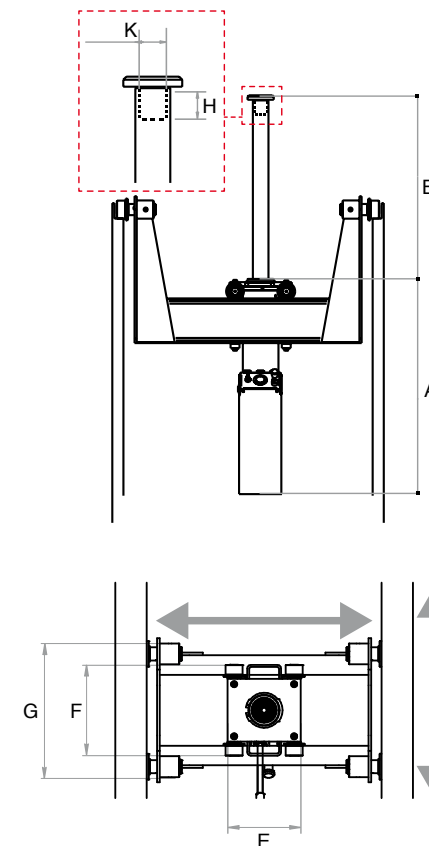
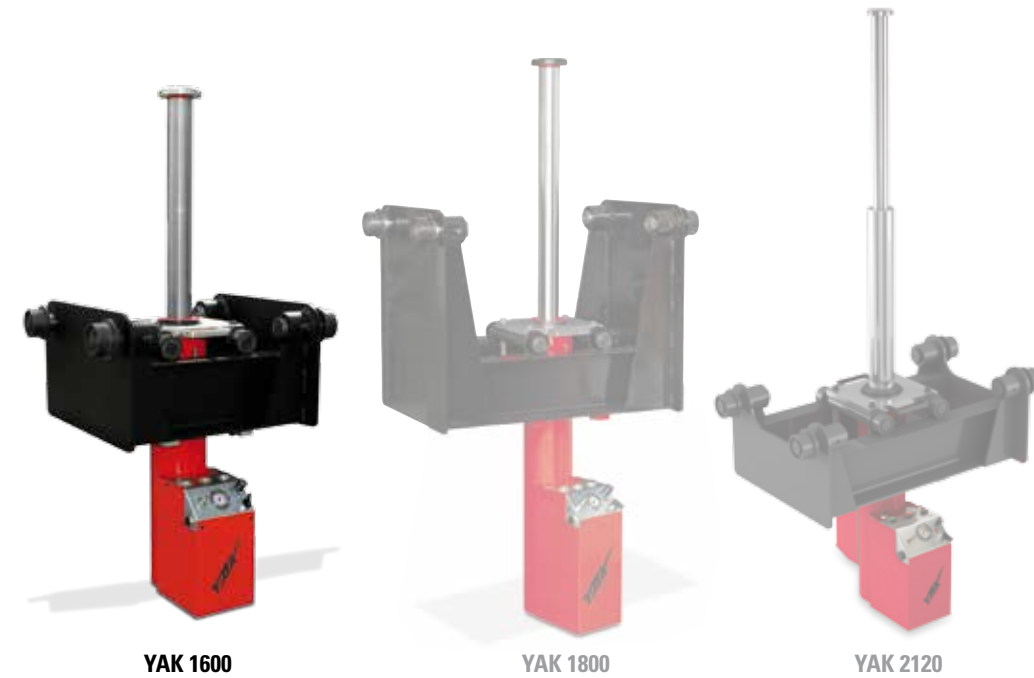
YAK 1610
YAK 1615



| | Mod. | |
|---|----------|----------|
| | YAK 1610 | YAK 1615 |
|  | ● | ● |
|  | ● | ● |
|  | ● | ● |
|  | ● | ● |
|  | ● | ● |
|  | ● | ● |
|  | ● | ● |
|  | ● | ● |
|  | ● | ● |
|  | ● | ● |
|  | ● | ● |
|  | ● | ● |
|  | ● | ● |
|  | ● | ● |

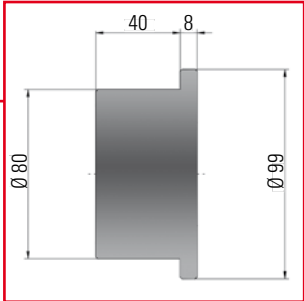
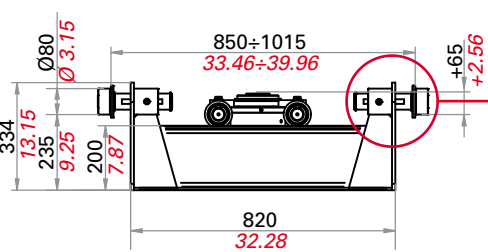
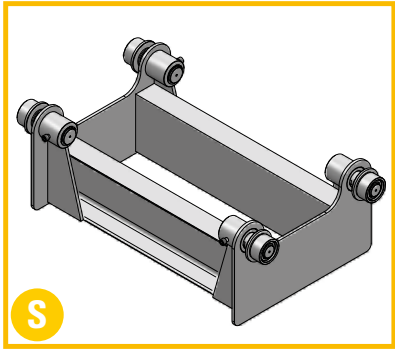
Sollevatore da fossa sospeso, adatto al sollevamento di mezzi pesanti o all'assistenza e alla manutenzione di cambi e differenziali. La nostra gamma offre numerosissimi modelli e personalizzazioni ideate per soddisfare ogni esigenza. Alle 2 diverse centraline oleopneumatiche (EASY e TOP) e alla versione con pompa manuale e avvicinamento rapido, affianchiamo traverse standard di 3 altezze differenti. La corsa dei pistoni va da 600 a 1200 mm (23.62 ÷ 47.24 in). con portate da 5 a 20 t (6÷22 ton). Lo spostamento all'interno della fossa è garantito dai 4 rulli con cuscinetti, forniti con la traversa. I modelli 1620 e 1820 vengono forniti esclusivamente con traversa CUSTOMIZED, costruita appositamente con le misure della fossa del cliente. Su tutti gli altri modelli, è possibile richiedere la personalizzazione della traversa sia per la lunghezza (C), che per l'altezza (P). E' inoltre disponibile una vasta gamma di accessori. Ideale per officine con fosse.

Suspended air hydraulic pit jack for lifting heavy vehicles or for the assistance and maintenance of speed and differential gears. Our range offers a whole host of models and customisations designed to meet all requirements. We use standard jacking beams of 3 different heights which can be matched with the 2 different hydraulic control units (EASY and TOP) and with the hand pump and quick approach version. Piston stroke ranges from 600 to 1200 mm (23.62 ÷ 47.24 in) with capacities of 5 to 20 t (6÷22 ton). Movement inside the pit is guaranteed by the 4 rollers with bearings, supplied with the jacking beam. Models 1620 and 1820 are only supplied with a CUSTOMIZED jacking beam, made specifically for the measurements of the customer's pit. Jacking beam customisation can be asked for on all the other models in terms of length (C) and height (P). A comprehensive range of accessories is also available. Ideal for workshops with pit.

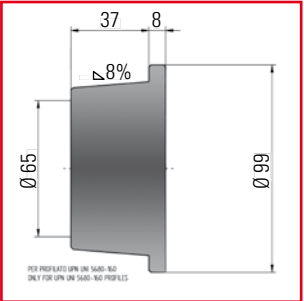


| | YAK 1610 | YAK 1615 |
|---|--------------------------------|--------------------------------|
| Portata <i>Capacity</i> | 10 t <i>11 ton</i> | 15 t <i>16 ton</i> |
| Peso netto <i>Net weight</i> | 260 kg <i>573 lb</i> | 260 kg <i>573 lb</i> |
| Pressione di alimentazione <i>Working air pressure</i> | 8-10 bar <i>116-145 psi</i> | 8-10 bar <i>116-145 psi</i> |
| Consumo d'aria <i>Air waste</i> | 600 nl/min | 600 nl/min |
| | | |
| A | 775 mm <i>30.51 in</i> | 775 mm <i>30.51 in</i> |
| B | 600 mm <i>23.62 in</i> | 600 mm <i>23.62 in</i> |
| E | 310 mm <i>12.2 in</i> | 310 mm <i>12.2 in</i> |
| F | 350 mm <i>13.58 in</i> | 350 mm <i>13.58 in</i> |
| G | 550 mm <i>21.65 in</i> | 550 mm <i>21.65 in</i> |
| H | 60 mm <i>2.36 in</i> | 60 mm <i>2.36 in</i> |
| K | 55 mm <i>2.17 in</i> | 55 mm <i>2.17 in</i> |

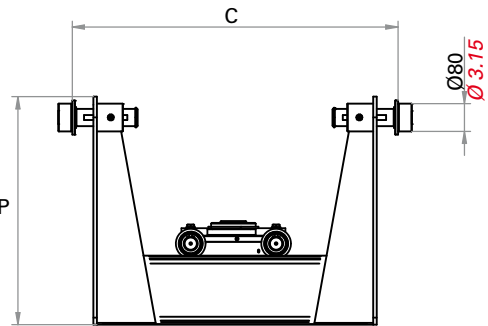
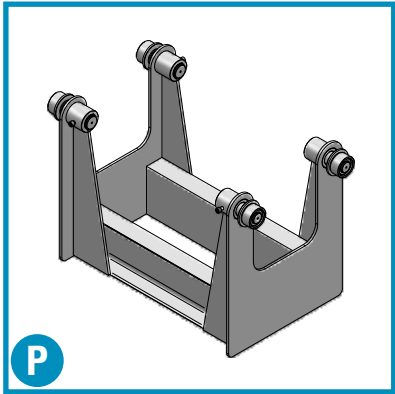
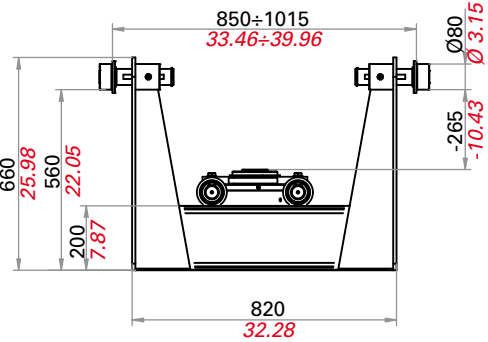
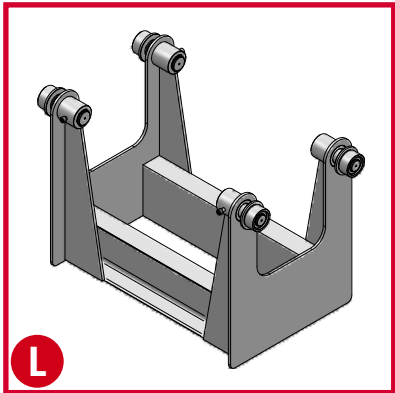
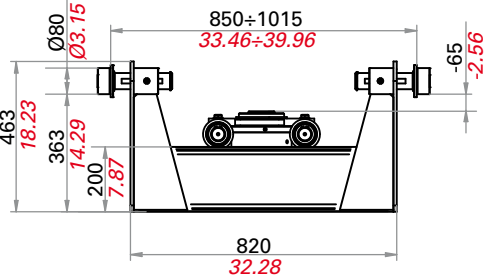
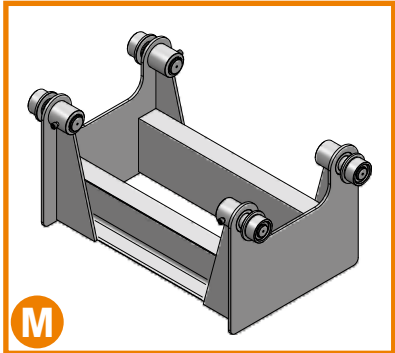
TRAVI / BEAMS



RUOTE STANDARD REGOLABILI
ADJUSTABLE STANDARD WHEELS



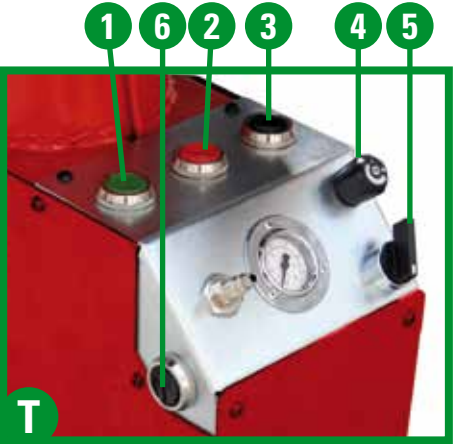
RUOTE CONICHE A RICHIESTA
CONICAL WHEELS ON DEMAND



CENTRALINE / POWER UNITS

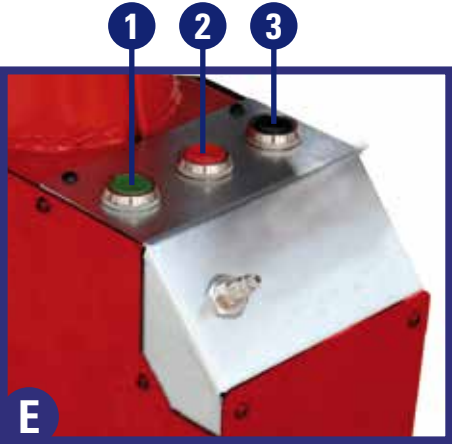
YAK 1610
YAK 1615
YAK 1810
YAK 1815
YAK 2120

VERSIONE TOP
TOP VERSION



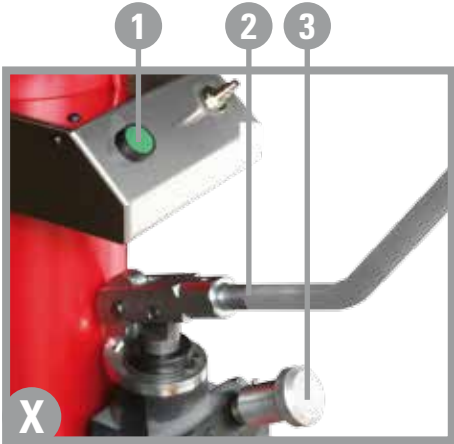
- 1_ Avvicinamento rapido
Quick approach
- 2_ Sollevamento
Lifting
- 3_ Discesa rapida
Quick descent
- 4_ Regolazione velocità motore/sollevamento
Adjusting motor speed/lifting
- 5_ Selettore velocità motore/sollevamento
Motor speed/lifting selector
- 6_ Discesa millimetrica
Fine jack drop adjustment

VERSIONE EASY
EASY VERSION



- 1_ Avvicinamento rapido
Quick approach
- 2_ Sollevamento
Lifting
- 3_ Discesa rapida
Quick descent

VERSIONE MANUALE
MANUAL VERSION



- 1_ Avvicinamento rapido
Quick approach
- 2_ Sollevamento
Lifting
- 3_ Discesa
Descent

| Articolo Item | Corsa Stroke (mm) | Portata Capacity (t) | (US ton) | Larghezza fossa Pit width | | Altezza traversa Beam height | | | | Comandi Controls | | | | |
|------------------|-------------------------|----------------------------|------------|------------------------------|--|---------------------------------|------|------|------|---------------------|------|-----|------|--------|
| | | | | Standard (mm) | Cod. personalizzata Cod. Customized | Cod. | Cod. | Cod. | Cod. | | Cod. | | Cod. | Cod. |
| YAK 1610 | 600 | 10 | 11 | 850-1015 | C | S | M | L | P | Easy | E | Top | T | Manual |
| YAK 1615 | 600 | 15 | 16,5 | 850-1015 | C | S | M | L | P | Easy | E | Top | T | Manual |
| YAK 1810 | 800 | 10 | 11 | 850-1015 | C | S | M | L | P | Easy | E | Top | T | Manual |
| YAK 1815 | 800 | 15 | 16,5 | 850-1015 | C | S | M | L | P | Easy | E | Top | T | Manual |
| YAK 2120 | 1200 | 15/5 | 16.5 / 5.5 | 850-1015 | C | S | M | L | P | Easy | E | Top | T | Manual |