

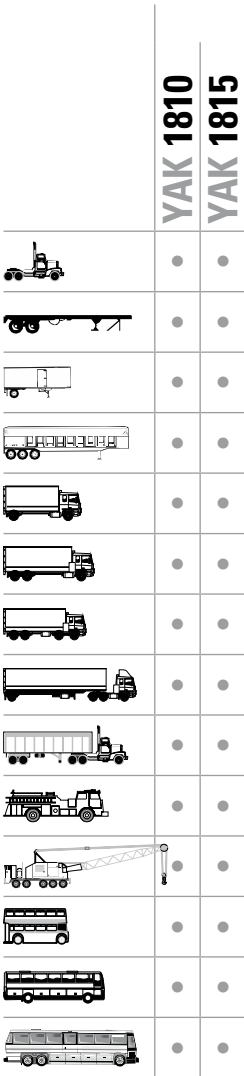


## **SOLLEVATORI DA FOSSA *PIT JACKS***

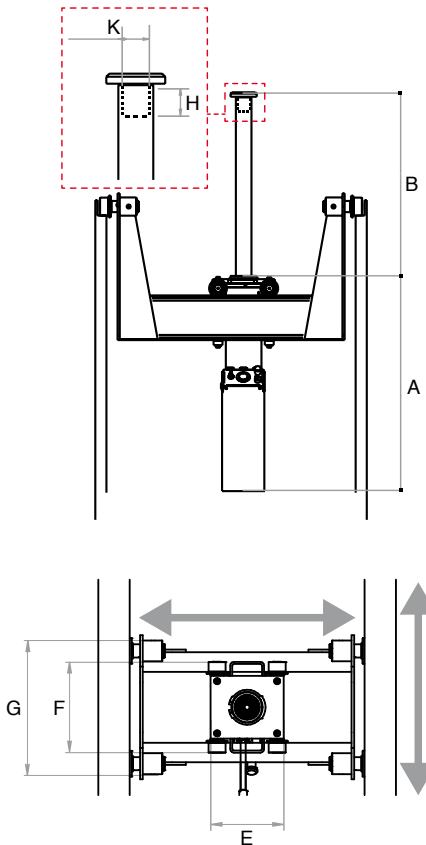
La nostra gamma di sollevatori da fossa si rivolge principalmente al settore veicoli pesanti e vanta un altissimo numero di modelli, personalizzazioni e caratteristiche tecniche, mirate a soddisfare qualsiasi esigenza espressa dal cliente.

*Our pit jacks range is aimed at the heavy vehicles sector and is composed by many different models, personalizations and features, to satisfy any requirement our client may have.*

**YAK 1810**  
**YAK 1815**



Suspended air hydraulic pit jack for lifting heavy vehicles or for the assistance and maintenance of speed and differential gears. Our range offers a whole host of models and customisations designed to meet all requirements. We use standard jacking beams of 3 different heights which can be matched with the 2 different hydraulic control units (EASY and TOP) and with the hand pump and quick approach version. Piston stroke ranges from 600 to 1200 mm (23.62 ÷ 47.24 in) with capacities of 5 to 20 t (6÷22 ton). Movement inside the pit is guaranteed by the 4 rollers with bearings, supplied with the jacking beam. Models 1620 and 1820 are only supplied with a CUSTOMIZED jacking beam, made specifically for the measurements of the customer's pit. Jacking beam customisation can be asked for on all the other models in terms of length (C) and height (P). A comprehensive range of accessories is also available. Ideal for workshops with pit.



	YAK 1810	YAK 1815
Portata <i>Capacity</i>	10 t <i>11 ton</i>	15 t <i>16 ton</i>
Peso netto <i>Net weight</i>	275 kg <i>606 lb</i>	275 kg <i>606 lb</i>
Pressione di alimentazione <i>Working air pressure</i>	8-10 bar <i>116-145 psi</i>	8-10 bar <i>116-145 psi</i>
Consumo d'aria <i>Air waste</i>	600 nl/min	600 nl/min
<b>A</b>	975 mm <i>38.39 in</i>	975 mm <i>38.39 in</i>
<b>B</b>	800 mm <i>31.5 in</i>	800 mm <i>31.5 in</i>
<b>E</b>	310 mm <i>12.2 in</i>	310 mm <i>12.2 in</i>
<b>F</b>	350 mm <i>13.58 in</i>	350 mm <i>13.58 in</i>
<b>G</b>	550 mm <i>21.65 in</i>	550 mm <i>21.65 in</i>
<b>H</b>	60 mm <i>2.36 in</i>	60 mm <i>2.36 in</i>
<b>K</b>	55 mm <i>2.17 in</i>	55 mm <i>2.17 in</i>

