

## Section A-A

## Section B-B

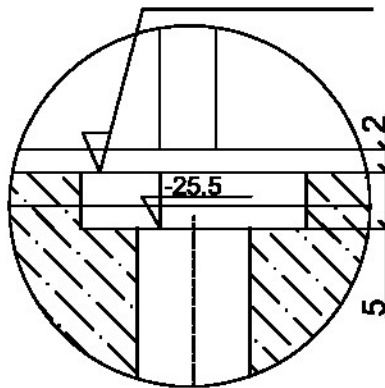
Power supply  
and electrical  
equipment recess

Ø 100 mm double-wall crenated pipe, i. e. of AROT DVK system  
- for the laying of the hydraulic lines

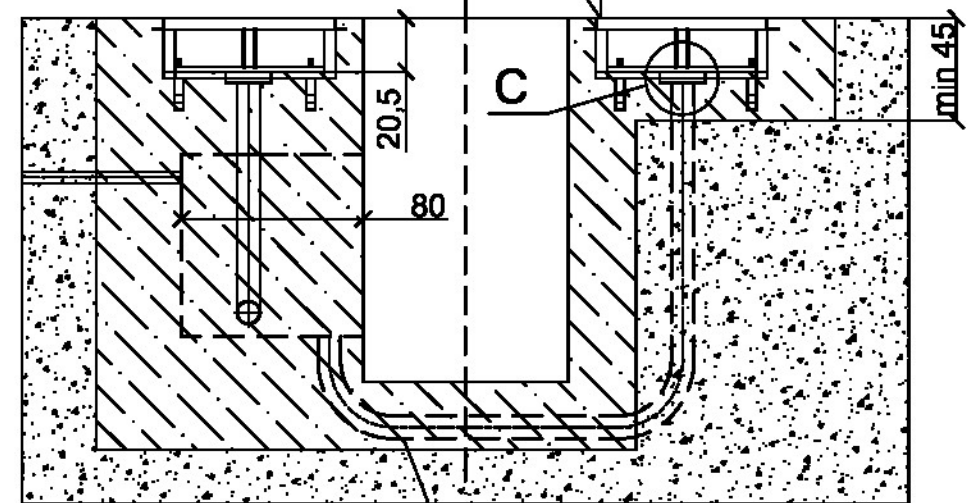
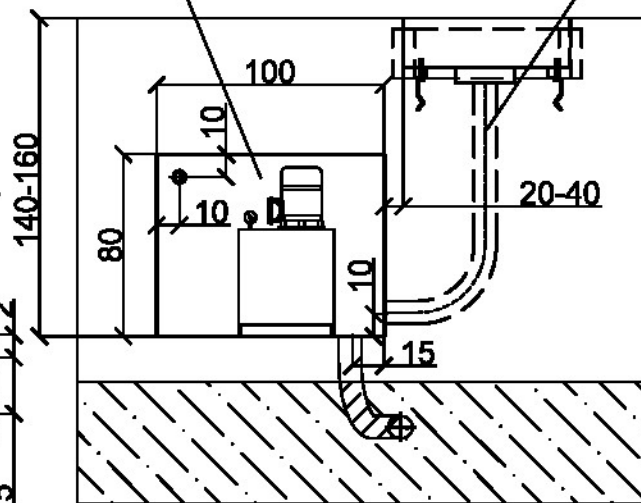
0,00 measurement beds

## Detail C

Concrete screed level

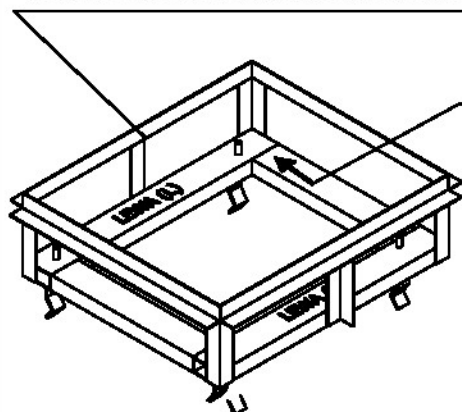


Warning:  
- concrete 2 cm below shape level, left  
frame executed similarly



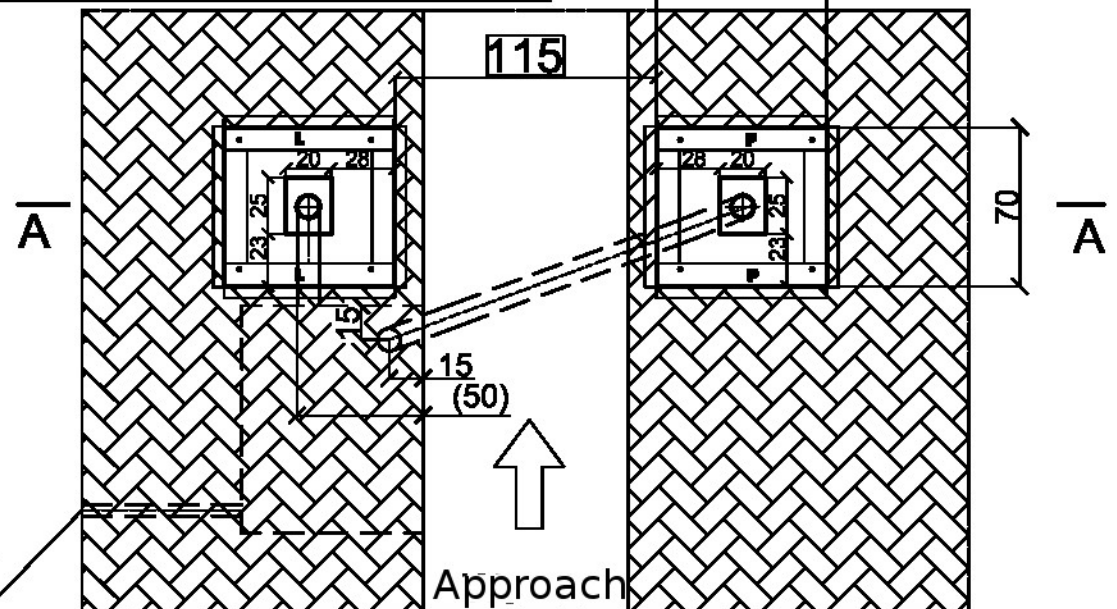
Ø 100 mm double-wall crenated pipe, i. e. of AROT DVK system - for the laying of the  
hydraulic lines  
Before laying out and concreting, lead a rope through the opening for the purpose  
of pulling through of the wire bunch, and leave approx. 1 m slack at both ends.

Foundation box anchored in foundation - to be supplied by manufacturer  
2 pcs. of frames marked L (left) and R (right), and designated direction of approach.  
Top frame of foundation frame shaper component forms the measurement bed plane.



Direction of vehicle approach

Ø 50 mm double-wall crenated pipe, i. e. of AROT  
DVK system - 3 x 400 V power supply  
Run YDY 5 x 1,5 mm<sup>2</sup> cable, length approx. 150 cm,  
to interior of recess.



Dimensions in centimetres



Obowiązuje od: In force from  
01-06-2011

Fundament SZ-16  
SZ-16 foundation