

DRIVEN BY AIR.



# Tyre Inflation Equipment Catalogue



## Forecourt Model Self Contained Unit

The Forecourt model includes Multiple versions such as Air and water, compressor and coin mech options. With the option of two styles you can choose from slim-line and retractor



- Auto-start inflation
- Air and water options
- Default to safe setting

## Forecourt Models

- Audible visual end of cycle signal
- Auto start inflation
- Default to safe setting

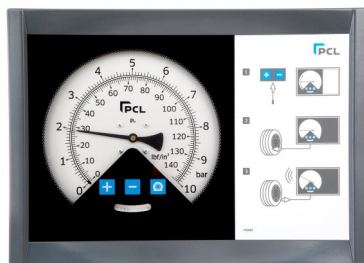
Part No.	Description
D10	Wall Mounted
D20	Pedestal Mounted
D25	Pedestal Mounted Air & Water



## Analogue Unit

- Aluminium Die-cast housing
- Robust electronics provides high accuracy
- Default to safe setting

Part No.	Description
A10	Wall Mounted
A20	Pedestal Mounted



## Compact Unit

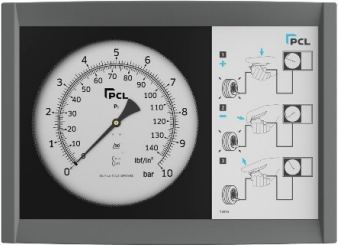
- Electronic reset pressure
- Robust lightweight plastic housing
- Highly accurate ceramic sensor
- Auto-start inflation

Part No.	Description
D60	Wall Mounted



# Mechanical Units

- Wall Mounted or Pedestal Mounted



Part No.	Hose Type	Connector Style
WM1H02	7.6m Co-axial	Single Clip-on
WM1H01	7.6m Co-axial	Twin Hold-on
WM2H02	7.6m Twin Twisted	Single Clip-on
WM2H01	7.6m Twin Twisted	Twin Hold-on
WM3H02	7.6m Air Hose	Single Clip-on
WM3H05	8.5 Black Polyurethane	Euro Style

Part No.	Hose Type	Connector Style
PM1H02	7.6m Co-axial	Single Clip-on
PM1H01	7.6m Co-axial	Twin Hold-on

## 6 Litre "AutoPortair"

The perfect meter for service bays, garage forecourts, showrooms and workshops

- Attractive compact 'take anywhere' unit
- Robust polyethylene outer casing
- Re-charges automatically when returned to charge point



Part No.	Description
P10H02	6 Litre "AutoPortair"

## Pavement Gauge

Globally used and recognised for its robust and easy to use design

- Made from heavy duty allow
- Easy to read toughened glass dial

Part No.	Description
PG1H01	Pavement Gauge
RHA2020	Replacement Hose



# QUBE

Ideal For indoor use, this inflator uses touch screen technology.

3 Modes of inflation include:

- The standard inflate and deflate function
- Tyre shop mode with overpressure
- N2 fill and air to N2 conversion

Part No.	Voltage	Hose Length	Connection
QUBE1	230v (UK Plug)	5m (16 Foot)	Euro Clip-on
QUBE2	230v (EU Plug)	5m (16 Foot)	Euro Clip-on
QUBE2	230v (Aus Plug)	5m (16 Foot)	Euro Clip-on
QUBE4	120v (US Plug)	5m (16 Foot)	Euro Clip-on



## Tyreshop Model

Its modern touchscreen and sensory technology partnered with the latest sensory and modem electronics makes this a cost effective product for any tyre inflation service.

- Beat seat overpressure facility
- Nitrogen (N2) purge
- Auto-start inflation

Part No.	Description
D12	Wall Mounted



## Tyreshop Multi-Tyre Model

Differing from the Tyreshop Model, this can inflate four tyres simultaneously

- Beat seat overpressure facility
- Nitrogen (N2) purge
- Auto-start inflation

Part No.	Description
D13	Wall Mounted Multi Hose Variant



## MK3

A handheld slim line designed gauge. With a cast aluminium body and a rubber bumper it is impact resistant making practical for busy garages and workshops

Part No.	Hose Length	Tyre Valve Connection
ALG3H03	0.53m (21")	Twin hold-on
ALG3H04	0.53m (21")	Single clip-on
ALG3H031	0.36m (14")	Short stem twin hold-on
ALG3H05	1.8m (6ft)	Twin clip-on
ALG3H06	2.7m (9ft)	Twin clip-on
ALG3H061	2.7m (9ft)	Single clip-on



## ACCURA 1 Tyre Inflator

- Robust electronic design
- Ceramic sensor
- Easy to read digital display
- Lightweight and shock resistant construction

Part No.	Hose Length	Tyre Valve Connection	Calibration
DAC1A03	0.53m (21")	Twin hold-on	0-174lbf/in <sup>2</sup>
DAC1A06	2.7m (9ft)	Twin clip-on	0-174lbf/in <sup>2</sup>
DAC1A08	1.8m (6ft)	Euro clip-on	0-174lbf/in <sup>2</sup>
DAC1C03	0.53m (21")	Twin hold-on	0-12bar
DAC1C06	2.7m (9ft)	Twin clip-on	0-12bar
DAC1C08	1.8m (6ft)	Euro clip-on	0-12bar



## DTI Tyre Inflator

This Highly accurate tyre inflator is easy and simple to use with a finger and thumb trigger to inflate and deflate the tyres and a clear screen.

- Low Maintenance
- Suited for tyre shop environments
- Auto power off function to save battery meaning it could last 1000 hours

Part No.	Description	Hose Length	Tyre Valve Connection
DTI08	DTI Tyre Inflator	1.8m	Euro Connector
DTI081	DTI Tyre Inflator	0.5m	Euro Connector



## AirForce Tyre Inflator

- A clear dial display
- Shock resistant design
- Direct valves increases inflation and deflation rates

Part No.	Hose Length	Tyre Valve Connection
AFG1H03	0.53m (21")	Twin hold-on
AFG1H06	2.7m (9ft)	Twin clip-on
AFG1H08	1.8m (6ft)	Euro clip-on



## Truck Tyre inflator

Specialising in large vehicle tyres such as trucks it is made to withstand the physically demanding work environment with its aluminium die cast body and bumper protecting it from serious damage. A magnified linear scale allows for ease of use.

Part No.	Hose Length	Tyre Valve Connector
Alg4H36	3.6m (12ft)	Twin Clip-on



## High Pressure MK3 Tyre Inflator

- Ergonomic design meaning the trigger is positioned at the most practical place for the user
- Magnified linear scale
- Designed for high pressure applications and the aircraft industry



Part No.	Hose Length	Tyre Valve Connection
ALG5H04	1.8m (6ft)	Single clip-on
ALG5H041	1.8m (6ft)	Twin clip-on

## Aircraft Tyre inflator

- Ergonomic design meaning the trigger is positioned at the most practical place for the user
- Magnified linear scale
- Cast aluminium body with impact absorbing rubber bumper



Part No.	Hose Length	Tyre Valve Connection
ALG5A01	2 qty 2m Skydrol Hose	8v1 screw-on and 12v1 screw-on

## Test Unit

PCL's provides a calibration testing equipment unit for ensuring the functionality of other PCL products

- 4 Litre air receiver
- Compatible with most tyre inflation devices up to a maximum recordable pressure of 10 bar
- Weighs only 11.2kg



Part No.	Description
----------	-------------

TE2H01	Test Unit
--------	-----------

## Master Pressure Gauge

Used for checking the sight on gauges

- Used by multiple companies and professions
- Stored in a wooden box with a moulded tray for protection
- Calibration certificate supplied



Part No.	Description
----------	-------------

TE60H01	Master Pressure Gauge
---------	-----------------------

# Twin Hold-on Connectors

- Suitable for inflation of twin tyres
- Colour coded as to their valve style

Part No.	Tyre Valve Connection	Style	Inlet size
CO1A03	Twin hold-on	Open end	Rp 1/4
CO1B03	Twin hold-on	Closed end	Rp 1/4
CO5A03	Twin hold-on (short stem)	Open end	Rp 1/4
CO5B03	Twin hold-on (short stem)	Closed end	Rp 1/4
CO15A01	Twin hold-on (angled stem)	Open end	Rp 1/4



# Twin Clip on Connectors

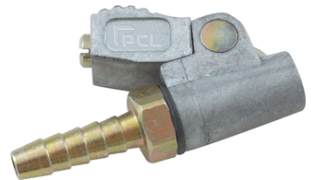
- Clip on feature allows user space from tyre
- Suitable for tyre shop use
- Colour coded handles

Part No.	Tyre Valve Connection	Valve Style	Inlet size
CO3A03	Twin clip-on	Open end	Rp 1/4
CO3B03	Twin clip-on	Closed end	Rp 1/4



# Single Clip-on Connector

- Open and closed option available
- Clip on feature allows user space from tyre
- Suitable for tyre shop use



Part No.	Tyre Valve Connection	Valve Style	Inlet size
CO2E03	Single clip-on	Open end	4.75mm (3/16")
CO2H03	Single clip-on	Open end	6.35mm (1/4")
CO2F03	Single clip-on	Closed end	4.75mm (3/16")
CO2J03	Single clip-on	Closed end	6.35mm (1/4")



## Euro Style Connector

- Open and closed option available
- Clip on feature allows user space from tyre

Part No.	Tyre Valve Type	Valve Style	Inlet size
CO8E72	Euro style clip-on	Open end	4.75mm (3/16")
CO8H72	Euro style clip-on	Open end	6.35mm (1/4")
CO8T73	Euro style clip-on	Open end	Rc 1/4
CO8U73	Euro style clip-on	Closed end	Rc 1/4
CO13A71	12v1 Euro style clip-on	Open end	6.35mm (1/4")



## Other Connectors

A Range of Connectors for specialised applications.

Part No.	Tyre Valve Connection	Valve Style	Inlet size
CO9H03	8v1 screw-on	Open end	6.35mm (1/4")
CO9P03	8v1 screw-on	Open end	Rp 1/4
CO12A03	8v1 in-line hold-on	Open end	Rp 1/4



## Large Bore Connectors

A range of large bore connectors for 12v1 tyres, also known as EM connectors.

Part No.	Tyre Valve Connection	Valve Style	Inlet size
CO7Q02	12v1 clip-on	Closed end	Rc 1/4
CO7P02	12v1 clip-on	Open end	Rc 1/4
CO13A71	12v1 Euro style clip-on	Open end	6.35mm (1/4")
CO10H03	12v1 screw-on	Open end	6.35mm (1/4")
CO10P03	12v1 screw-on	Open end	Rp 1/4
CO11A03	12v1 in-line hold-on	Open end	Rp 1/4



## Valve Core Retracting Unit

Designed for the safe instalment and removal of tyre valve cores during the inflation of commercial vehicles, made safer with a transparent design



Part No.	Tyre Valve Connection	Inlet size
CRT002	Clip-on	6.35mm (1/4")
CRT001	Euro clip-on	6.35mm (1/4")

# MK3 Tyre Inflator Replacement Hoses

Part No.	Hose Length	Description
RHA2031	0.53m (21")	n/a
RHA2121	0.53m (21")	Single clip-on
RHA2122	0.53m (21")	Twin hold-on
RHA2129	0.53m (21")	Euro clip-on
RHA2032	1.8m (6ft)	n/a
RHA2034	1.8m (6ft)	Single clip-on
RHA2126	1.8m (6ft)	Euro clip-on
RHA2033	2.7m (9ft)	n/a
RHA2137	2.7m (9ft)	Single clip-on



RHA2149	2.7m (9ft)	Euro clip-on
RHA2048	3.7m (12ft)	n/a
RHA2040W	0.36m (14") - Wire braided	n/a

# Accura Replacement Hoses

Part No.	Hose Length	Tyre Valve Connection
RHA233	1.8m (6ft)	Euro clip-on
RHA234	2.7m (9ft)	Twin clip-on
RHA235	3.7m (12ft)	Twin clip-on
RHA232	0.53m (21")	Twin hold-on



# AirForce Replacement Hoses

Part No.	Hose Length	Tyre Valve Connection
RHA233	1.8m (6ft)	Euro clip-on
RHA234	2.7m (9ft)	Twin clip-on
RHA235	3.7m (12ft)	Twin clip-on
RHA232	0.53m (21")	Twin hold-on



# QUBE Replacement Hoses

Part No.	Hose Length	Tyre Valve Connection
DS151	5m	Euro clip-on with NPT threads
DS150	5m	Euro clip-on



# Nitrogen Tyre Inflator Replacement Hoses

Part No.	Hose Length	Tyre Valve Connection
----------	-------------	-----------------------

DS64	7.6m GREEN	Euro clip-on
------	------------	--------------



## Tyreshop Digital Replacement Hoses

Part No.	Hose Length	Tyre Valve Connection
----------	-------------	-----------------------

DS99	4 x 9m (manifold block)	Euro Clip-on
------	-------------------------	--------------

DS56	7.6m (25ft)	Single clip-on
------	-------------	----------------

DS55	10m (33ft)	Single clip-on
------	------------	----------------



## Forecourt Digital Replacement Hoses

Part No.	Hose Length	Tyre Valve Connection
----------	-------------	-----------------------

DS54	7.6m (25ft)	Radiator filler hose
------	-------------	----------------------

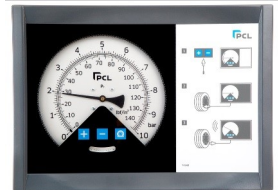
DS50	7.6m (25ft)	Twin hold-on connector
------	-------------	------------------------



## Analogue Unit Replacement Hoses

Part No.	Hose Length	Tyre Valve Connection
----------	-------------	-----------------------

DS50	7.7m (25ft)	Twin Hold-on Connectors
------	-------------	-------------------------



## Analogue Unit Replacement Hoses

Part No.	Hose Length	Tyre Valve Connection
----------	-------------	-----------------------

RHA192	7.6m (25ft) - Twin twsted hose	Single clip-on
--------	--------------------------------	----------------

RHA195	7.6m (25ft) - Co-axial hose	Twin hold-on
--------	-----------------------------	--------------

RHA2023	0.91m (3ft) - Connector hose	n/a
---------	------------------------------	-----

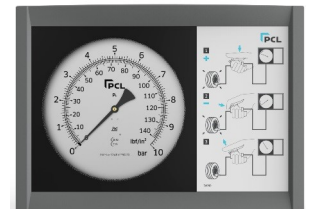
RHA194	7.6m (25ft) - Co-axial hose	Single clip-on
--------	-----------------------------	----------------

RHA224	7.6m (25ft) - Co-axial hose	n/a
--------	-----------------------------	-----

RHA231	7.6m (25ft) - Twin twsted hose	n/a
--------	--------------------------------	-----

RHA193	7.6m (25ft) - Twin twsted hose	Twin hold-on
--------	--------------------------------	--------------

RHA214	0.91m (3ft) - Connector hose	Single clip-on
--------	------------------------------	----------------



DRIVEN BY AIR.



Pneumatic Components Ltd  
Holbrook Rise  
Holbrook Industrial Estate  
Sheffield S20 3GE

T +44 (0)114 248 2712  
F + 44 (0)0114 247 8342  
sales@pclairtechnology.com  
www.pclairtechnology.com