
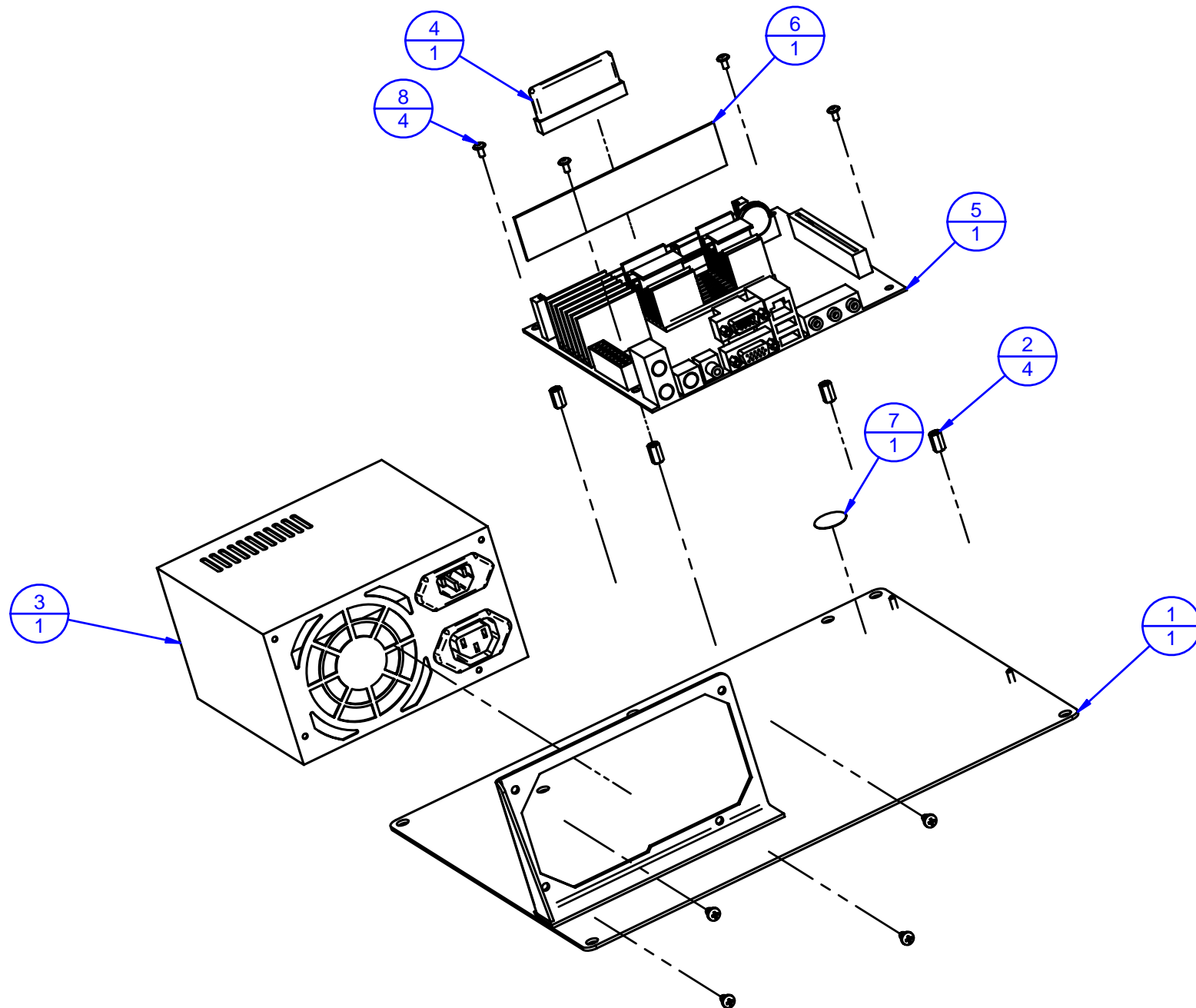



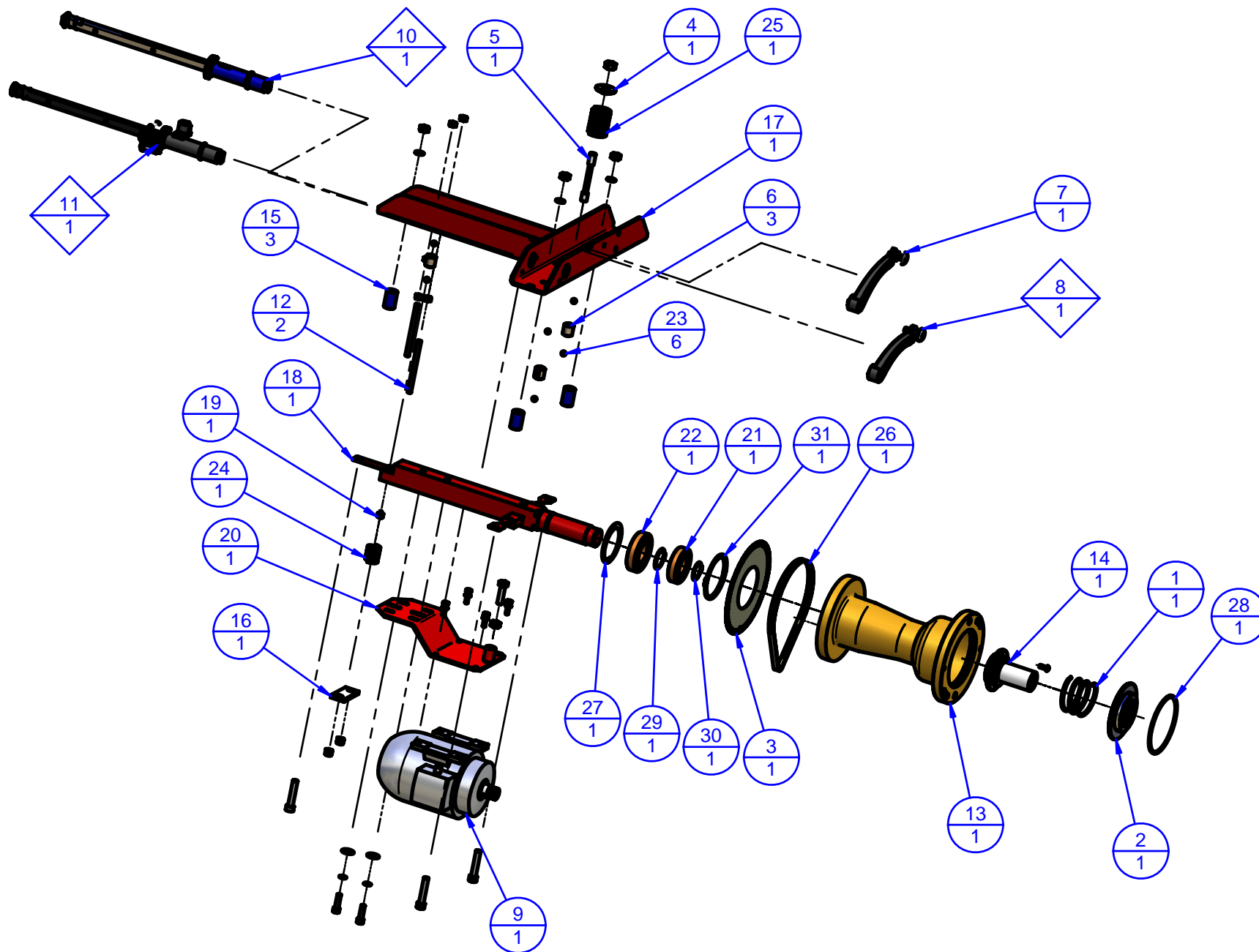
Legenda:		Codice (Code):	Descrizione / Description:	Rev:	Data (Date):	 FASEP 2000 s.r.l Ronta - Firenze - Italy
<div><div>2</div><div>1</div></div> <div>Ref. number Q.ty</div>	<div><div></div><div></div></div> <div>Sub-table exists</div>	3M710	Gruppo elettronico V65x, V64x Win-CE Electronic group V65x, V64x	R1	15/04/10	

POS	RSP	Codice (Code)	Descrizione	Description	Q.tà (Q.ty)
1	x	3ES560	Scheda EPIA LN-10000 EG Progr.	EPIA LN-10000 EG Board	1
2		4M2900	Chassis x Elettronica V65x V64x	Frame	1
3		4M3210	Distanziale Esagonale 6x11xM3	Spacer	4
4		9E2644	Alimentatore ST250 GL	Power Supply	1
5		9E3153	Ata Disk Module 128MB	ATA Disk Module	1
6		9E3260	DDR2 256MB 533 x EPIA 10000	DDR2	1
7		9E3309	Isolatore vite x scheda EPIA	Isolator	4
8		9M2416	Etichetta normata Terra	Sticker	1
9		9V700061	Vite Testa a Bottone Flangiata M3x6	Bolt ISO 7380 F	4

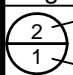
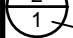


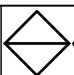
Legenda: <div style="display: flex; align-items: center;"> <div style="border: 1px solid black; border-radius: 50%; width: 20px; height: 20px; display: flex; align-items: center; justify-content: center; margin-right: 5px;"> <div style="text-align: center;">2 1</div> </div> <div> Ref. number Q.ty </div> </div> <div style="display: flex; align-items: center; margin-top: 5px;"> <div style="border: 1px solid black; width: 20px; height: 20px; margin-right: 5px;"></div> <div>Sub-table exists</div> </div>	Codice (Code): <div style="font-size: 24px; font-weight: bold; color: blue;">3M710</div>	Descrizione / Description: Gruppo elettronico V65x, V64x Win-CE Electronic group V65x, V64x	Rev: R0	Data (Date): 30/09/09	<div style="text-align: right;">  FASEP 2000 s.r.l. Ronta - Firenze - Italy </div>
--	--	--	-------------------	---------------------------------	--

POS	RSP	Codice (Code)	Descrizione	Description	Q.tà (Q.ty)
1		4M2900	Chassis x Elettronica V65x V64x	Frame	1
2		4M3210	Distanziale Esagonale 6x11xM3	Spacer	4
3		9E2644	Alimentatore ST250 GL	Power Supply	1
4		9E3153	Ata Disk Module 128MB	ATA Disk Module	1
5	x	9E3259	Scheda EPIA LN-10000 EG	EPIA LN-10000 EG Board	1
6		9E3260	DDR2 256MB 533 x EPIA 10000	DDR2	1
7		9M2416	Etichetta normata Terra	Sticker	1
8		9V700061	Vite Testa a Bottone Flangiata M3x6	Bolt ISO 7380 F	4



Legenda:

 Ref. number
 Q.ty

 Sub-table exists

Codice (Code):

3M800

Descrizione / Description:

Gruppo Oscillante G3.HD (3ph)
G3.HD Motor assy

Rev:

R0

Data (Date):

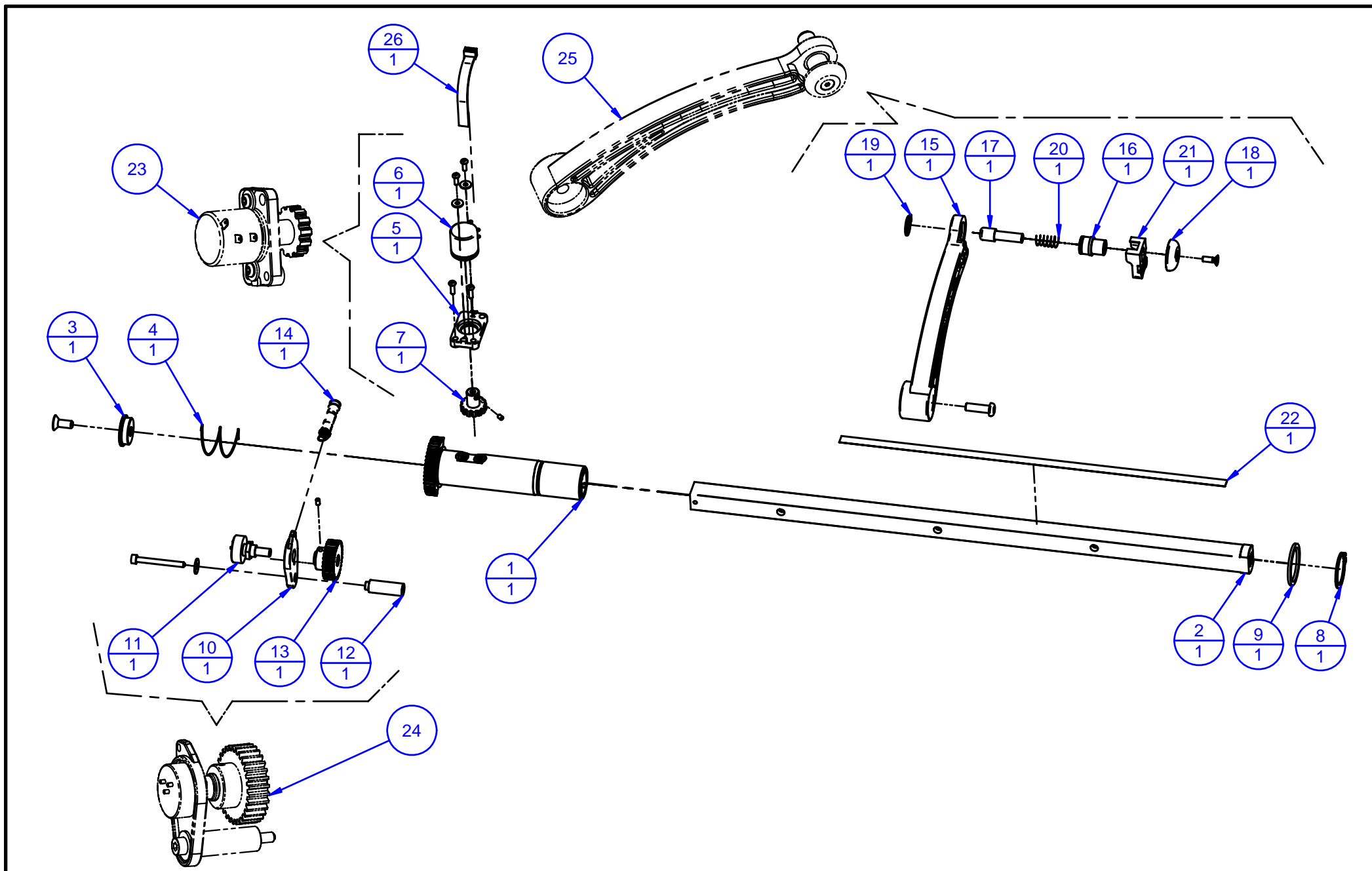
08/11/11


FASEP

FASEP 2000 s.r.l.

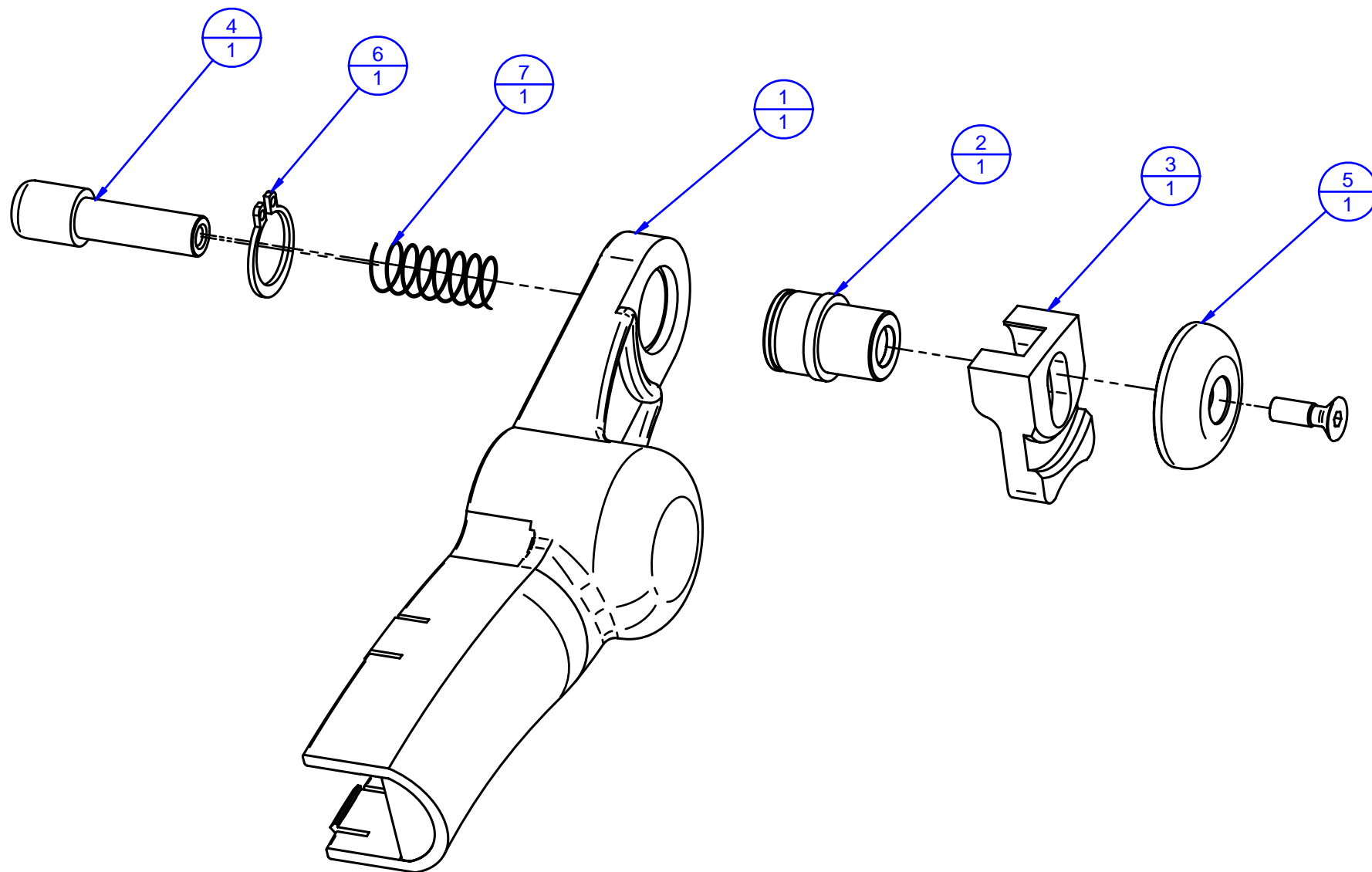
Ronta - Firenze - Italy


POS	RSP	Codice (Code)	Descrizione	Description	Q.tà (Q.ty)
1		2M1849	Molla a compressione ø67x110x4.5	Spring	1
2		2M2141	Disco premi-molla	Disk	1
3		2M2256	Disco ricerca ø194x64T	Position disk	1
4		2M2264	Scodellino per molla G40	Flange	1
5		2M2320	Tirante sfinato per HD2	Pool	1
6	x	3EV556	Sensore PIEZOXID MATROC 2007	Piezo Sensor	3
7		3M2573	Tastatore ALU-S	ALU-S Distance gauge	1
8		3M2573-2	Braccetto tastatore mobile completo	ALU-S Distance measuring rod	1
9		3M3609-1	Motore 230/400 3Ph + Puleggia	Motor + Pulley	1
10		3M537	Gruppo misura Alu-s non sensorizzato	Not sensorized ALU-S system	1
11		3M739	Gruppo misura ALU-SE (corsa lunga)	ALU-SE Measuring System Assy	1
12		4M1004	Barra Filettata M8x112	Pool	2
13		4M2162	Manicotto - Campana HD2	Bell	1
14		4M2164.40	Attacco Flangiato HD ø40	HD Support ø40	1
15		4M2771	Distanziale	Spacer	3
16		4M2813	Traversino	Support	1
17		4M2848	Controtelaio x gruppo HD2 (Light)	Support	1
18		4M2849	Albero Centrale gruppo HD	Central Shaft	1
19		4M2857	Boccolo richiamo x molla	Pin	1
20		4M3605	Supporto motore 3Ph-Inv	Motor Support	1
21		9C0025	CUSCINETTO Radiale 6207 ZZ	Ball Bearing	1
22		9C0026	CUSCINETTO Radiale 6208 ZZ	Ball Bearing	1
23		9C1016	Sfera 3/8"	Ball	6
24		9M1204	Molla G26x32	Spring	1
25		9M2263	Molla G40x51	Spring	1
26	x	9M2839-1	Cinghia TB2 630 6 Nerv.	Belt	1
27		9V093013	ANELLO DI ARRESTO Ø80 I	Seeger Ring	1
28		9V093042	Seeger ø118I senza becchi	Seeger Ring	1
29		9V094014	ANELLO DI ARRESTO Ø40 E	Seeger Ring	1
30		9V094047	ANELLO DI ARRESTO Ø35 E	Seeger Ring	1
31		9V094048	ANELLO DI ARRESTO Ø88 E	Seeger Ring	1



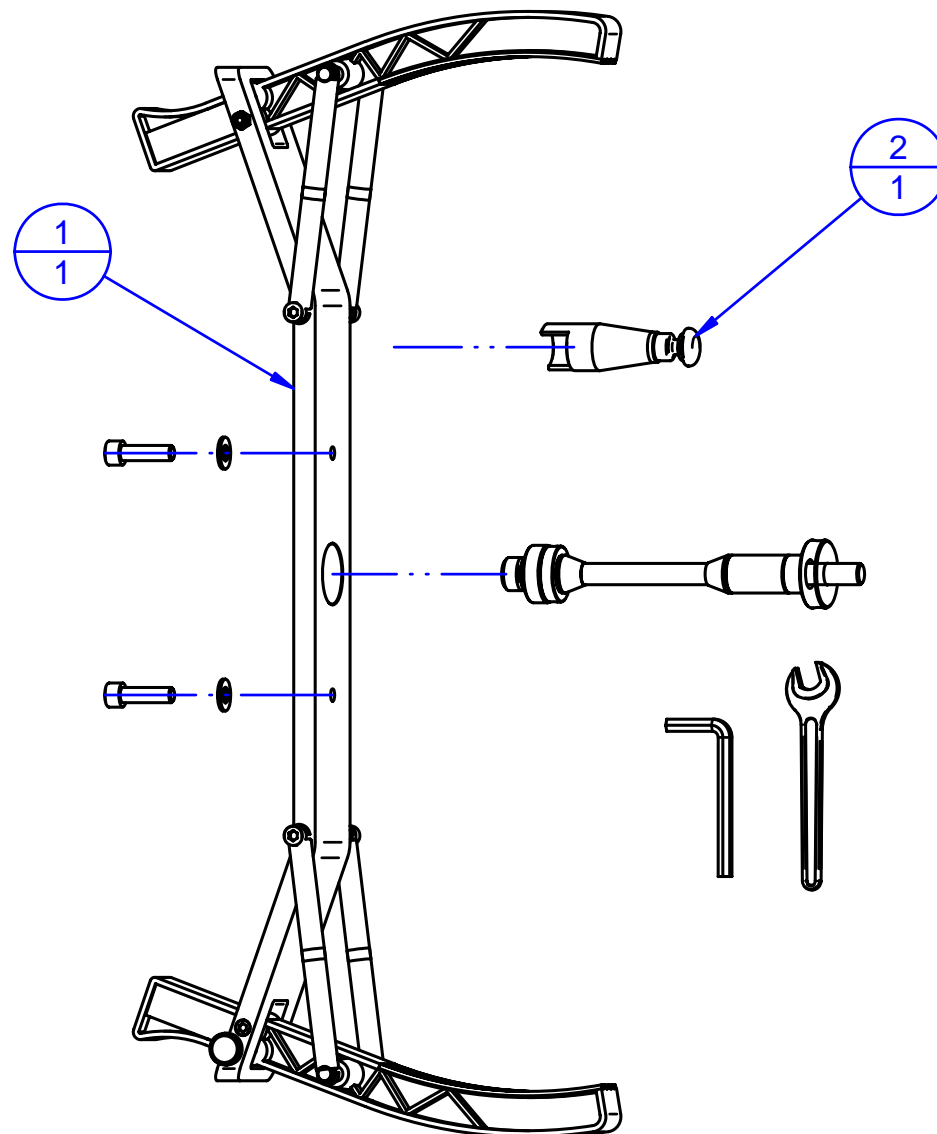
Legenda: <div style="display: flex; align-items: center;"> <div style="border: 1px solid black; border-radius: 50%; padding: 2px; margin-right: 5px;"> <div style="text-align: center;">2 1 </div> </div> <div> Ref. number Q. ty </div> </div> <div style="display: flex; align-items: center; margin-top: 5px;"> <div style="border-left: 1px solid black; border-right: 1px solid black; width: 10px; height: 10px; margin-right: 5px;"></div> <div>Sub-table exists</div> </div>	Codice (Code): 3M739 + 3M2573-2	Descrizione / Description: Gruppo misura ALU-SE (corsa lunga) ALU-SE Measuring System Assy	Rev: R0	Data (Date): 09/09/09	<div style="text-align: right;">  FASEP 2000 s.r.l. Ronta - Firenze - Italy </div>
--	--	---	-------------------	---------------------------------	--


POS	RSP	Codice (Code)	Descrizione	Description	Q.tà (Q.ty)
1		2M2509	Corpo Bandierina ALU-S	ALU-S Body	1
2		4M2510	Asta scorrevole x ALU-S (corsa lunga)	Sliding rod	1
3		2M3498	Scodellino x estensione	Stop Washer disk	1
4		2M2645	Molla a compressione De24 d1 NT30 Lo450	Spring	1
5		4M3276	Supporto potenz. dist. Alu-s	Distance Pot holder	1
6	x	9E2800	Potenzimetro servo 534S103 10K	Servo Pot	1
7		2M2374	Puleggia dentata 13XL	Pulley	1
8		9V700018	Anello Seeger Ø 27E	Seeger Ring	1
9		9V700019	Anello a spessore LMKAS d.35E	Ring	1
10		2M3277	Supporto pot. diametro Alu-S	Diameter Pot holder	1
11	x	9E2786	Potenzimetro 157B103 10K	Pot	1
12		2M2643	Distanziale staffa Alu-s	Spacer	1
13		3M2639	Ingranaggio Z30 Completo	Gear	1
14		2M0962	Molla a Trazione ø9x50	Spring	1
15		2M2573	Braccetto bandierina ALU-S	Rod	1
16		2M3373	Camicia tastatore ALU-S (13-25)	Jacket for ALU-S rod	1
17		2M3374	Pistoncino x tastatore Alu-s (13-25)	Piston	1
18		2M2611	Tastatore x Alu-s	ALU-S rod	1
19		9V700044	Anello seeger ø14E	Seeger Ring	1
20		9M0885	Molla CO12 De9.3 d0.65 NT8 Lo22	Spring	1
21		2M3461	Blocchetto x estrazione piombo	Block	1
22		2M2268-1	Striscia numerata bandierina (90-390)	Scale	1
23*		3M2641	Sensore Distanza x ALU-S	Sensor Distance ALU-S	1
24*		3M2642	Sensore diametro x ALU-S	Sensor Diameter ALU-S	1
25*		3M2573-2	Braccetto Compl. Tast. ALU-SE (13-25)	Rod	1
26		3EC530	Cavo 1140-ALU-SE	Flat Cable	1



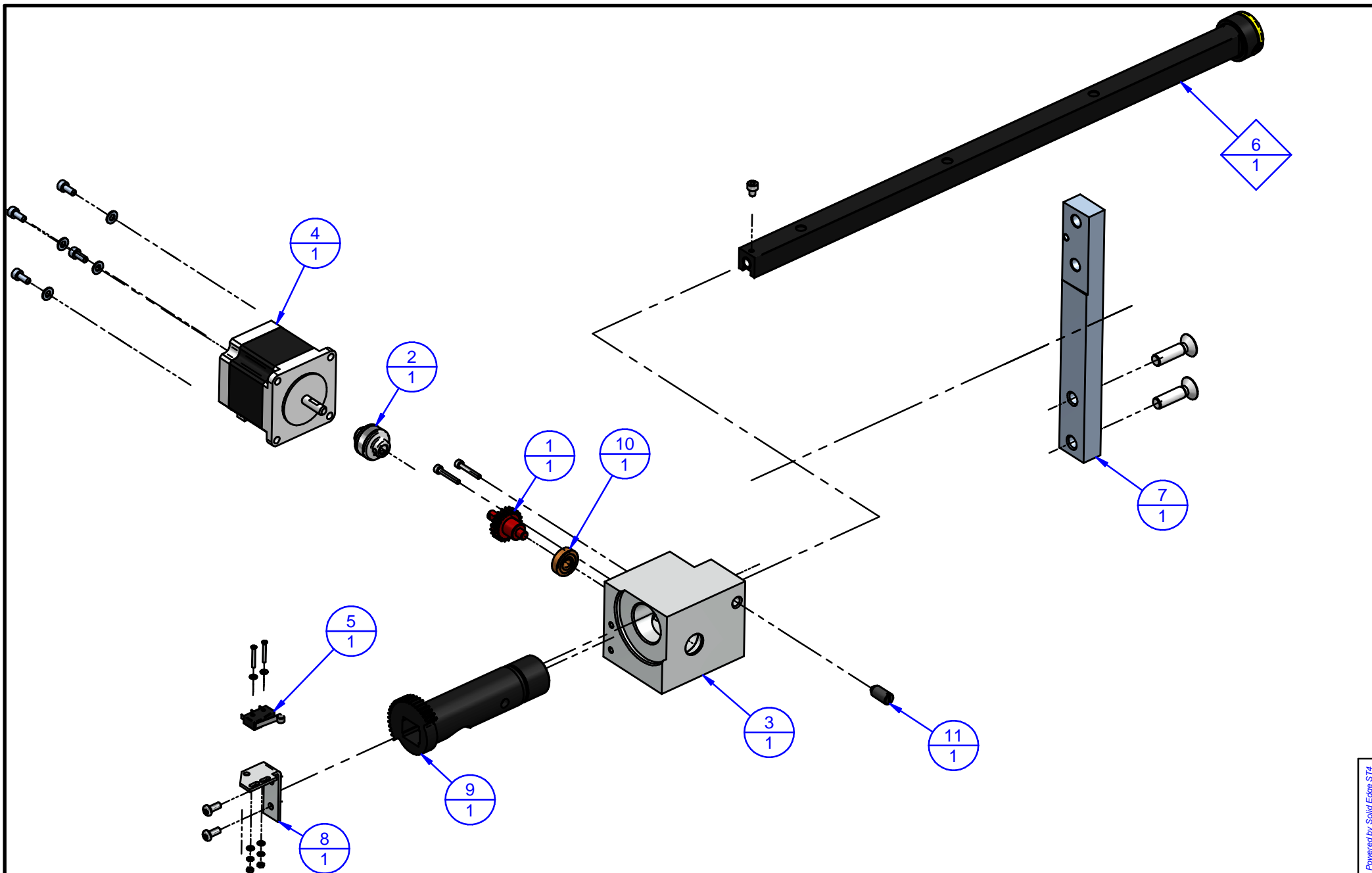
Legenda:	Codice (Code):	Descrizione / Description:	Rev:	Data (Date):
<div style="display: flex; align-items: center;"> <div style="border: 1px solid black; border-radius: 50%; width: 30px; height: 30px; display: flex; flex-direction: column; justify-content: center; align-items: center; margin-right: 5px;"> 2 1 </div> <div> <p>Ref. number</p> <p>Q.ty</p> </div> </div> <div style="display: flex; align-items: center; margin-top: 5px;"> <div style="border: 1px solid black; width: 20px; height: 20px; margin-right: 5px;"></div> <p>Sub-table exists</p> </div>	<div style="font-size: 24px; font-weight: bold; color: blue;">3M3462</div>	<div style="color: blue;"> <p>Prolunga 24"-28" x braccetto ALU-S</p> <p>ALU-SE arm 28" extension</p> </div>	<div style="color: blue;"> <p>R0</p> </div>	<div style="color: blue;"> <p>02/04/08</p> </div> <div style="text-align: right; margin-top: 5px;">  <p>FASEP 2000 s.r.l Ronta - Firenze - Italy</p> </div>

POS	RSP	Codice (Code)	Descrizione	Description	Q.tà (Q.ty)
1		2M3462	Prolunga ALU-S 24"÷28"	Extension	1
2		2M3373	Camicia tastatore ALU-S (13-25)	Jacket for ALU-S rod	1
3		2M3461	Blocchetto x estrazione piombo	Block	1
4		2M3374	Pistoncino x tastatore Alu-s (13-25)	Piston	1
5		2M2611	Tastatore x Alu-s	ALU-S rod	1
6		9V700044	Anello seeger ø14E	Seeger Ring	1
7		9M0885	Molla CO12 De9.3 d0.65 NT8 Lo22	Spring	1



Legenda:		Codice (Code):	Descrizione / Description:	Rev:	Data (Date):	 FASEP 2000 s.r.l Ronta - Firenze - Italy
<div><div>2</div><div>1</div></div> <div>Ref. number Q.ty</div>	<div><div></div><div></div></div> <div>Sub-table exists</div>	3M671.002	Albero Moto AMSF-HD Pro Bike ø40 Motorcycles adapter	R0	21/07/11	

POS	RSP	Codice (Code)	Descrizione	Description	Q.tà (Q.ty)
1		3M1092-7.40	Albero Moto AMSF-HD TS PRO-BIKE ø40	Motorcycles adapter (1 shaft 14 mm + adapters + 4 cones diameter min-max 14-33mm)	1
2		3M3371	Prolunga Corta (70mm)	Adapters	1



Legenda:

2
1 — Ref. number
 1 — Q.ty

◊ — Sub-table exists

Codice (Code):

3M3495.005

Descrizione / Description:

GRUPPO LASER DENT.M1 TESTA GIALLA
 Yellow head laser assy

Rev:

R0

Data (Date):

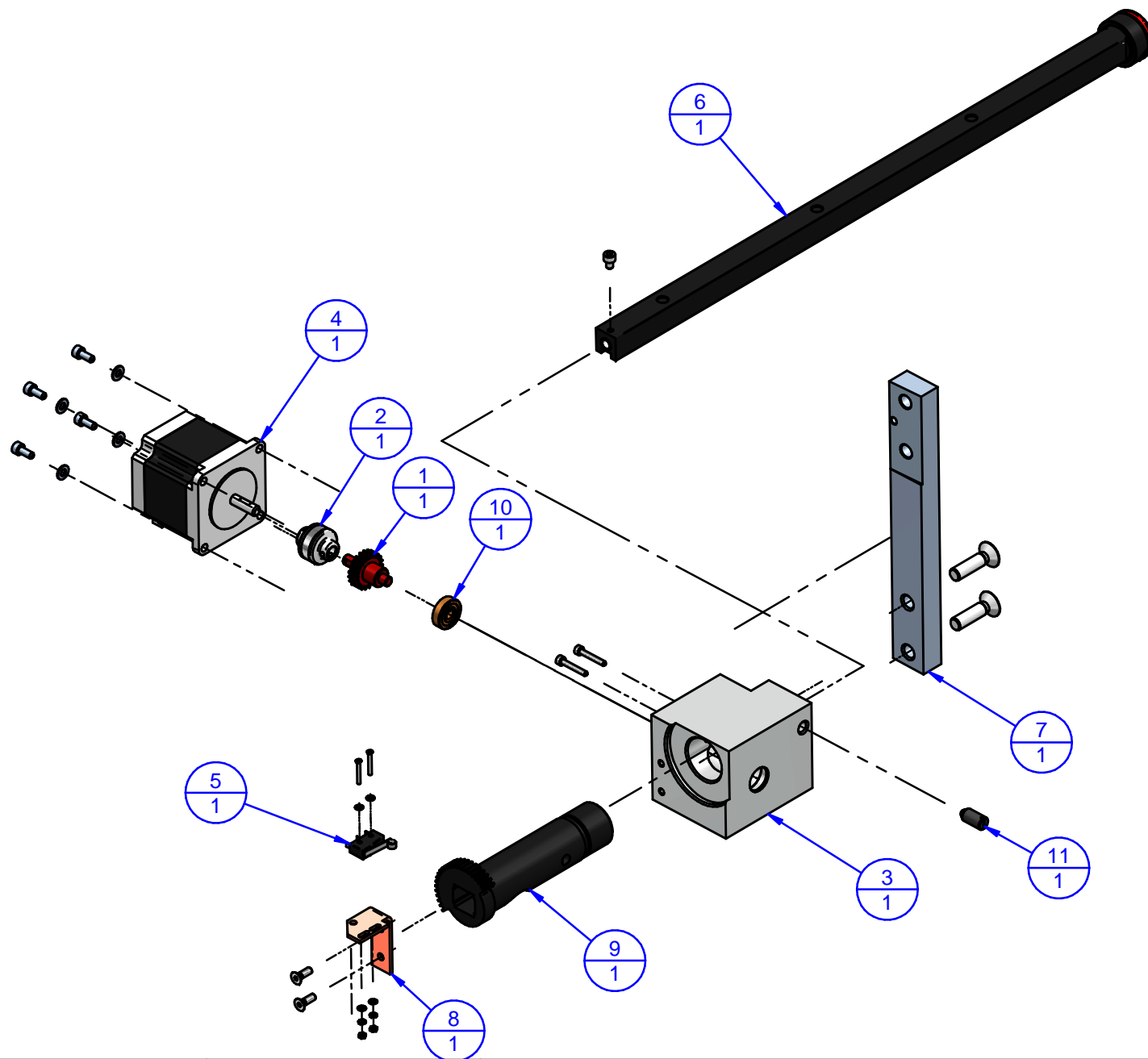
20/05/11



FASEP

FASEP 2000 s.r.l.

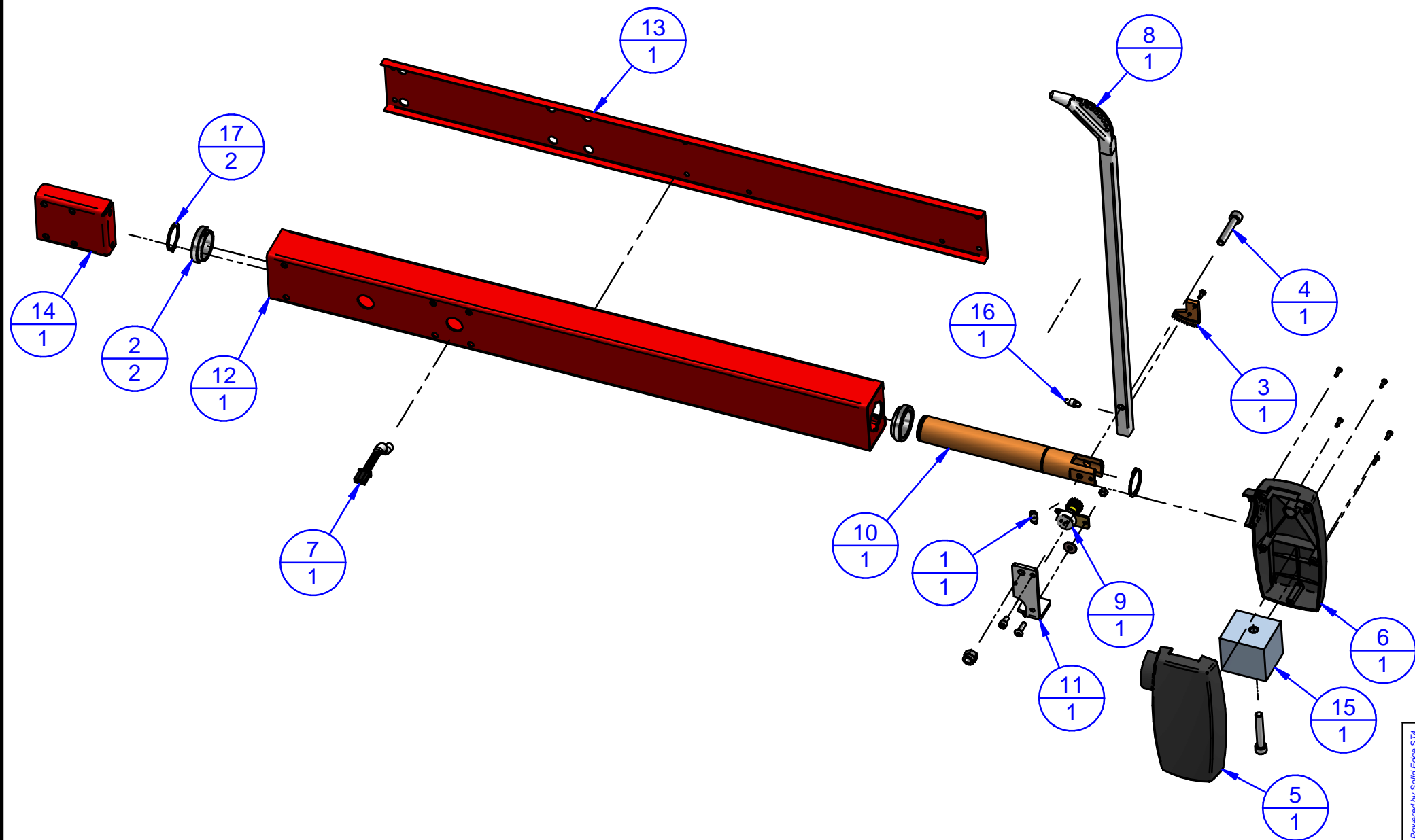
Ronta - Firenze - Italy


POS	RSP	Codice (Code)	Descrizione	Description	Q.tà (Q.ty)
1		2M2688-1	Pignone Z21-M1 per asta Laser	Gear Z21-M1	1
2		2M2691	Giunto DG22 x gruppo Laser	Motor Coubling	1
3		2M3495	Supporto gruppo Laser	Laser Holder	1
4		3M3008-4	Motore Passo-Passo Cablato	stepper motor wired	1
5		3M3010	Micro Cablato	microswitch wired	1
6		3M3493	ASTA LASER DENT.M1 (C.L) TG CABLATA	sliding rod wired	1
7		4M2687C	Staffa fissaggio laser convergente	Laser holder	1
8		4M2690	Staffa x micro gruppo Laser	Support	1
9		4M3494	Corpo x asta scorrevole	ALU-S Body	1
10		9C0028	CUSCINETTO 626 2Z ø6x19 x6	Ball bearing	1
11		9M3029	Pressore a sfera e molla GN615-M8-K Fil	Ball spring plunger	1



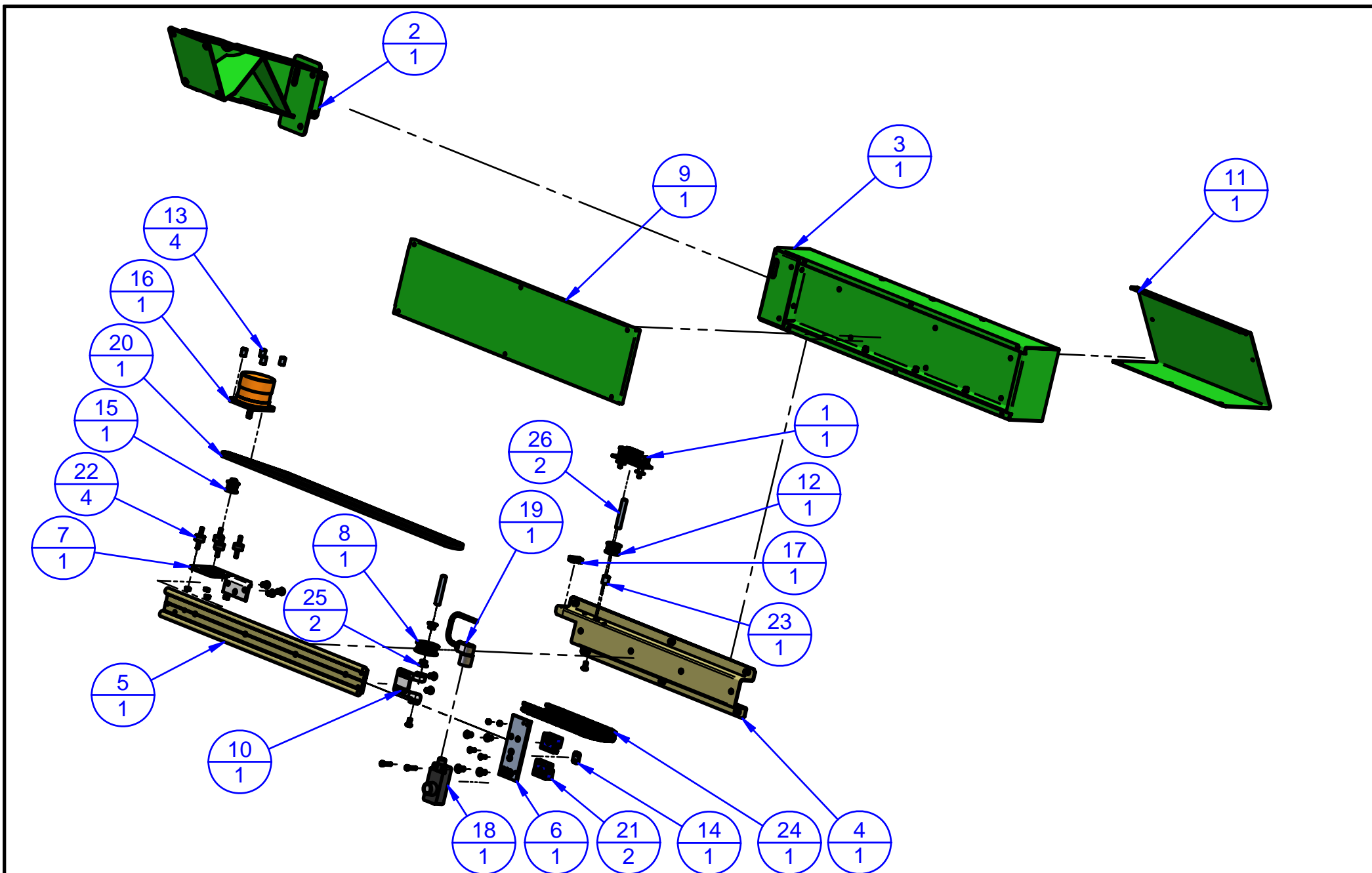
Legenda:		Codice (Code):	Descrizione / Description:	Rev:	Data (Date):	 FASEP 2000 s.r.l. Ronta - Firenze - Italy
<div>2</div> <div>1</div> Ref. number Q.ty	 Sub-table exists	3M3736.004	Gruppo Laser Testa rossa Red head laser assy	R0	03/12/10	

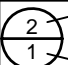
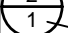

POS	RSP	Codice (Code)	Descrizione	Description	Q.tà (Q.ty)
1		2M2688-1	Pignone Z21-M1 per asta Laser	Gear Z21-M1	1
2		2M2691	Giunto DG22 x gruppo Laser	Motor Coubling	1
3		2M3495	Supporto gruppo Laser	Laser Holder	1
4		3M3008-3	MOTORE PASSO/P SANYO 103-H7123-0740CABL	stepper motor wired	1
5		3M3010	Micro Cablato	microswitch wired	1
6		3M3493TR	ASTA LASER DENT.M1 (C.L) TR CABLATA	Sliding rod Wired	1
7		4M2687C	Staffa fissaggio laser convergente	Laser holder	1
8		4M2690	Staffa x micro gruppo Laser	Support	1
9		4M3494	Corpo x asta scorrevole	ALU-S Body	1
10		9C0028	CUSCINETTO 626 2Z ø6x19 x6	Ball bearing	1
11		9M3029	Pressore a sfera e molla GN615-M8-K Fil	Ball spring plunger	1



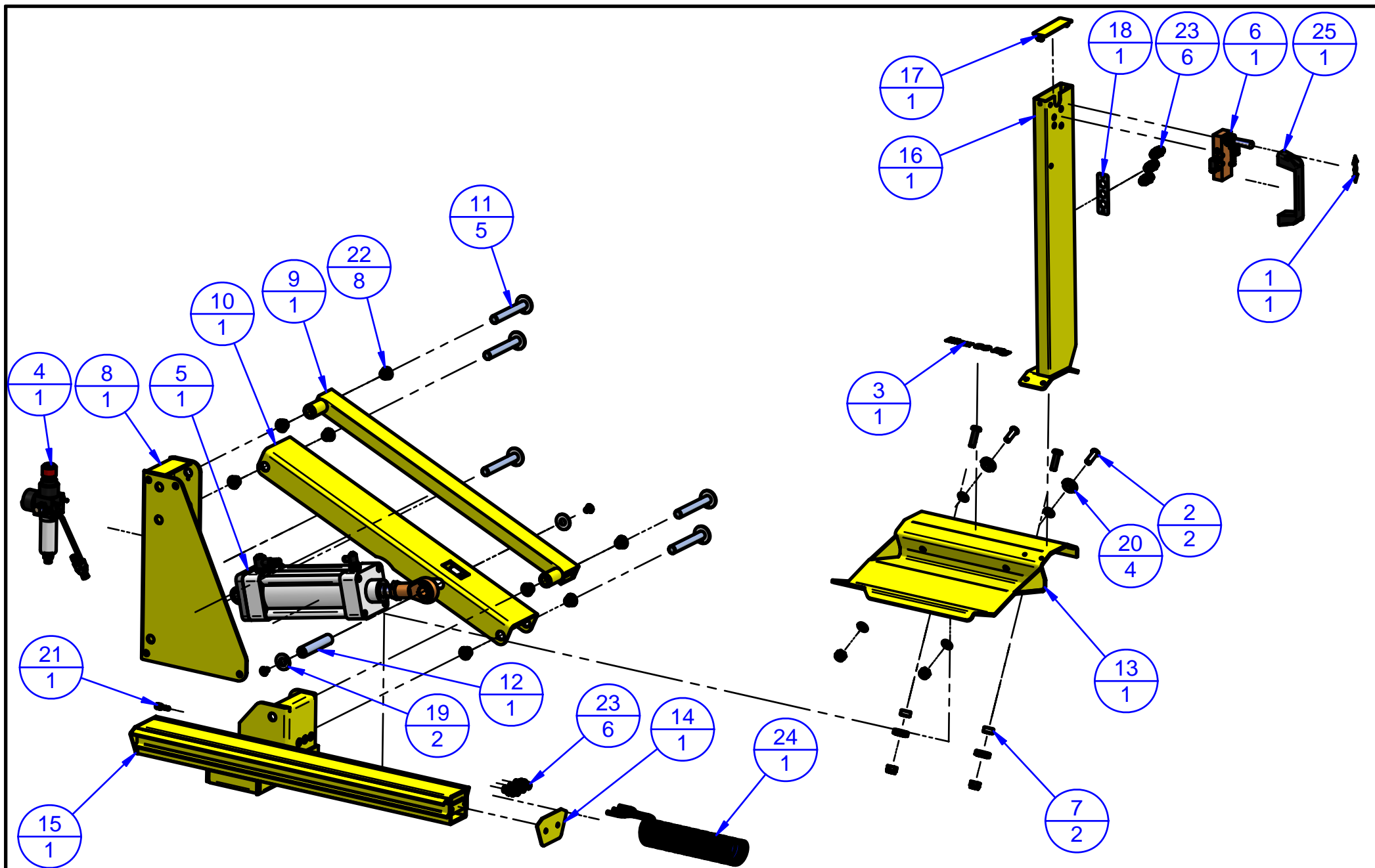
Legenda:		Codice (Code):	Descrizione / Description:	Rev:	Data (Date):	 FASEP 2000 s.r.l. Ronta - Firenze - Italy
<div> <div>2</div> <div>1</div> </div> Ref. number Q.ty	<div> <div>2</div> <div>1</div> </div> Sub-table exists	3M748-3.0002	Sistema Misura Esterno x V643.G3 External measuring rod assy	R0	19/01/12	


POS	RSP	Codice (Code)	Descrizione	Description	Q.tà (Q.ty)
1		2M1057	Molla a trazione	Spring	1
2		2M2869	Anello in Nylon	Bearing	2
3		2M2880	Settore dentato M1	Gear Sector	1
4		2M3022	Vite TCCE M8x42 (Gambo Cil.)	Bolt	1
5		2M3762	Base scatola	basic box	1
6		2M3763	Coperchio Scatola	box cover	1
7		3EC494	Cavo Collegamento Sistema Misura Esterno	Cable	1
8		3M2885	Braccio completo di Beccuccio	measuring arm	1
9		3M2893	Sensore SME Completo	assembled sensor	1
10		4M2889	Perno a snodo	Pin	1
11		4M2892	Squadretta x Sistema Mis. Est.	Pot holder	1
12		4M3519	Supporto Sistema di misura esterno (corto)	Holder	1
13		4M3520	Coperchio x supporto Sistema m. (corto)	SME Cover	1
14		4M3521	Squadretta adattatore x SME	Frame	1
15		4M3788	Contrappeso Interno	Counterweight	1
16		9M2917	MOLLA TR 13 De8 d1 Lo27.3	Spring	1
17		9V094019	Anello Seeger ø30 E	Seeger Ring	2



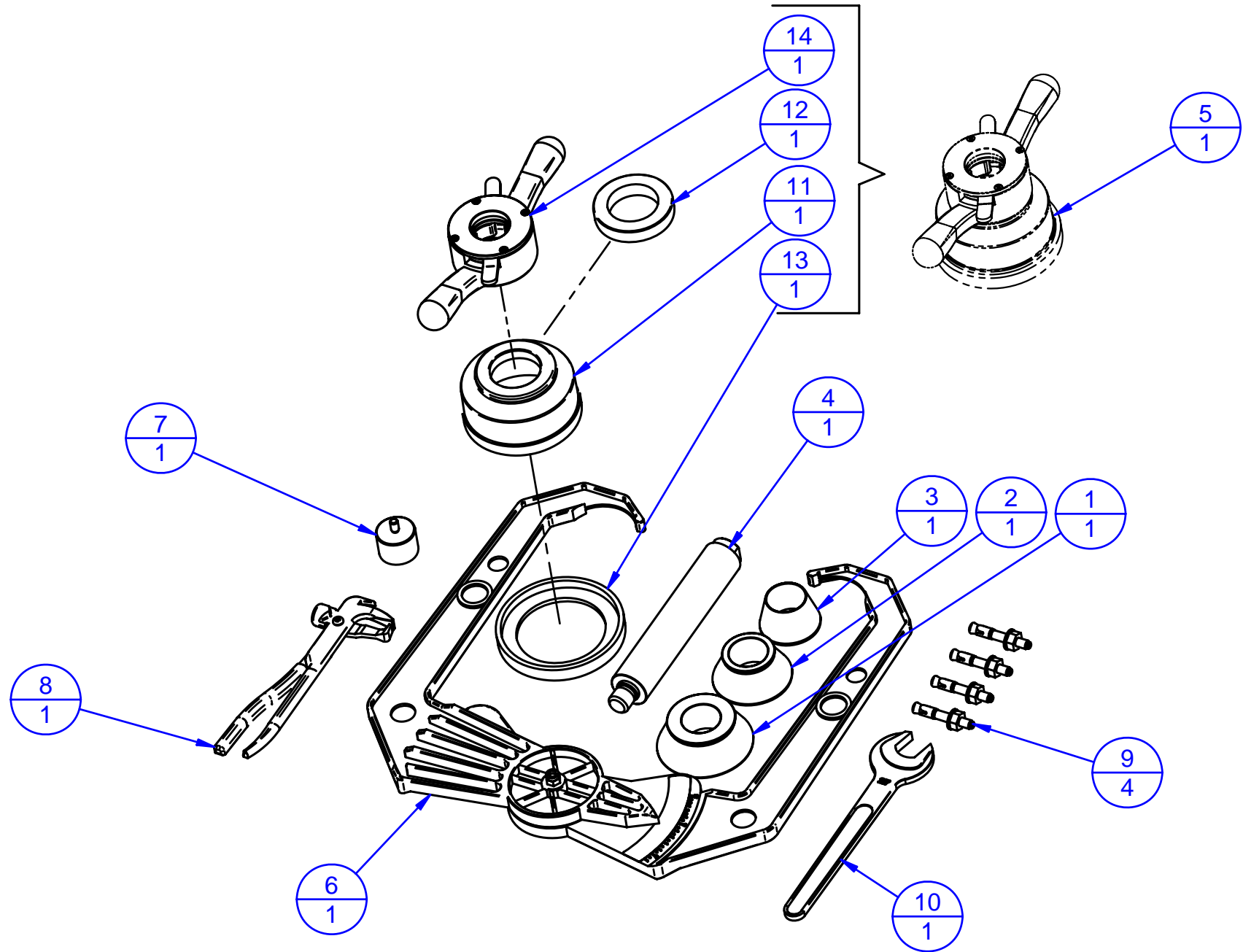
<p>Legenda:</p> <p>  Ref. number  Q.ty </p> <p>  Sub-table exists </p>	<p>Codice (Code):</p> <p>3M777</p>	<p>Descrizione / Description:</p> <p>Gruppo sistema scanner automatico 3D Scanner system</p>	<p>Rev:</p> <p>R0</p>	<p>Data (Date):</p> <p>13/10/11</p>	<p>FASEP</p> <p>FASEP 2000 s.r.l. Ronta - Firenze - Italy</p>
--	---	--	-----------------------	-------------------------------------	--


POS	RSP	Codice (Code)	Descrizione	Description	Q.tà (Q.ty)
1		3ES579	Scheda 1154-00	1154-00 Board	1
2		4M3702	Supporto ancoraggio sistema	support arm	1
3		4M3703	Scatola	Box	1
4		4M3704	Ponticello	base of support	1
5		4M3705	GUIDA DRYLIN WS 10-40-500 (Lavor.)	slide plate	1
6		4M3707	Piastrina x sensore	plate	1
7		4M3708	Supporto x motore	Support for Motor	1
8		4M3710	PULEGGIA DENT. 20XL037F CONDOTTA	Pulley	1
9		4M3711	Coperchio	Cover	1
10		4M3712	Supporto puleggia condotta	Plate Fork	1
11		4M3715	Porta-schermo	Shape	1
12		4M3721-1	PULEGGIA DENT. 13XL037F x GALOPPINO	Pulley	1
13		4M3816	Dado speciale x Motore passo-passo	special nut	4
14		4M3817	Piastrina blocco cinghia	clamp	1
15		4M3818	Puleggia Dent. 10XL037F	Pulley	1
16		9E3008-2	Motore passo passo	Step Motor	1
17		9E3010	Micro interruttore a rotella a saldare	Switch	1
18		9E3365	SENSORE ULTRASUONO	ultrasonic sensor	1
19		9E3366	Connettore + Cavo per Sensore	Connector	1
20		9M1294	CINGHIA DENTATA 450XL025	timing belt	1
21		9M3706	CARRELLO DRYLIN WJ200UM-01-10	sliding element	2
22		9M3798	Puffer MM 15.08 M4x14	Vibration dampers	4
23		9M3799	Boccola PG 08.10.12F	Bush	1
24		9M3800	CATENA P.CAVI 04.07.028 L350,07 + ATTAC.	Chain	1
25		9M3819	BOCCOLA PBG 08.10.07.5 F Glyco Dur	Bush	2
26		9V700092	SPINA CILINDRICA ø8x50 M5	Pin	2



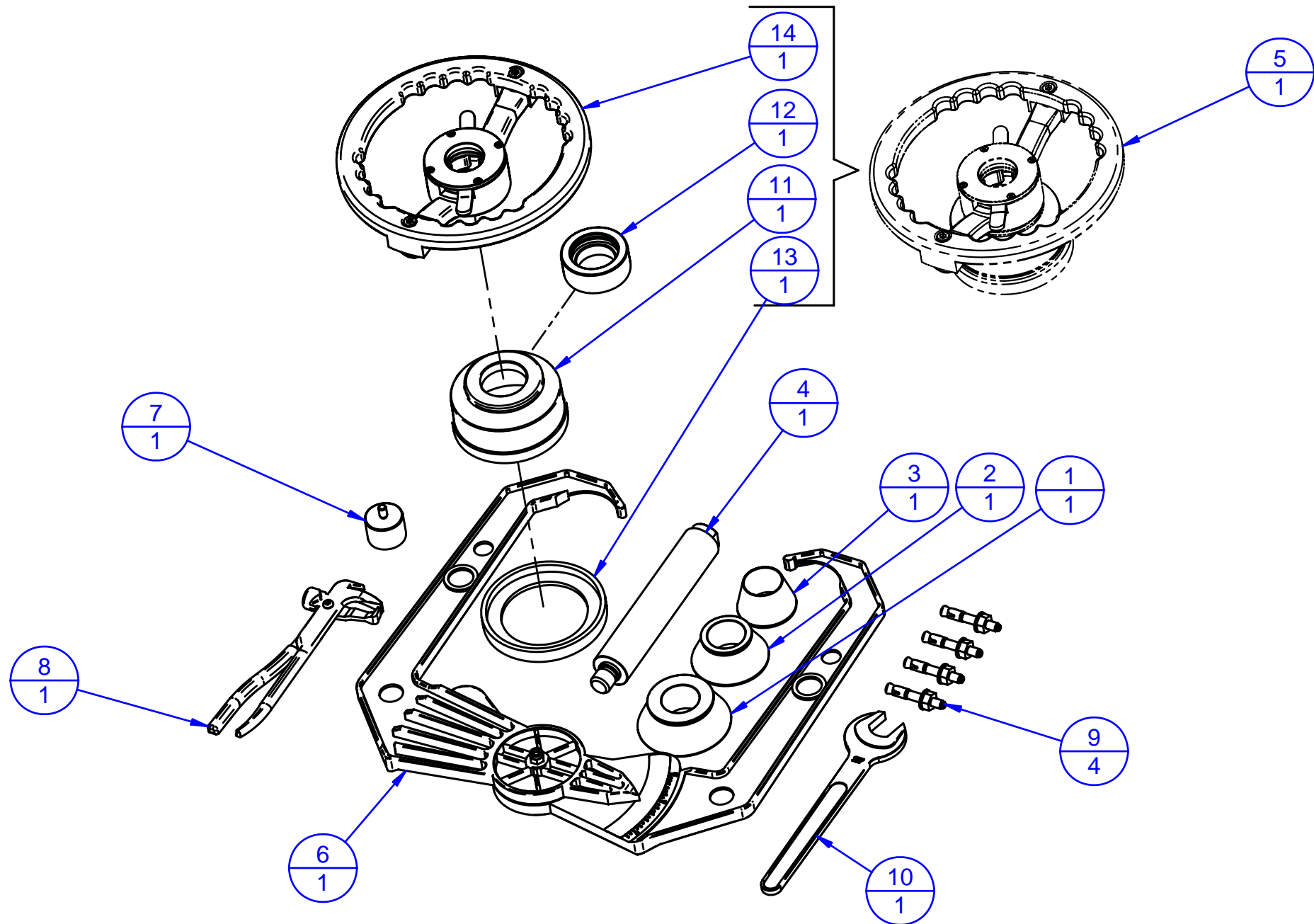
Legenda:		Codice (Code):	Descrizione / Description:	Rev:	Data (Date):	 FASEP 2000 s.r.l. Ronta - Firenze - Italy
<div> <div>2</div> <div>1</div> </div> <div>Ref. number</div> <div>Q.ty</div>	<div> <div>◊</div> <div>◄</div> </div> <div>Sub-table exists</div>	3M791	Sollevatore Pneumatico per ruote da Vettura Lifter	R0	11/10/11	


POS	RSP	Codice (Code)	Descrizione	Description	Q.tà (Q.ty)
1		2M3603	Presp. Freccia di manovra	Sticker	1
2		2M3740	Perno x cuscinetto	Screw	2
3		2M3741	Presp. MAX 90 KG (H20 Nero)	Sticker	1
4		3M2939-5	Set ingresso aria x Lifter	Filter regulator	1
5		3M2966-2	Cilindro completo Lifter	Double-acting cylinder	1
6		3M3574-1	Valvola a leva x Lifter	Lever Valve	1
7		4M1451	Distanziale ø20x10x10	Spacer	2
8		4M3692	Montante x Sollevatore	Base	1
9		4M3693	Braccio Superiore	Upper arm	1
10		4M3694	Braccio Inferiore	Lower arm	1
11		4M3698	Perno Flangiato ø16	Flanged Pin	5
12		4M3699	Perno x pistone	Pin	1
13		4M3730	Pala	Platform	1
14		4M3731	Tappo	Plug	1
15		4M3733	Porta Pala	Support	1
16		4M3803	Montante Pala	Arm	1
17		4M3804	Tappo x montante	Plug	1
18		4M3811	Piastrina x passaparete	Plate	1
19		4M3836	Grembialina ø8x32 svasata	Washer	2
20		9C0037	Cuscinetto Radiale 6200-ZZ (ø10x30x9)	Bearing	4
21		9M3195	RACCORDO RIDUZIONE 50700 6-4	Fitting	1
22		9M3700	BOCCOLA PBG 16.18.12 F Glyco Dur	Bush	8
23		9M3809	RACCORDO PASSAPARETE 50050N ø6	Fitting	6
24		9M3810	Spirale Multitubo blu (3 Tubi) ø6x4	Spiral with polytube	1
25		9P4020	Maniglia a Ponte GAMM MFE/132	Handle	1



<p>Legenda:</p> <div style="display: flex; align-items: center;"> <div style="border: 1px solid black; border-radius: 50%; width: 20px; height: 20px; display: flex; align-items: center; justify-content: center; margin-right: 5px;"> <div style="border-top: 1px solid black; width: 10px;"></div> <div style="margin-top: 5px;">2</div> </div> <div style="margin-right: 10px;">Ref. number</div> <div style="border: 1px solid black; border-radius: 50%; width: 20px; height: 20px; display: flex; align-items: center; justify-content: center; margin-right: 5px;"> <div style="border-top: 1px solid black; width: 10px;"></div> <div style="margin-top: 5px;">1</div> </div> <div>Q.ty</div> </div> <div style="display: flex; align-items: center; margin-top: 10px;"> <div style="border-left: 1px solid black; width: 15px; height: 15px; margin-right: 5px;"></div> <div>Sub-table exists</div> </div>	<p>Codice (Code):</p> <p>3M188-xx.40</p>	<p>Descrizione / Description:</p> <p>Dotazione Standard ø40 Equilibr. con Carter Standard Accessories ø40 for all off-the-car wheel balancers</p>	<p>Rev: R0</p> <p>Data (Date): 27/01/11</p>	<div style="text-align: right;">  <p>FASEP 2000 s.r.l. Ronta - Firenze - Italy</p> </div>
--	---	---	---	---

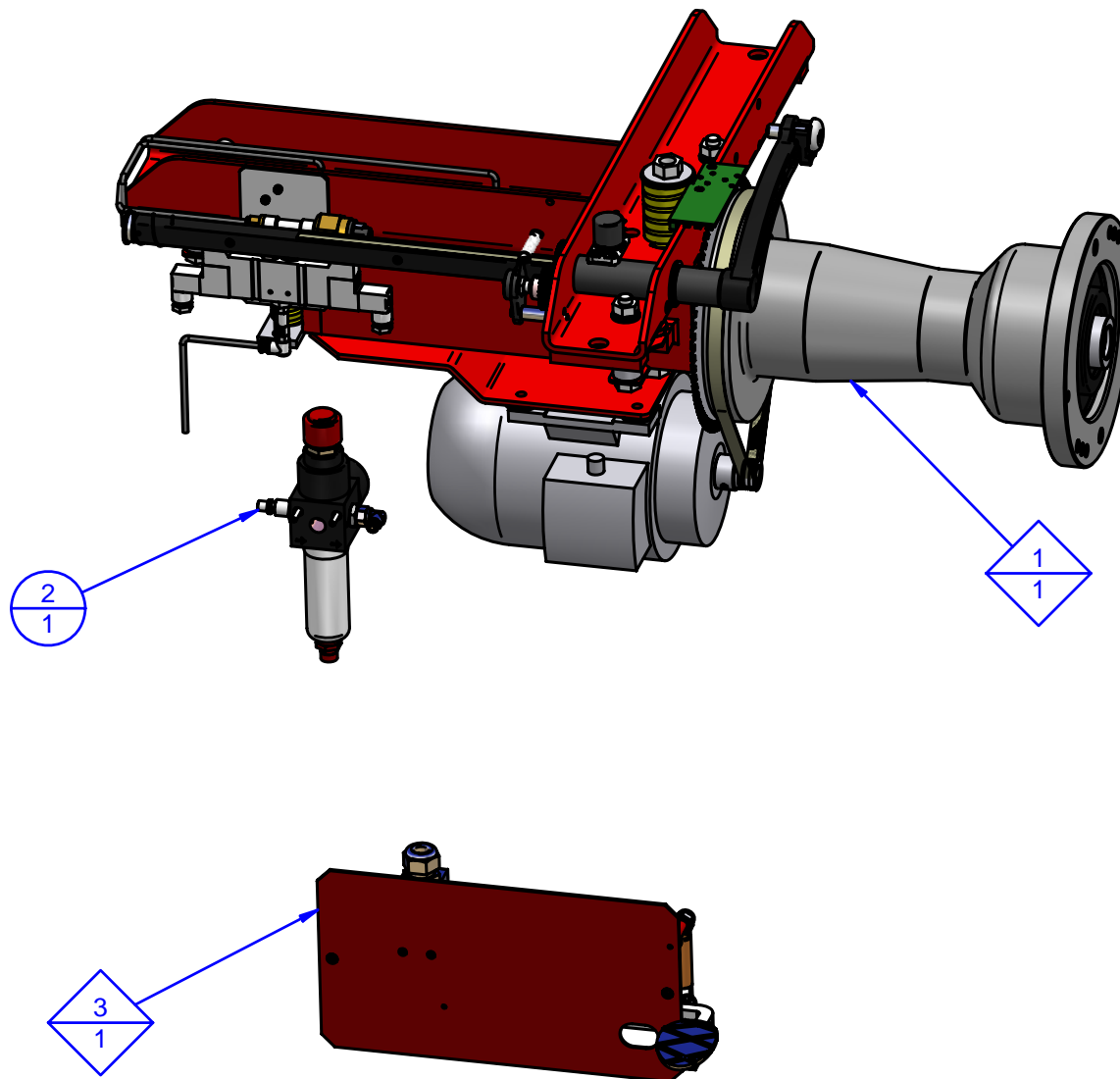
POS	RSP	Codice (Code)	Descrizione	Description	Q.tà (Q.ty)
1		2M0715.40	Cono ø40 70/98 (Grande)	Large Cone	1
2		2M0716.40	Cono ø40 54/81 (Medio)	Medium Cone	1
3		2M0717.40	Cono ø40 42/62 (Piccolo)	Small Cone	1
4		2M2144.40	Albero Filettato ø40x3 L=210	Shaft	1
5		3M1106.40	Volantino Blocc. Rapido ø40x3 Standard	Quick Lock	1
6		3M156	Calibro di misura	Width gauge	1
7		4M1015	Peso x Taratura	Calibration weight	1
8		9M1343	Pinza x Piombi	Weight pliers	1
9		9M1345	Tassello di fissaggio	Bolts for tightening to the ground	4
10		9M2376	Chiave aperta di 27 (a una bocca)	Hex-key to lock shaft	1
11		9M2502	Campana per Bloccaggio Rapido (Haweka)	Clamping Hood	1
12		9M2503	Anello per Bloccaggio Rapido (Haweka)	Pressure Ring	1
13		9M2504	Anello in gomma per Bloccaggio Rapido (Haweka)	Rubbercap	1
14		9M2523-1.40	Bloccaggio Rapido ø40x3	Quick Lock	1




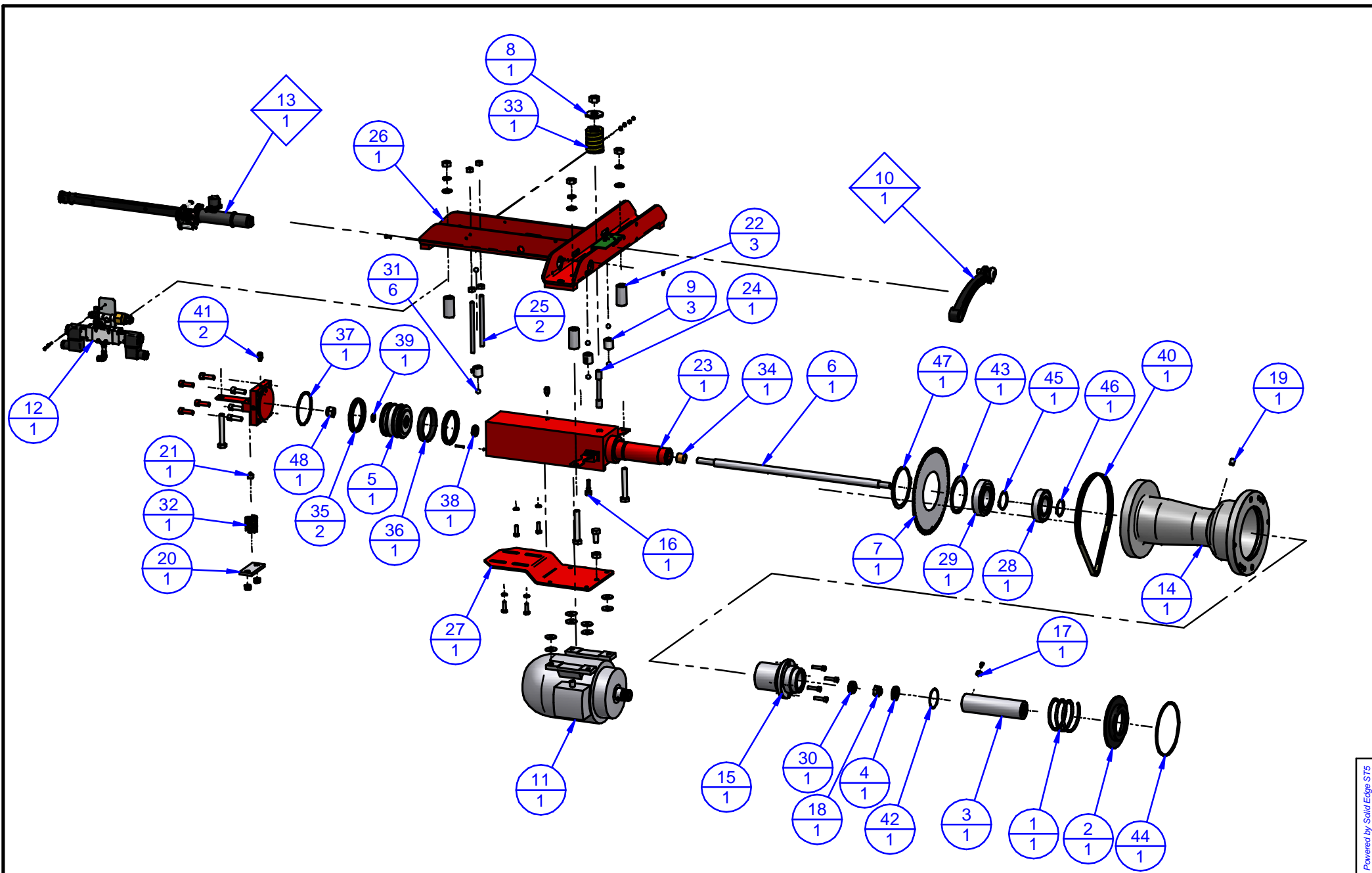
Legenda: <div style="display: flex; align-items: center;"> <div style="border: 1px solid black; border-radius: 50%; width: 20px; height: 20px; display: flex; align-items: center; justify-content: center; margin-right: 5px;"> <div style="border-top: 1px solid black; width: 10px; height: 10px; margin-bottom: 2px;"></div> <div style="border-top: 1px solid black; width: 10px; height: 10px; margin-bottom: 2px;"></div> </div> <div> <div>Ref. number</div> <div>Q.ty</div> </div> </div> <div style="display: flex; align-items: center; margin-top: 5px;"> <div style="border: 1px solid black; width: 15px; height: 15px; transform: rotate(45deg); margin-right: 5px;"></div> <div>Sub-table exists</div> </div>	Codice (Code): <div style="font-size: 1.2em; font-weight: bold;">3M188-yy.40</div>	Descrizione / Description: Dotazione Standard ø40 Equilibr. No Carter Standard Accessories ø40 for all off-the-car wheel balancers	Rev: R0 Data (Date): 27/01/11	<div style="text-align: right;">  </div> <div style="font-size: 0.8em;"> FASEP 2000 s.r.l. Ronta - Firenze - Italy </div>
---	--	---	--	---


POS	RSP	Codice (Code)	Descrizione	Description	Q.tà (Q.ty)
1		2M0715.40	Cono ø40 70/98 (Grande)	Large Cone	1
2		2M0716.40	Cono ø40 54/81 (Medio)	Medium Cone	1
3		2M0717.40	Cono ø40 42/62 (Piccolo)	Small Cone	1
4		2M2144.40	Albero Filettato ø40x3 L=210	Shaft	1
5		3M1106-3.40	Volantino Blocc. Rap. ø40x3 con Volante	Quick Lock with Steer kit	1
6		3M156	Calibro di misura	Width gauge	1
7		4M1015	Peso x Taratura	Calibration weight	1
8		9M1343	Pinza x Piombi	Weight pliers	1
9		9M1345	Tassello di fissaggio	Bolts for tightening to the ground	4
10		9M2376	Chiave aperta di 27 (a una bocca)	Hex-key to lock shaft	1
11		9M2502-2	Campana per Bloccaggio Rapido (Femas)	Clamping Hood	1
12		9M2503-1	Anello x bloccaggio Rapido (Femas)	Spacer Cap	1
13		9M2504-1	Anello in gomma per Bloccaggio Rapido (Femas)	Rubbercap	1
14		9M2523-2.40	Bloccaggio Rapido ø40x3 con Volante	Quick Lock with steer	1

POS	RSP	Codice (Code)	Descrizione	Description	Q.tà (Q.ty)
1		3M802	Gruppo oscillante G3.PL (3Ph)	Motor Assy G3.PL	1
2		3M2938	Kit Aria PL2	PL2 Air Kit	1
3		3M2289	Gruppo Pedale PL	PL Pedal assy	1



Legenda:		Codice (Code):	Descrizione / Description:	Rev:	Data (Date):	 FASEP 2000 s.r.l. Ronta - Firenze - Italy
<div><div>2</div><div>1</div></div> <div>Ref. number Q.ty</div>	<div><div></div><div></div></div> <div>Sub-table exists</div>	/	Kit G3.PL Equil. 16bit Pneo-Lock Group	R0	15/11/11	



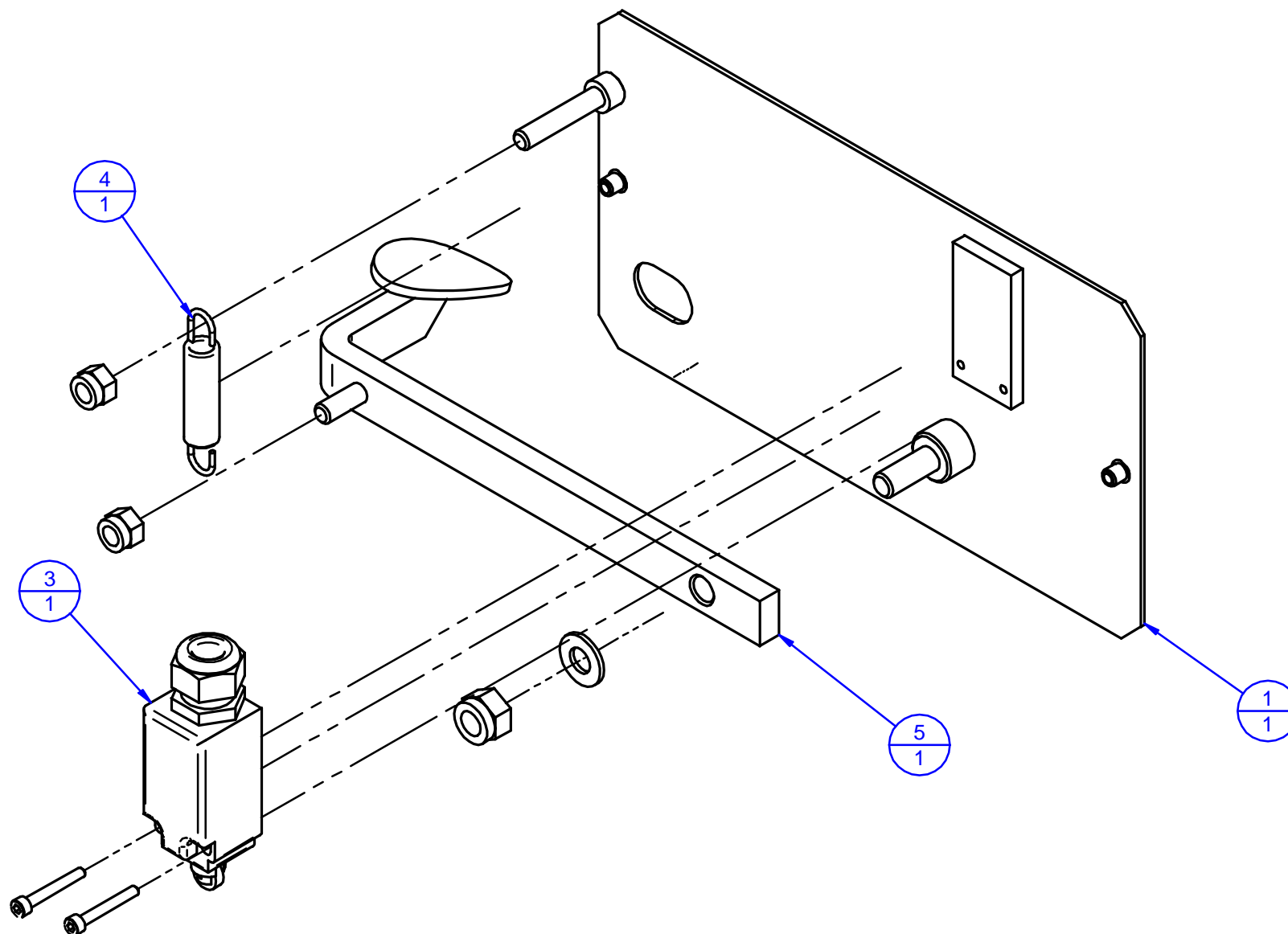
Legenda: <div style="display: flex; align-items: center;"> <div style="border: 1px solid black; border-radius: 50%; padding: 2px; margin-right: 5px;">2 1</div> <div style="margin-right: 5px;">Ref. number</div> </div> <div style="display: flex; align-items: center;"> <div style="border: 1px solid black; width: 10px; height: 10px; margin-right: 5px;"></div> <div>Sub-table exists</div> </div>	Codice (Code): <div style="font-size: 24pt; font-weight: bold;">3M802</div>	Descrizione / Description: Gruppo oscillante G3.PL (3Ph) Motor Assy G3.PL	Rev: R1 Data (Date): 03/03/14	<div style="text-align: right;">  FASEP 2000 s.r.l. Ronta - Firenze - Italy </div>
--	---	--	--	---

POS	RSP	Codice (Code)	Descrizione	Description	Q.tà (Q.ty)
1		2M1849	Molla a compressione ø67x110x4.5	Spring	1
2		2M2141	Disco premi-molla	Disk	1
3		2M2142.40	Perno oscillante ø40	Pin	1
4		2M2145	Ghiera per perno	Ring Nut	1
5		2M2165-2	Porta guarnizione ø75 Plus	Piston	1
6		2M2166	Stelo pistone	Piston Rod	1
7		2M2256	Disco ricerca ø194x64T	Position disk	1
8		2M2264	Scodellino per molla G40	Flange	1
9	x	3EV556	Sensore PIEZOXID MATROC 2007	Piezo Sensor	3
10		3M2573-2	Braccetto tastatore mobile completo	ALU-S Distance measuring rod	1
11		3M3609-1	Motore 230/400 3Ph + Puleggia	Motor + Pulley	1
12		3M3633-1	SET ELETTROVALV.12Vcc API Pneum GR.PL2	valve	1
13		3M739	Gruppo misura ALU-SE (corsa lunga)	ALU-SE Measuring System Assy	1
14		4M2162P	Manicotto-Campana PL	Bell	1
15		4M2163.40	Camicia per perno PL ø40	Casing	1
16		4M2389	Vite guida stelo x PL	Screw	1
17		4M2390	Chiavetta 8x12 x PL	Key	1
18		4M2391	Dado Autobl. M12x1.25 Spianato x PL	Nut	1
19		4M2392	Grano M10x12 SP forato	Special Grub screw	1
20		4M2813	Traversino	Support	1
21		4M2857	Boccolo richiamo x molla	Pin	1
22		4M2911	Distanziale	Spacer	3
23		4M2912	Albero centrale PL per Gruppo Ribal.	PL Shaft	1
24		4M3020	Tirante sfinato per PL	Pool	1
25		4M3021	Barra filettata M8x120	Stud	2
26		4M3030	Controtelaio x gruppo PL2	Support	1
27		4M3843	Supporto motore G3.PL	Motor Support	1
28		9C0025-1	CUSCINETTO Radiale 6207 ZZ-SKF	Ball Bearing	1
29		9C0026-1	CUSCINETTO Radiale 6208 ZZ-SKF	Ball Bearing	1
30		9C0027	Cuscinetto reggisplinta 51101	Trust Block	1
31		9C1016	Sfera 3/8"	Ball	6
32		9M1204	Molla G26x32	Spring	1
33		9M2263	Molla G40x51	Spring	1
34		9M2313	Boccola ø16x20x16L autolubrificante	Bush	1

POS	RSP	Codice (Code)	Descrizione	Description	Q.tà (Q.ty)
35		9M2315-1	Guarnizione ø75 tenuta pistone	Gaskets	2
36		9M2316-1	Anello guida E/DWR 75	Pilot Ring	1
37		9M2317-1	Guarnizione OR 171	O-Ring	1
38		9M2318	Guarnizione tenuta stelo DIM16-24	Gaskets	1
39		9M2555	Guarnizione OR 115	O-Ring	1
40	x	9M2839-1	Cinghia TB2 630 6 Nerv.	Belt	1
41		9M2965	Raccordo diritto 50020 M5-4	Union	2
42		9M3618	Guarnizione OR 2162	O-Ring	1
43		9V093013	ANELLO DI ARRESTO Ø80 I	Seeger Ring	1
44		9V093042	Seeger ø118I senza becchi	Seeger Ring	1
45		9V094014	ANELLO DI ARRESTO Ø40 E	Seeger Ring	1
46		9V094047	ANELLO DI ARRESTO Ø35 E	Seeger Ring	1
47		9V094048	ANELLO DI ARRESTO Ø88 E	Seeger Ring	1
48		9V700040	Dado autobloccante M12x1.25	Nut	1

POS	RSP	Codice (Code)	Descrizione	Description	Q.tà (Q.ty)
1		2M1849	Molla a compressione ø67x110x4.5	Spring	1
2		2M2141	Disco premi-molla	Disk	1
3		2M2142.40	Perno oscillante ø40	Pin	1
4		2M2145	Ghiera per perno	Ring Nut	1
5		2M2165-1	Porta guarnizioni	Piston	1
6		2M2166	Stelo pistone	Piston Rod	1
7		2M2256	Disco ricerca ø194x64T	Position disk	1
8		2M2264	Scodellino per molla G40	Flange	1
9	x	3EV556	Sensore PIEZOXID MATROC 2007	Piezo Sensor	3
10		3M2573-2	Braccetto tastatore mobile completo	ALU-S Distance measuring rod	1
11		3M3113	Gruppo Elettrovalvola x PL2	Electrovalve	1
12		3M3609-1	Motore 230/400 3Ph + Puleggia	Motor + Pulley	1
13		3M739	Gruppo misura ALU-SE (corsa lunga)	ALU-SE Measuring System Assy	1
14		4M2162P	Manicotto-Campana PL	Bell	1
15		4M2163.40	Camicia per perno PL ø40	Casing	1
16		4M2389	Vite guida stelo x PL	Screw	1
17		4M2390	Chiavetta 8x12 x PL	Key	1
18		4M2391	Dado Autobl. M12x1.25 Spianato x PL	Nut	1
19		4M2392	Grano M10x12 SP forato	Special Grub screw	1
20		4M2813	Traversino	Support	1
21		4M2857	Boccolo richiamo x molla	Pin	1
22		4M2911	Distanziale	Spacer	3
23		4M2912	Albero centrale PL per Gruppo Ribal.	PL Shaft	1
24		4M3020	Tirante sfinato per PL	Pool	1
25		4M3021	Barra filettata M8x120	Stud	2
26		4M3030	Controtelaio x gruppo PL2	Support	1
27		4M3843	Supporto motore G3.PL	Motor Support	1
28		9C0025-1	CUSCINETTO Radiale 6207 ZZ-SKF	Ball Bearing	1
29		9C0026-1	CUSCINETTO Radiale 6208 ZZ-SKF	Ball Bearing	1
30		9C0027	Cuscinetto reggispira 51101	Trust Block	1
31		9C1016	Sfera 3/8"	Ball	6
32		9M1204	Molla G26x32	Spring	1
33		9M2263	Molla G40x51	Spring	1

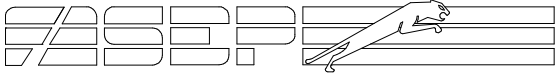
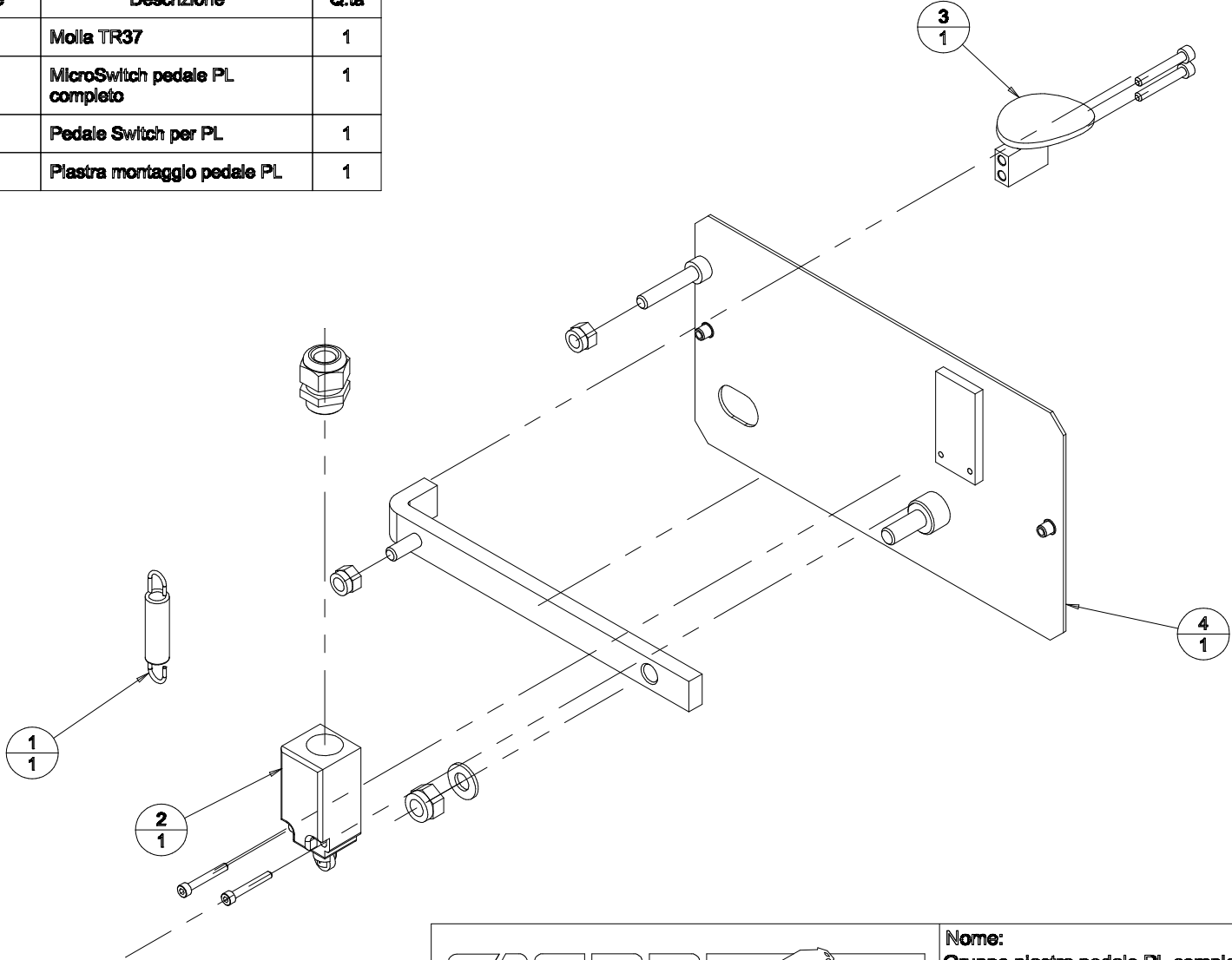
POS	RSP	Codice (Code)	Descrizione	Description	Q.tà (Q.ty)
34		9M2313	Boccola ø16x20x16L autolubrificante	Bush	1
35		9M2315-1	Guarnizione ø75 tenuta pistone	Gaskets	2
36		9M2316-1	Anello guida E/DWR 75	Pilot Ring	1
37		9M2317-1	Guarnizione OR 171	O-Ring	1
38		9M2318	Guarnizione tenuta stelo DIM16-24	Gaskets	1
39		9M2555	Guarnizione OR 115	O-Ring	1
40	x	9M2839-1	Cinghia TB2 630 6 Nerv.	Belt	1
41		9M2965	Raccordo diritto 50020 M5-4	Union	2
42		9M3618	Guarnizione OR 2162	O-Ring	1
43		9V093013	ANELLO DI ARRESTO Ø80 I	Seeger Ring	1
44		9V093042	Seeger ø118I senza becchi	Seeger Ring	1
45		9V094014	ANELLO DI ARRESTO Ø40 E	Seeger Ring	1
46		9V094047	ANELLO DI ARRESTO Ø35 E	Seeger Ring	1
47		9V094048	ANELLO DI ARRESTO Ø88 E	Seeger Ring	1
48		9V700040	Dado autobloccante M12x1.25	Nut	1



<p>Legenda:</p> <div style="display: flex; align-items: center;"> <div style="margin-right: 10px;"> <p>2 1</p> </div> <div> <p>Ref. number</p> <p>Q.ty</p> </div> </div> <div style="display: flex; align-items: center; margin-top: 10px;"> <div style="margin-right: 10px;"> <p>◊</p> </div> <p>Sub-table exists</p> </div>	<p>Codice (Code):</p> <p>3M2289</p>	<p>Descrizione / Description:</p> <p>Gruppo Pedale PL PL Pedal assy</p>	<p>Rev:</p> <p>R1</p>	<p>Data (Date):</p> <p>23/11/06</p>	<div style="display: flex; align-items: center;"> <div style="margin-right: 10px;"> <p>FASEP</p> <p>FASEP 2000 s.r.l.</p> </div> <div> <p>Ronta - Firenze - Italy</p> </div> </div>
---	--	---	-----------------------	-------------------------------------	--

POS	RSP	Codice (Code)	Descrizione	Description	Q.tà (Q.ty)
1		4M2289	Piastra montaggio pedale PL	Holder	1
3		3M0846-1	MicroSwitch pedale PL completo	Switch	1
4		9M0083	Molla TR37	Spring	1
5		4M2280-1	Pedale switch PL	Pneolock Pedal	1

Rif.	Codice	Descrizione	Q.tà
1	9M0083	Molla TR37	1
2	3M0846-1	MicroSwitch pedale PL completo	1
3	3M2289	Pedale Switch per PL	1
4	4M2289	Plastra montaggio pedale PL	1



Nome:
Gruppo piastra pedale PL completa

Cod. 3M2289

Rev: R0 Data: 27/08/2003