

PARTI DI RICAMBIO

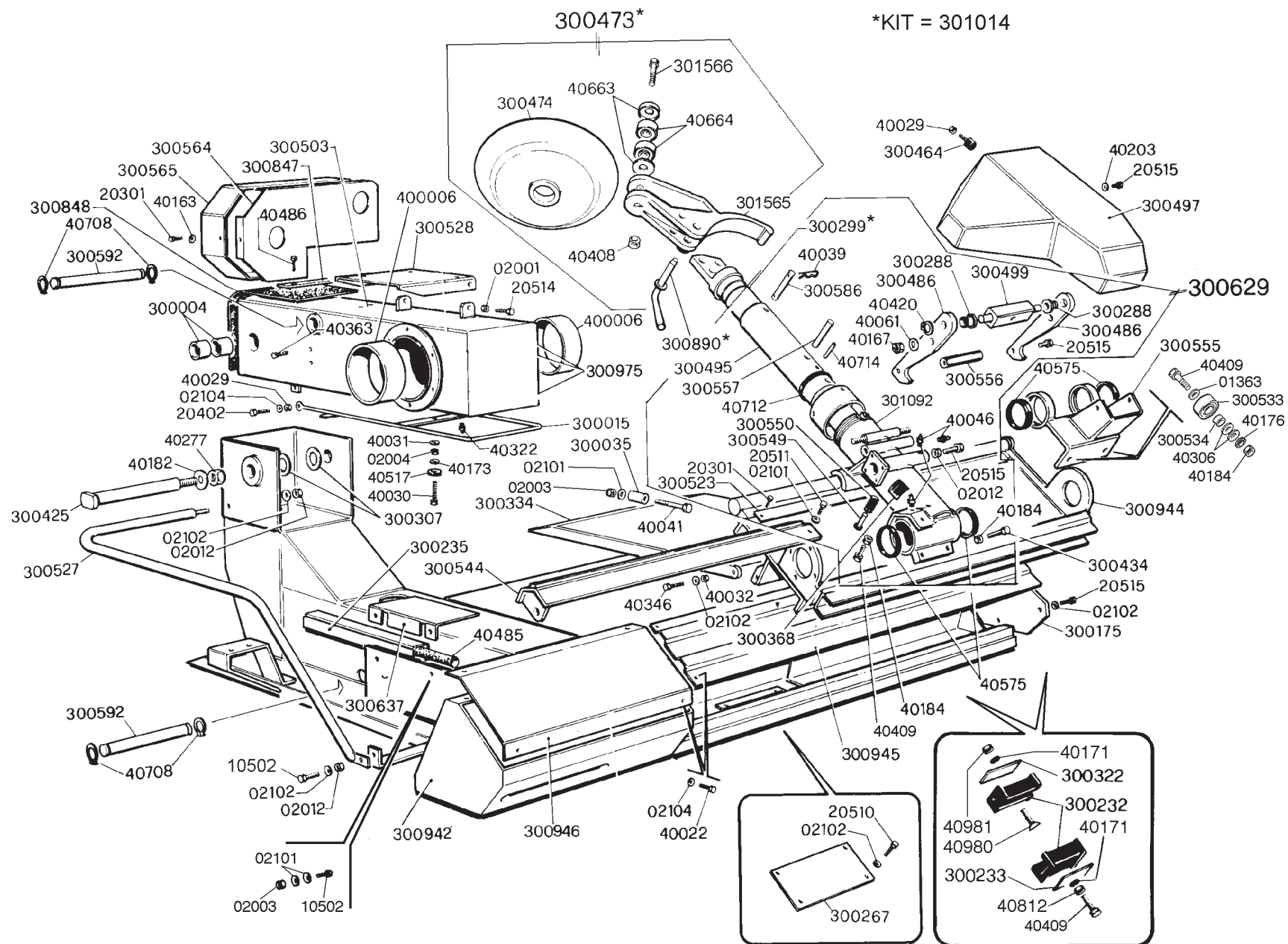
SPARE PARTS
PIÈCES DE RECHANGE
ERSATZTEILEN
REPUESTOS
PEÇAS DE RECÂMBIO
RESERVDELAR
ЗАПАСНЫЕ ЧАСТИ

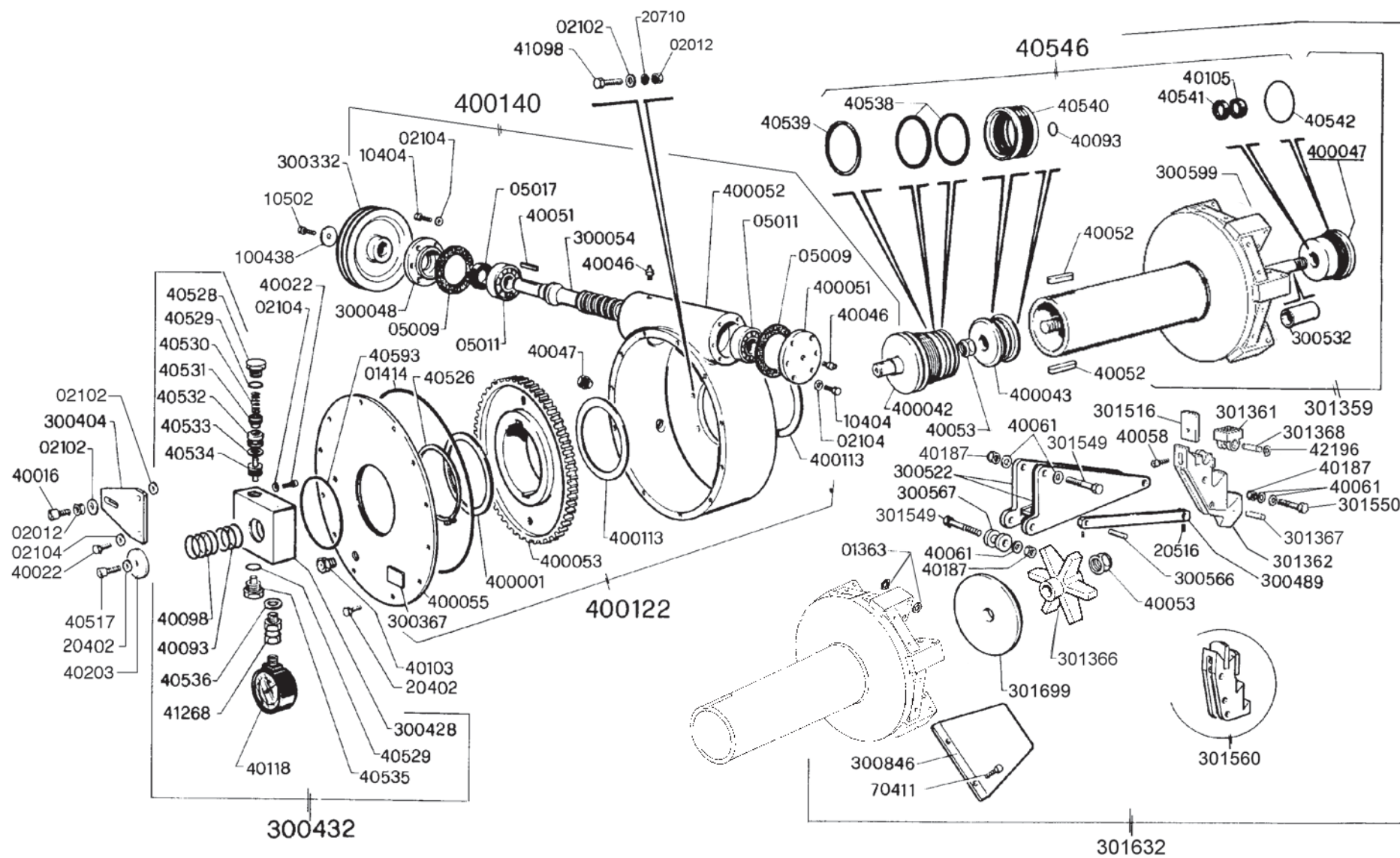
SMONTAGOMME

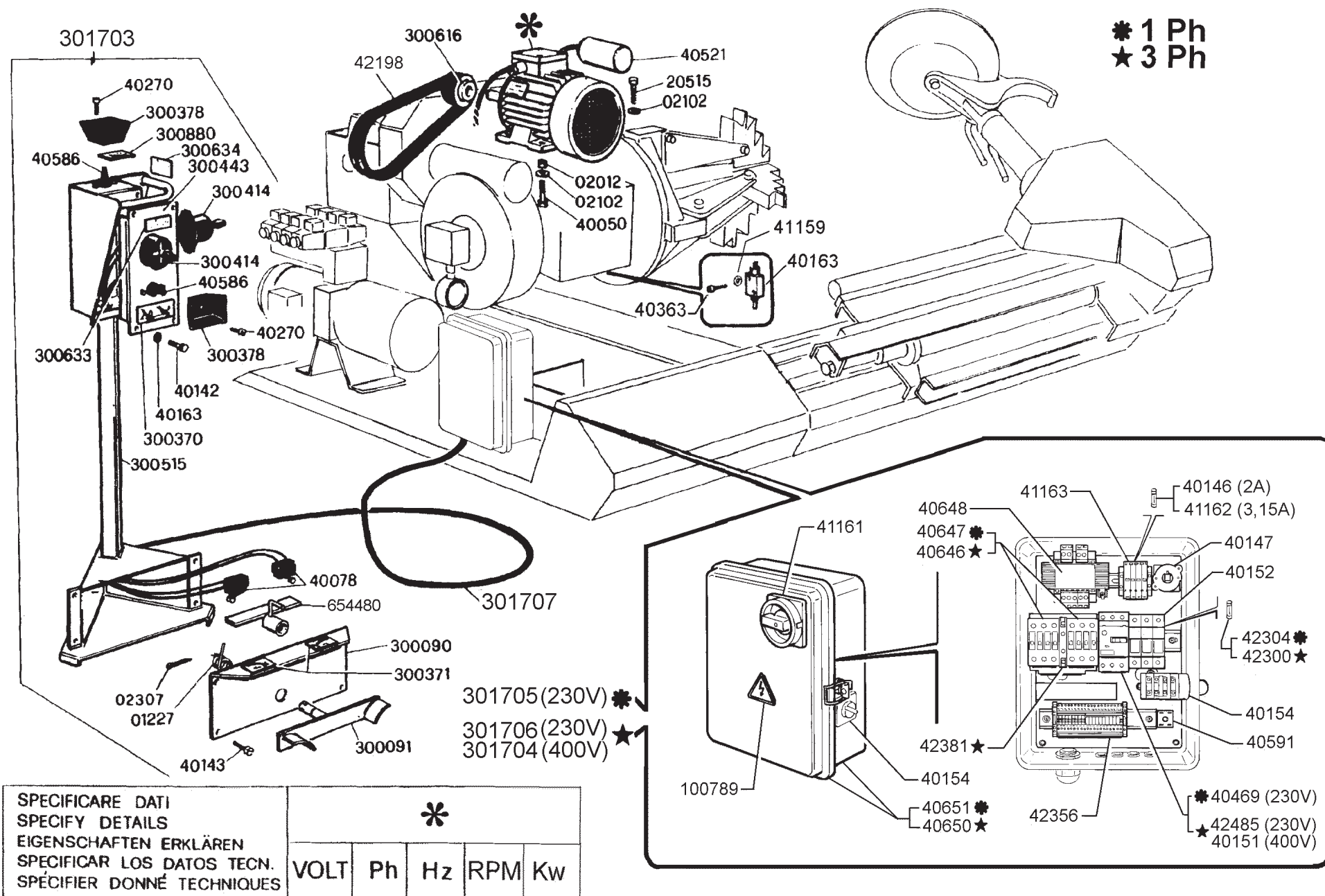
TYRE CHANGING MACHINE
DÉMONTE PNEUS
REIFENWECHSLER
DESMONTA-NEUMATICOS
DESMONTA-PNEUS
DÄCKMONTERINGSMASKIN
ШИНОМОНТАЖНЫЙ СТАНОК

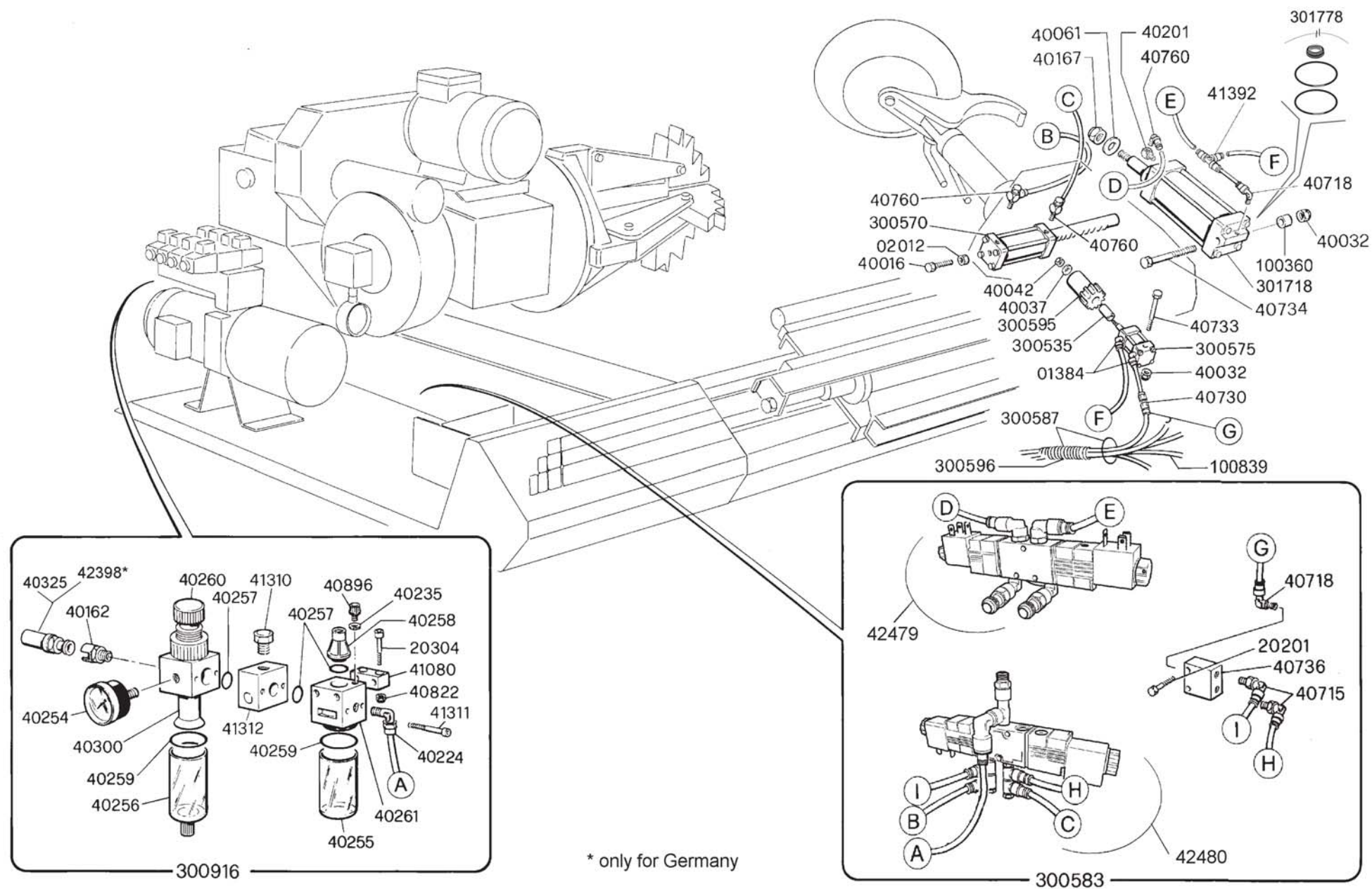
JUMBOTCS 56

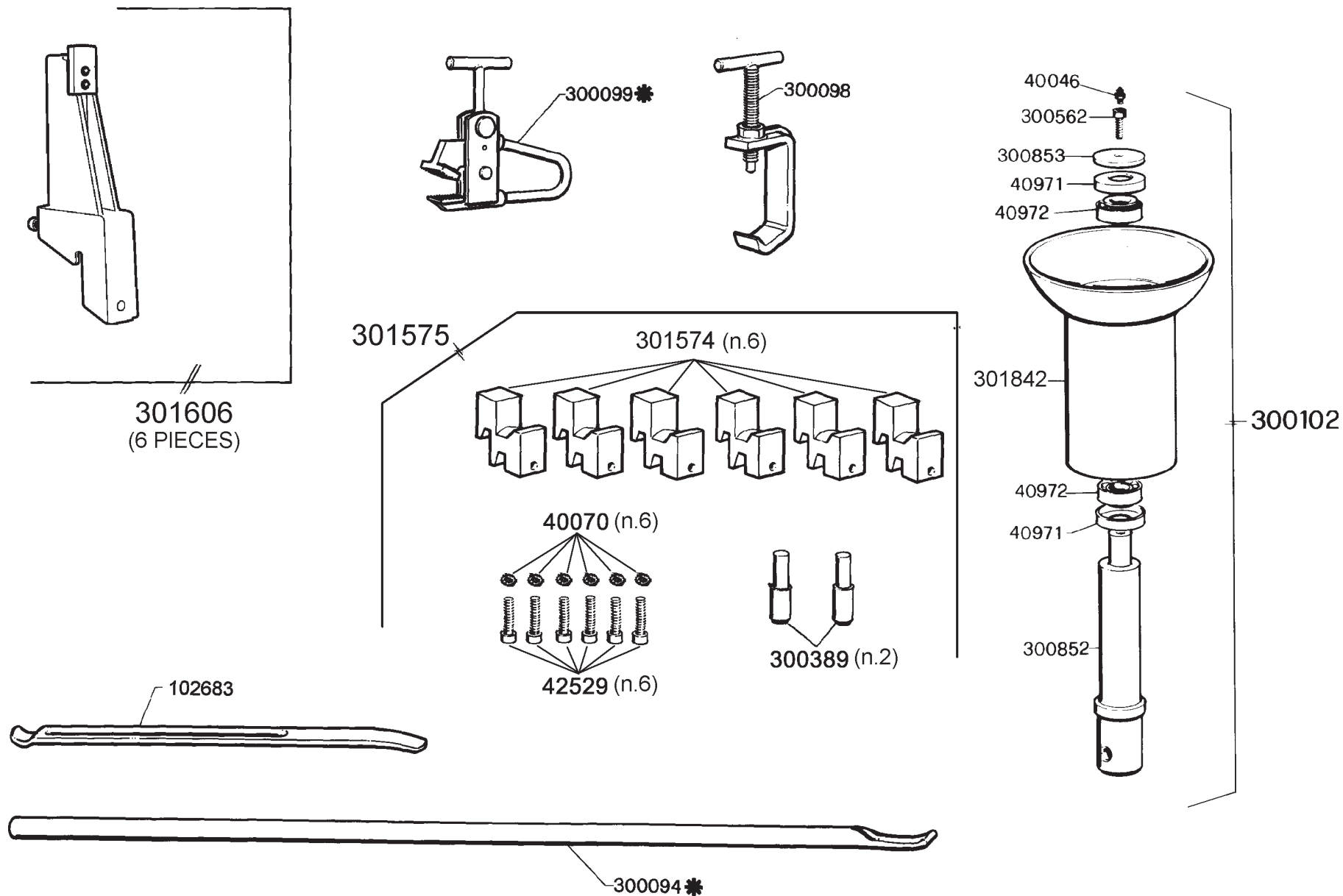
N° 300988 REV. 6
N° 301055 REV. 8
N° 301907 REV. 0
N° 300901 REV. 5
N° 300902 REV. 6
N° 301920 REV. 0
N° 300911 REV. 0
N° 300912 REV. 0
N° 300582-01 REV. 1
N° 300582-02 REV. 1
N° 300582-03 REV. 1
N° 300582-04 REV. 1
N° 300582-05 REV. 1
N° 300582-06 REV. 1
N° 300582-07 REV. 1
N° 300582-08 REV. 1
N° 300563-01 REV. 1
N° 300563-02 REV. 1
N° 300563-03 REV. 1
N° 300563-04 REV. 1
N° 300563-05 REV. 1
N° 300563-06 REV. 1
N° 300563-07 REV. 1
N° 300563-08 REV. 1



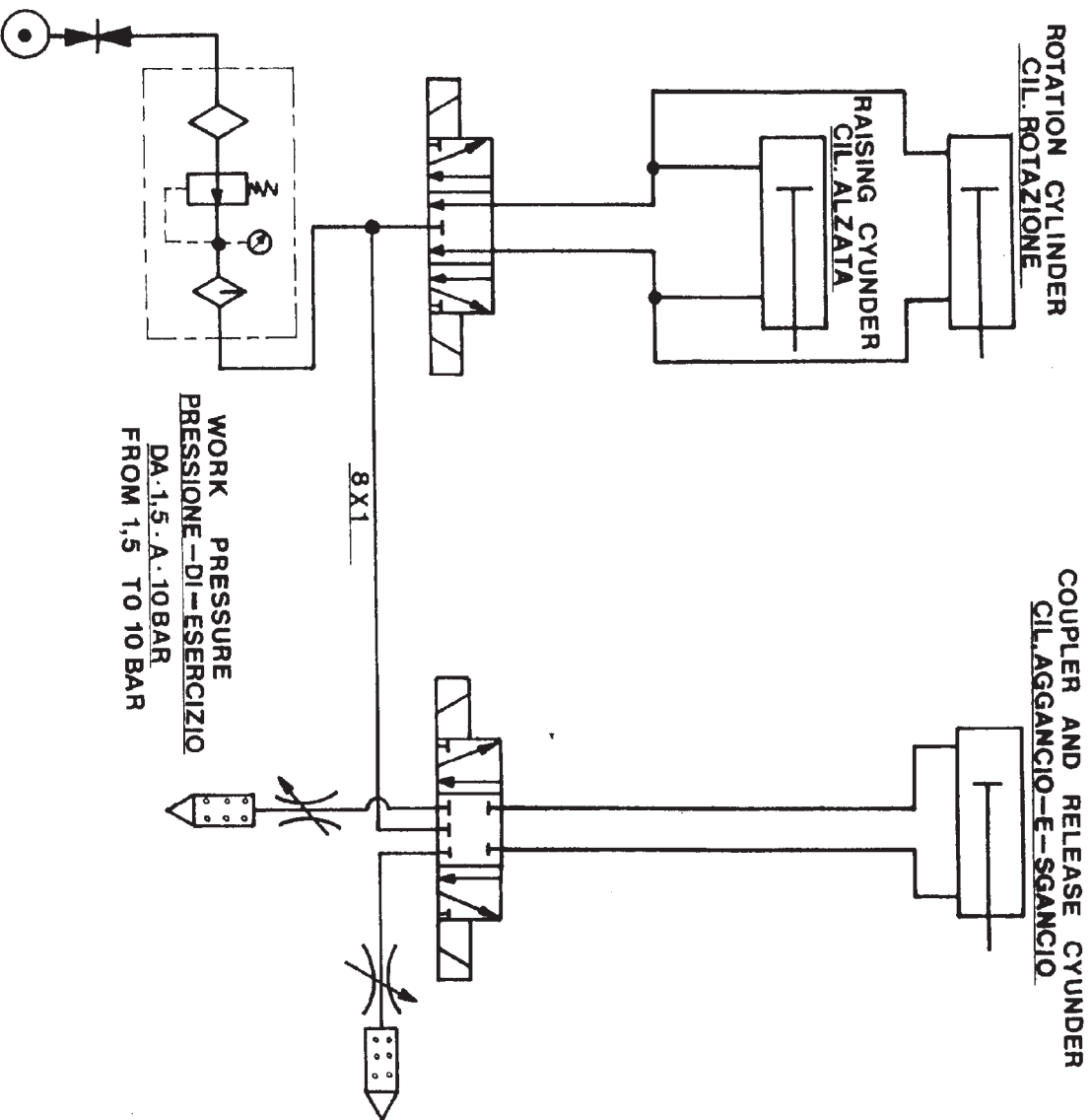






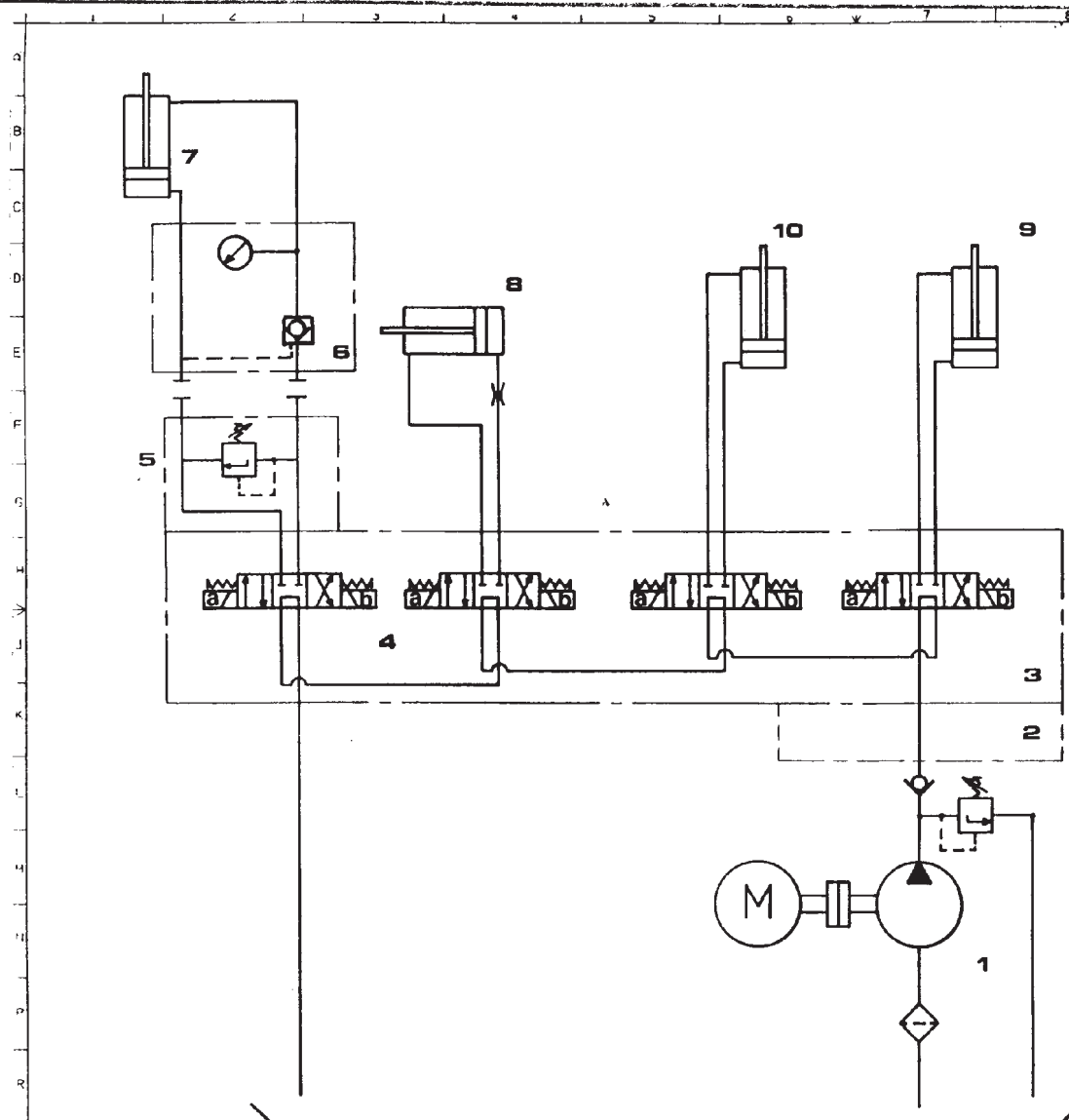


STANDARD




ARM'S PNEUMATIC PLAN

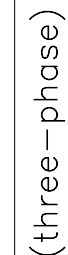
[illegible]

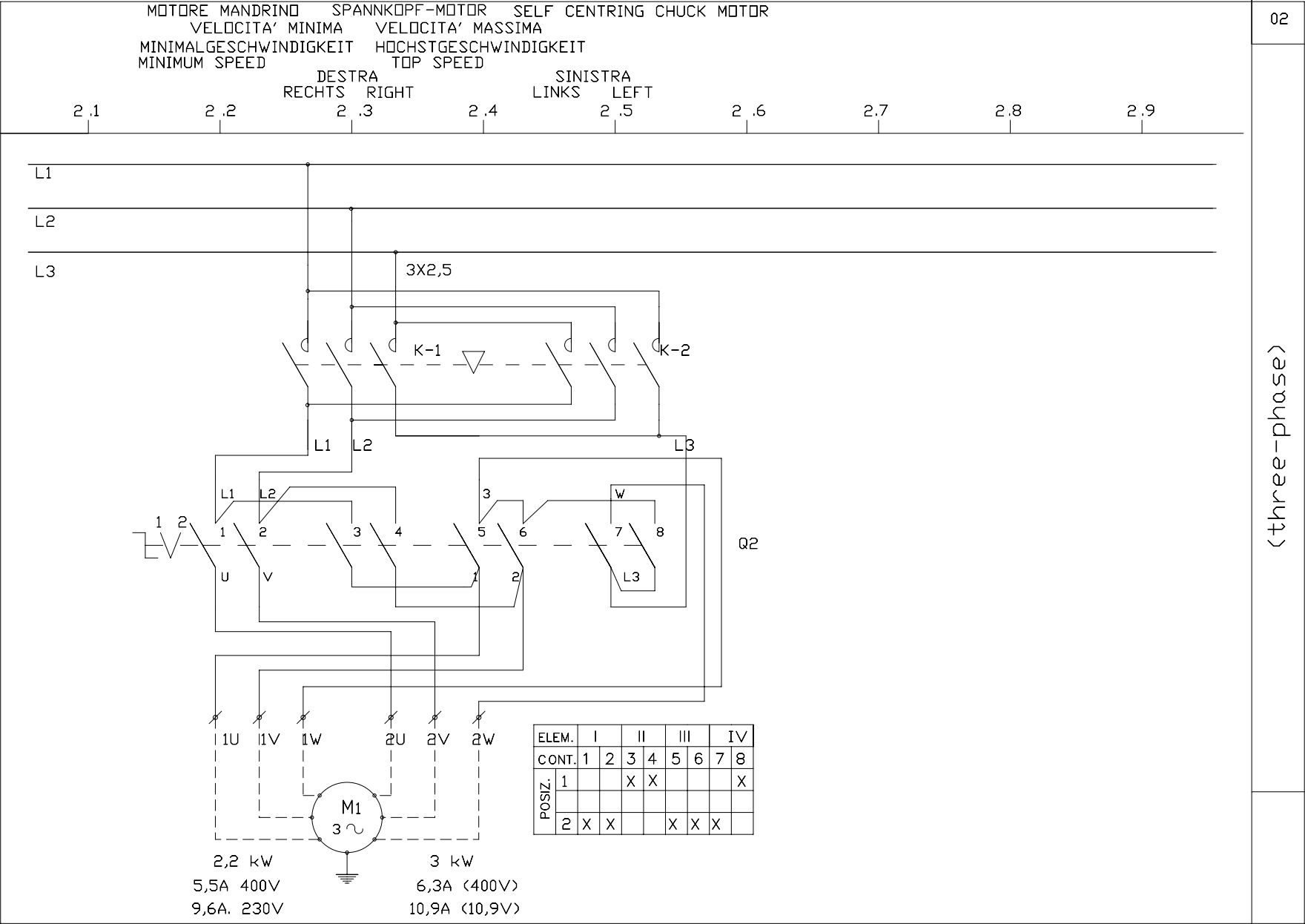


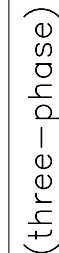
10	Cilindro mov.braccio	1	Vario	
9	Cilindro mov.carro	1	Vario	
8	Cilindro mov.testa	1	"	
7	Cilindro mov.pinza	1	"	
6	Collattore SICAM	1	Fe37	V99020000
5	CPS100 Cart.Reg.Pres.	1	Vario	V70281600
4	AE06206 24VDC Elett.	4	"	V11560300
3	Base multipla spec.	1	Ghisa G25	M10700075
2	Blocchetto speciale	1	"	M10700074
1	MC4-V2B-PN-MN-T06-FI	1	Vario	V77070000
N.D.	DENOMINAZIONE	N.Z.	MATERIALE	CODICE

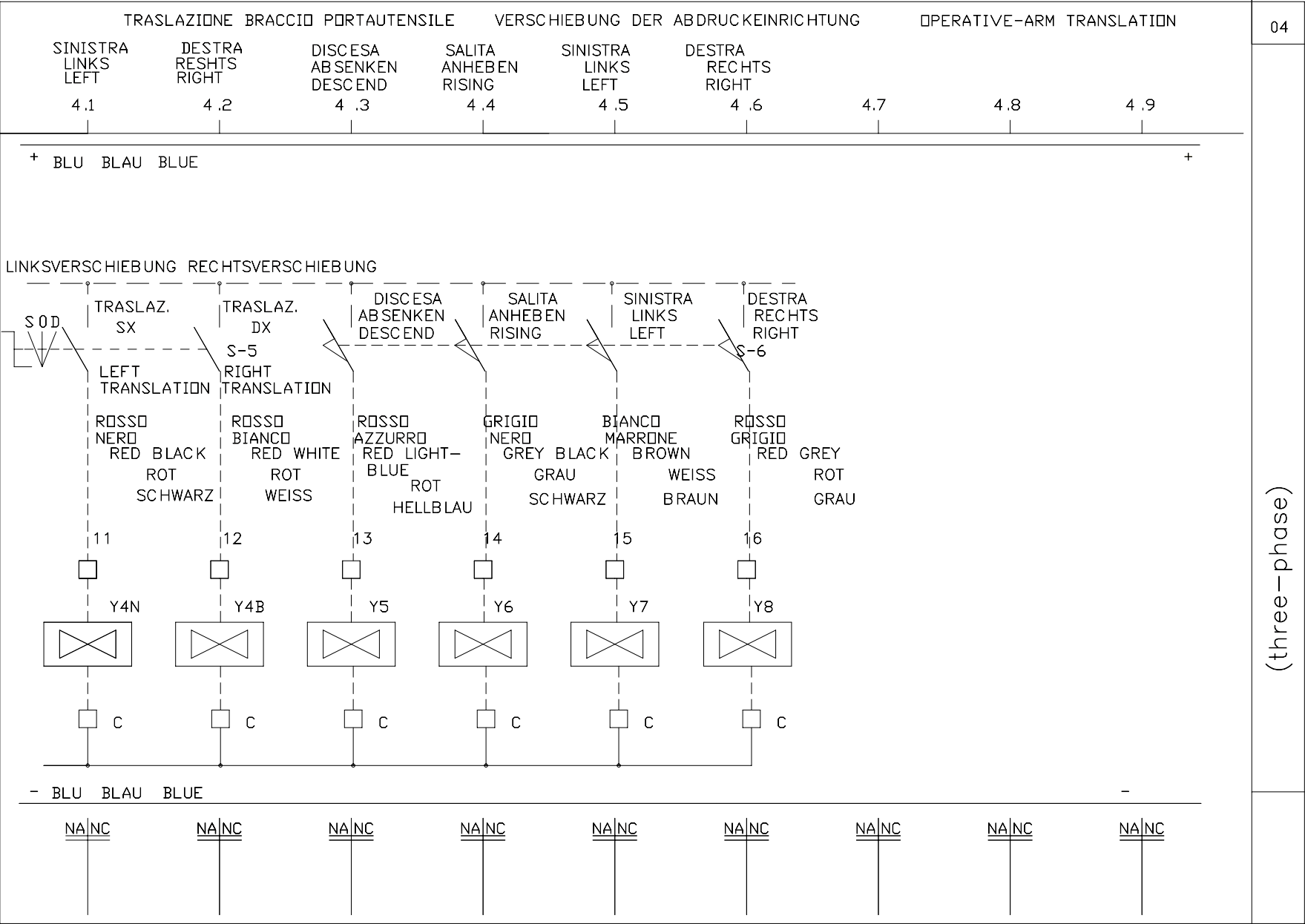
POS. N°	Disegno N°	Denominazione			N° Pez.
Denominazione SCHEMA-OLEODINAMICO				Materiale	
CENTRALINA UP/HY4					
Kg. lav.	Pag. lav. N°	Gruppo	N.P.	Macchine	N.P.
		CENTRALINA			
Scala	Data	24-VOLT			1
	28-1-88				1
Dis. 	Cont.				

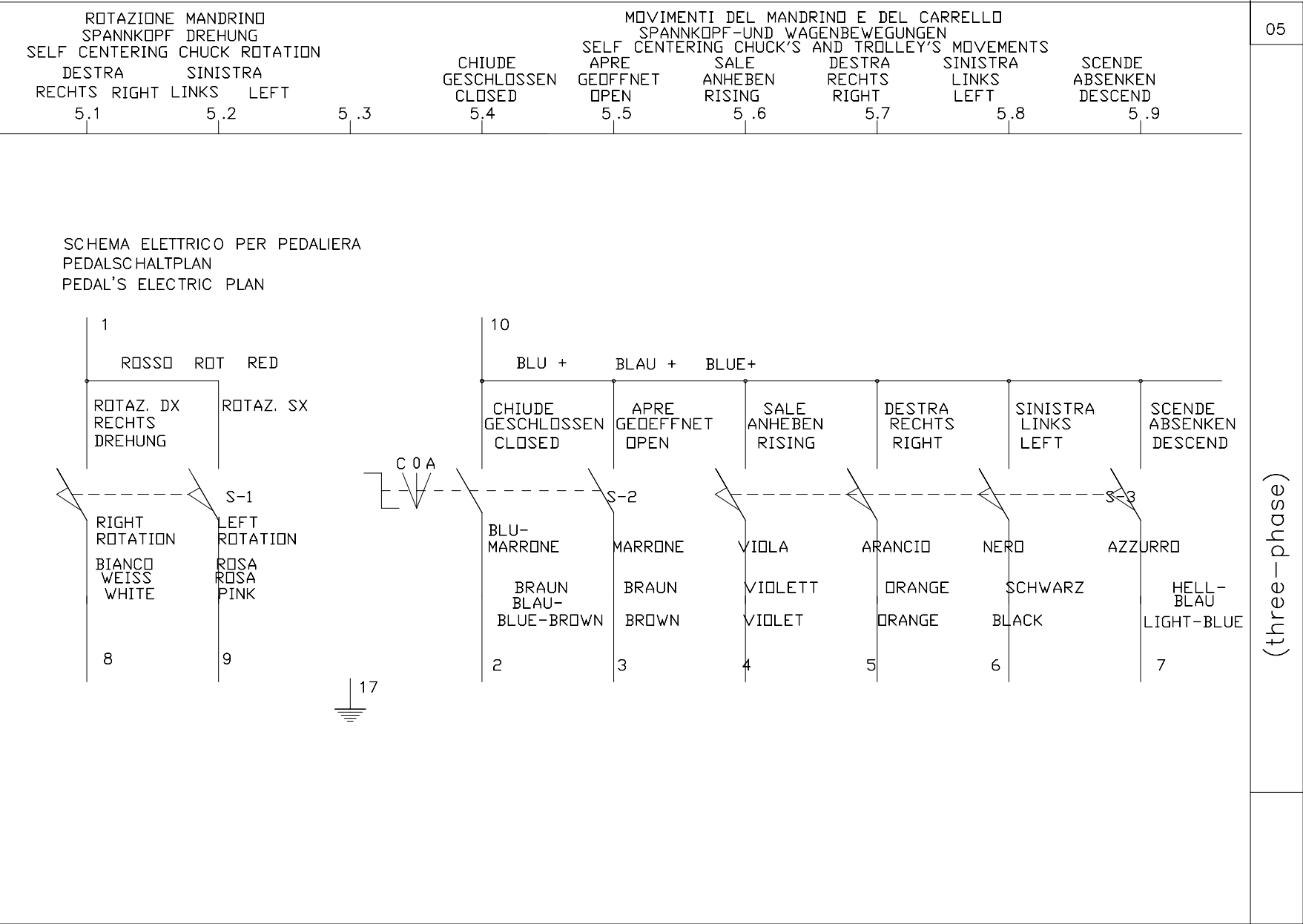
Dis. 300912







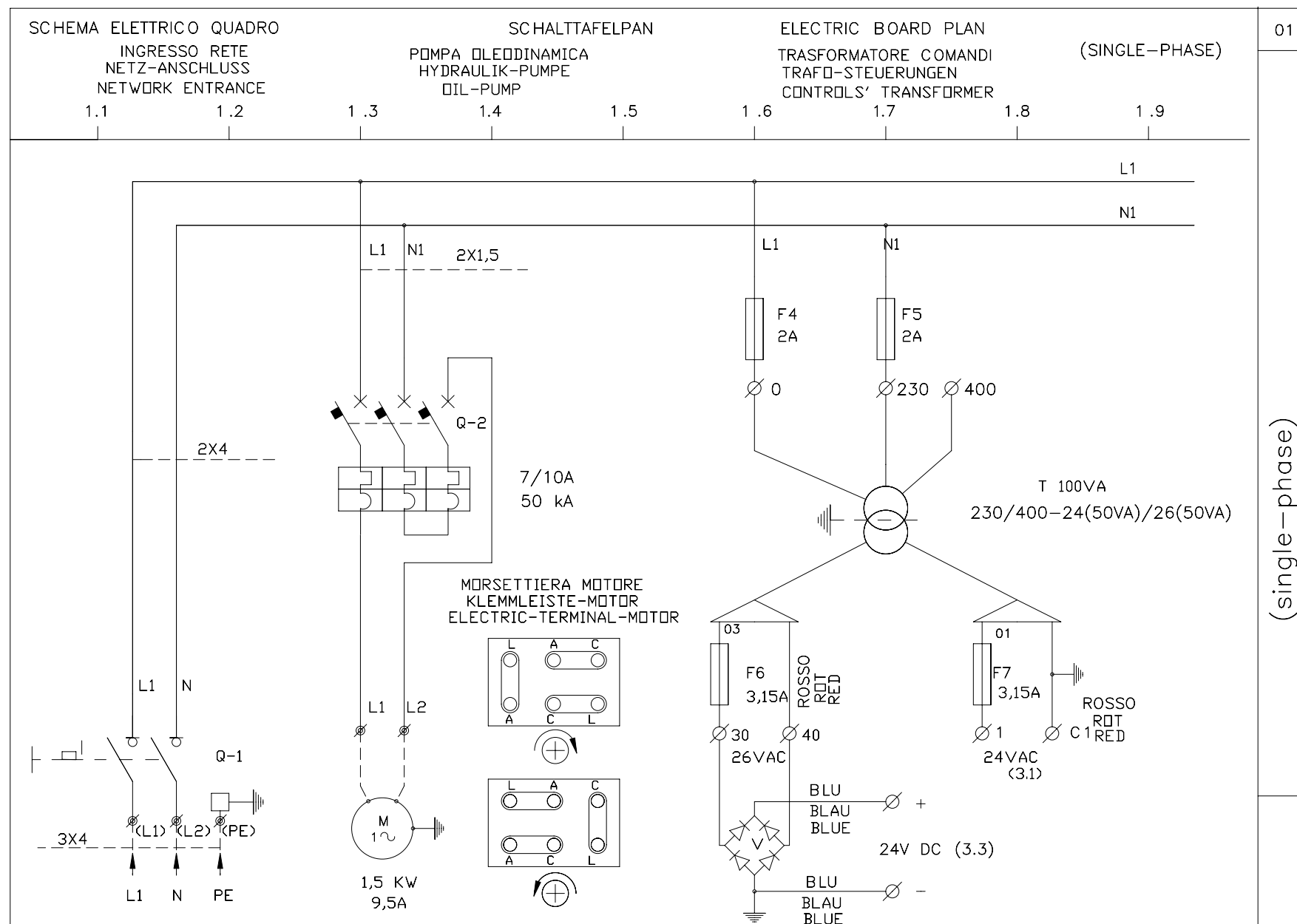


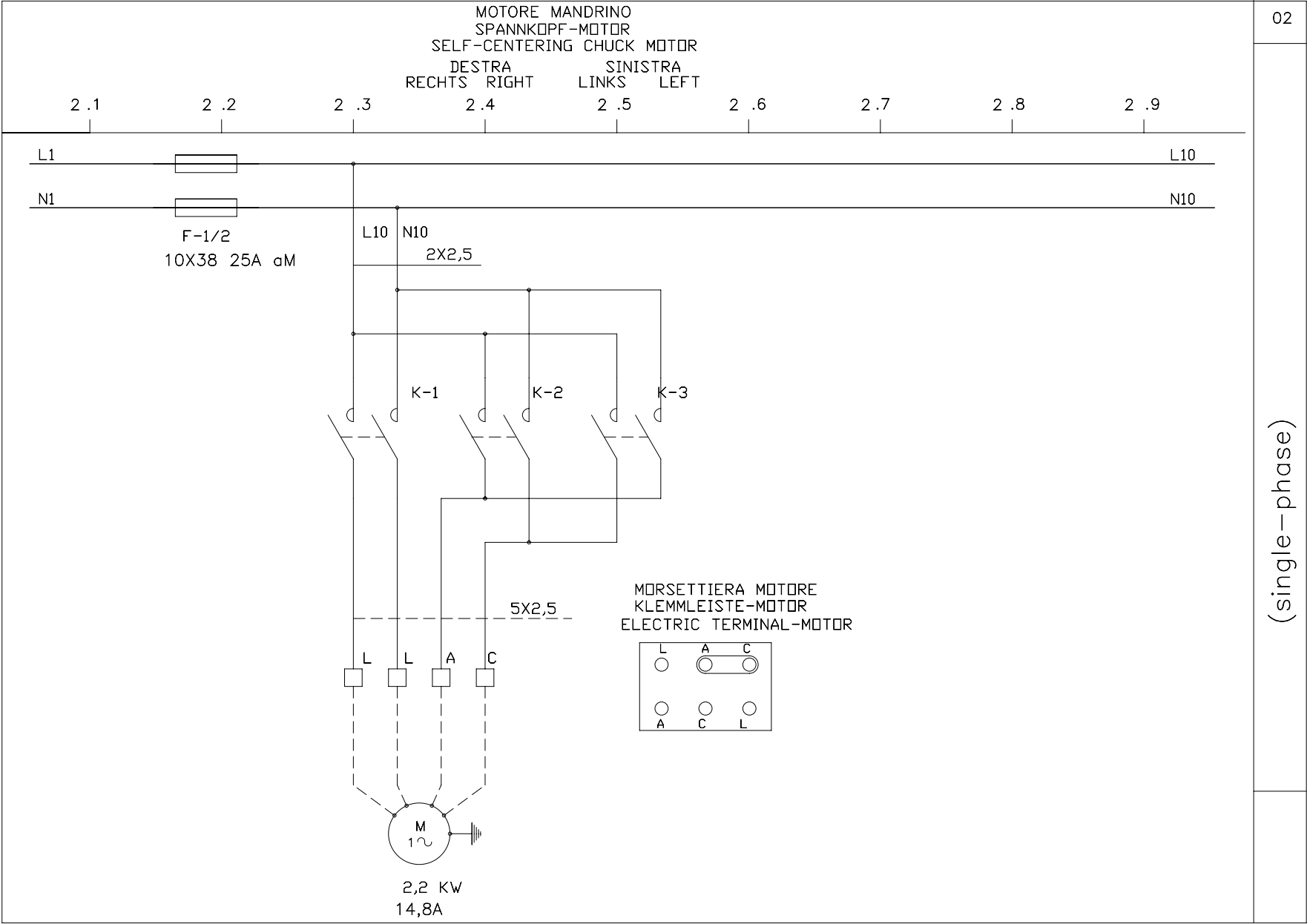


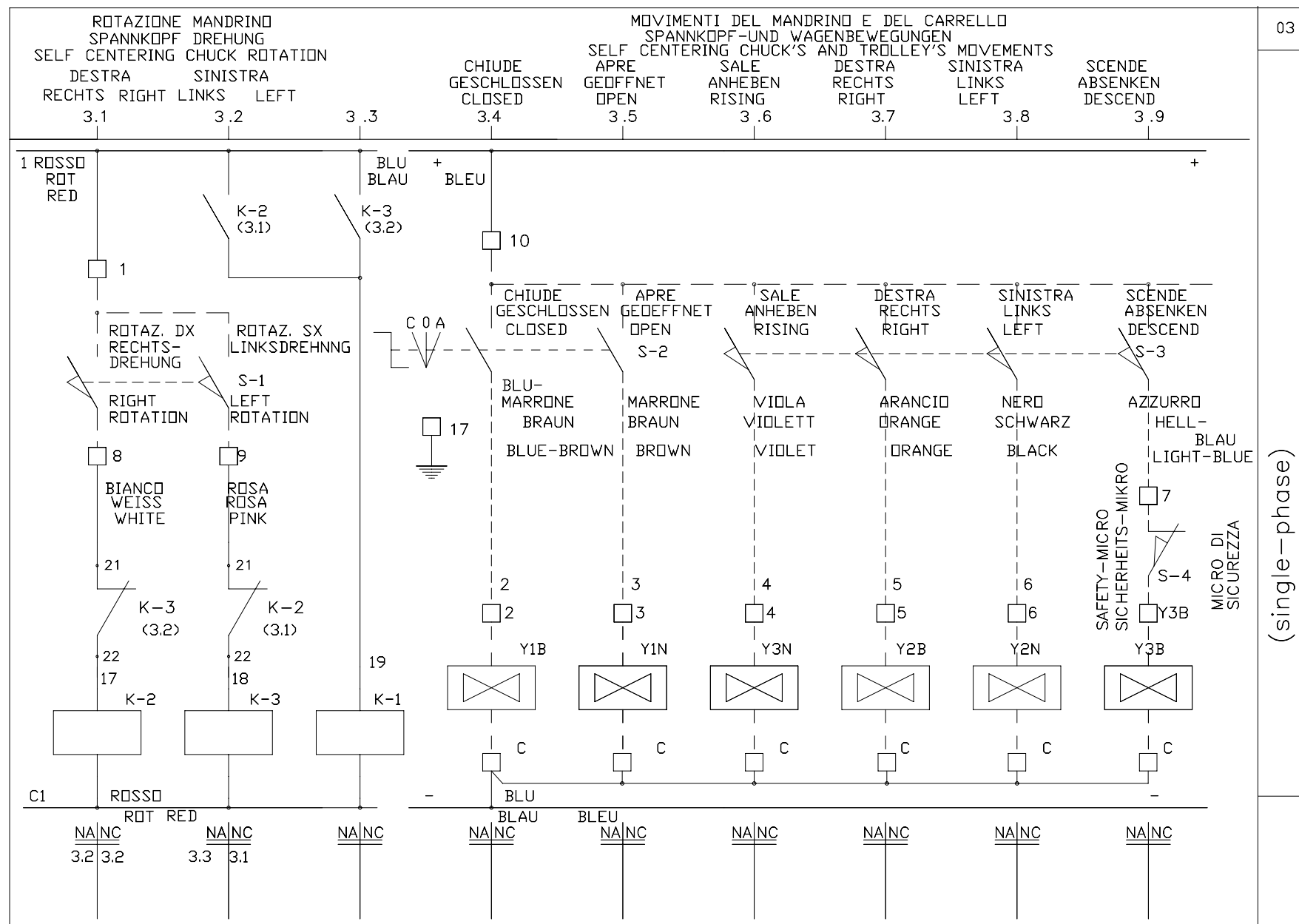
TRASLAZIONE BRACCIO PORTAUTENSILE				VERSCHIEBUNG DER ABDRUCKEINRICHTUNG		OPERATIVE-ARM TRANSLATION			06
SINISTRA LINKS LEFT 6.1	DESTRA RECHTS RIGHT 6.2	DISCESA ABSENKEN DESCEND 6.3	SALITA ANHEBEN RISING 6.4	SINISTRA LINKS LEFT 6.5	DESTRA RECHTS RIGHT 6.6	6.7	6.8	6.9	
<div>LINKSVERSCHIEBUNG RECHTSVERSCHIEBUNG</div> <div><div><div>BLU + BLAU+ BLUE+</div><div>S 0 D</div><div>TRASLAZ. SX LEFT TRANSLATION</div><div>ROSSO NERO RED BLACK ROT SCHWARZ</div><div>11</div><div>NA NC</div></div><div><div>TRASLAZ. DX RIGHT TRANSLATION</div><div>S-5</div><div>ROSSO BIANCO RED WHITE ROT WEISS</div><div>12</div><div>NA NC</div></div><div><div>DISCESA ABSENKEN DESCAND</div><div>ROSSO AZZURRO RED LIGHT- BLUE ROT HELLBLAU</div><div>13</div><div>NA NC</div></div><div><div>SALITA ANHEBEN RISING</div><div>GRIGIO NERO GREY BLACK GRAU SCHWARZ</div><div>14</div><div>NA NC</div></div><div><div>SINISTRA LINKS LEFT</div><div>BIANCO MARRONE BROWN WEISS BRAUN</div><div>15</div><div>NA NC</div></div><div><div>DESTRA RECHTS RIGHT</div><div>S-6</div><div>ROSSO GRIGIO RED GREY ROT GRAU</div><div>16</div><div>NA NC</div></div></div>									
(three-phase)									

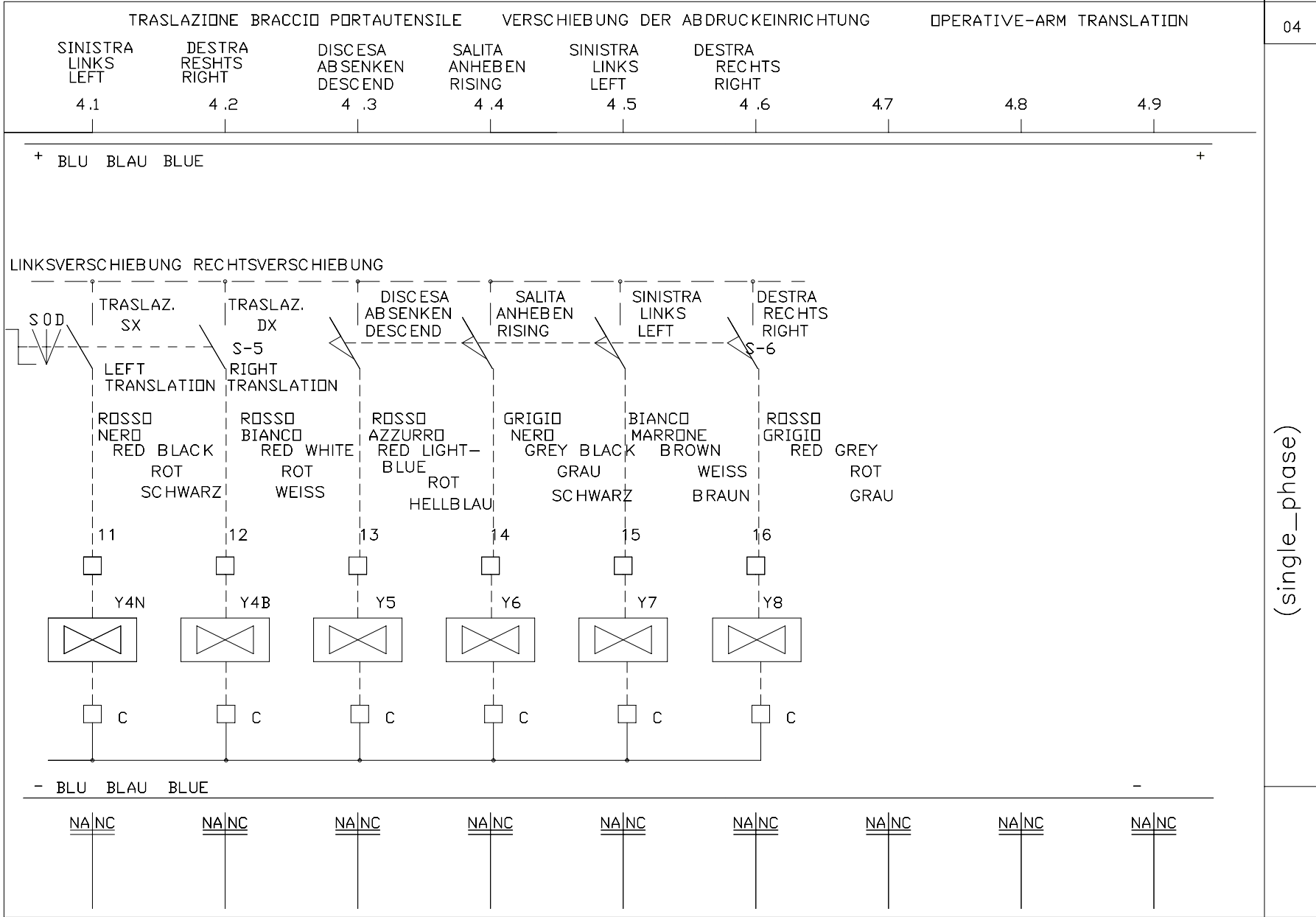
									07
7.1	7.2	7.3	7.4	7.5	7.6	7.7	7.8	7.9	(three-phase)
<div><div></div><div>COM. Elettrov. Electrovalves Common Elektroventile Gemeinsame Anschlüsse</div><div>Y3B 24VAC 1 Y1B 2 Y1N 3 Y3N 4 Y2B 5 Y2N 6 MIKRO DX 8 SX 9 Y4N 10 24VDC11 Y4B 12 Y5 13 Y6 14 Y7 15 Y8 16 17</div></div>									
<u>NA/NC</u>	<u>NA/NC</u>	<u>NA/NC</u>	<u>NA/NC</u>	<u>NA/NC</u>	<u>NA/NC</u>	<u>NA/NC</u>	<u>NA/NC</u>	<u>NA/NC</u>	

ELENCO MATERIALE PEDALIERA

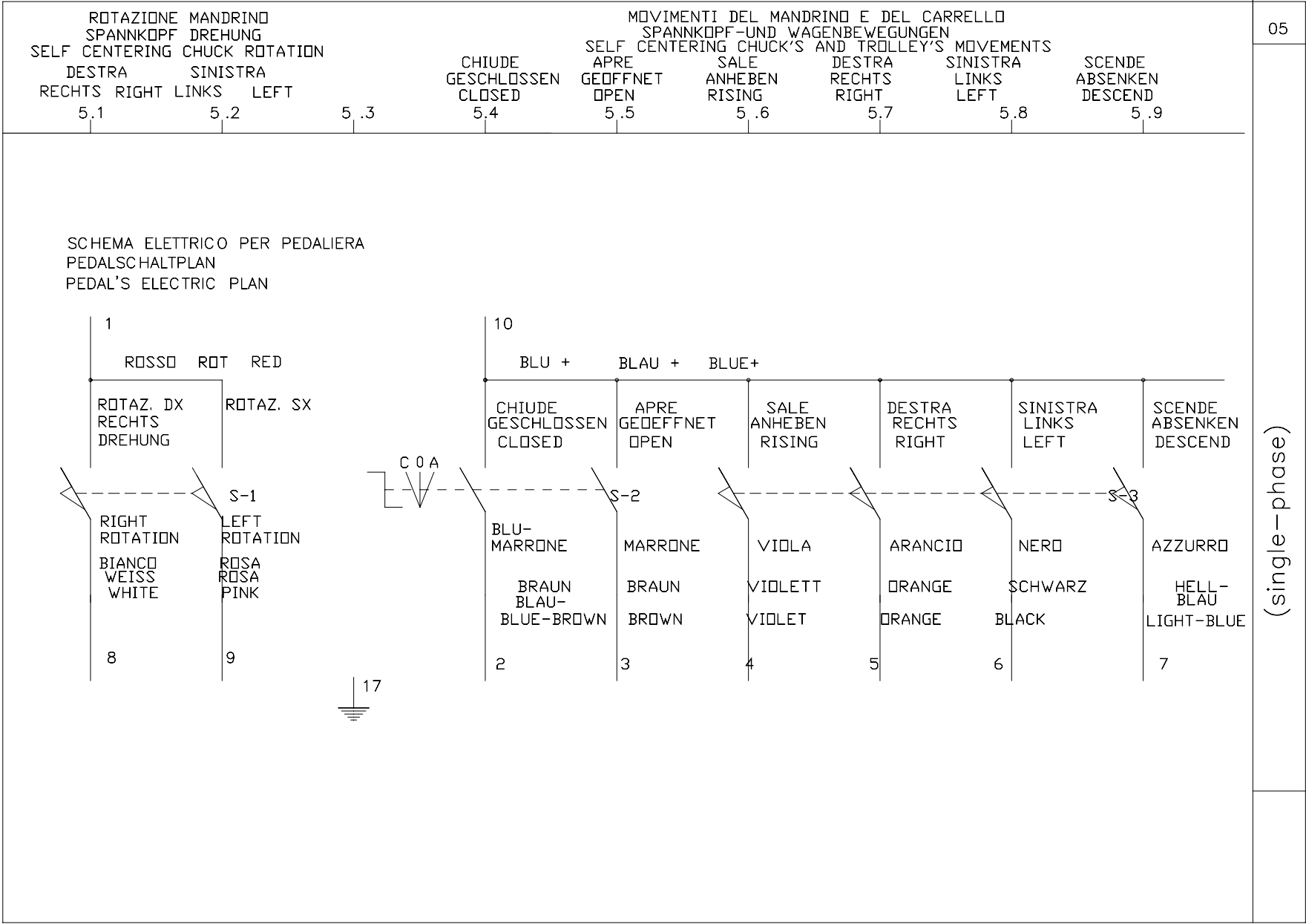








(single_phase)



TRASLAZIONE BRACCIO PORTAUTENSILE			VERSCHIEBUNG DER ABDRUCKEINRICHTUNG			OPERATIVE-ARM TRANSLATION			06
SINISTRA LINKS LEFT	DESTRA RECHTS RIGHT	DISCESA ABSENKEN DESCEND	SALITA ANHEBEN RISING	SINISTRA LINKS LEFT	DESTRA RECHTS RIGHT				
6.1	6.2	6.3	6.4	6.5	6.6	6.7	6.8	6.9	
<div>LINKSVERSCHIEBUNG RECHTSVERSCHIEBUNG</div> <div><div><div>BLU + BLAU+ BLUE+</div><div>SOD</div><div>TRASLAZ. SX LEFT TRANSLATION</div><div>ROSSO NERO RED BLACK ROT SCHWARZ</div><div>11</div></div><div><div>TRASLAZ. DX RIGHT TRANSLATION</div><div>S-5</div><div>ROSSO BIANCO RED WHITE ROT WEISS</div><div>12</div></div><div><div>DISCESA ABSENKEN DESCAND</div><div>S-5</div><div>ROSSO AZZURRO RED LIGHT- BLUE ROT HELLBLAU</div><div>13</div></div><div><div>SALITA ANHEBEN RISING</div><div>S-5</div><div>GRIGIO NERO GREY BLACK GRAU SCHWARZ</div><div>14</div></div><div><div>SINISTRA LINKS LEFT</div><div>S-6</div><div>BIANCO MARRONE BROWN WEISS BRAUN</div><div>15</div></div><div><div>DESTRA RECHTS RIGHT</div><div>S-6</div><div>ROSSO GRIGIO RED GREY ROT GRAU</div><div>16</div></div></div>									
NA NC	NA NC	NA NC	NA NC	NA NC	NA NC	NA NC	NA NC	NA NC	(single-phase)

MORSETTIERA QUADRO ELETTRICO KLEMMLEISTE SCHALTPLAN ELECTRIC TERMINAL BOARD									07
7.1	7.2	7.3	7.4	7.5	7.6	7.7	7.8	7.9	(single-phase)
<div><div><div>C</div><div>C</div><div>C</div><div>C</div><div>C</div><div>C</div><div>C</div><div>C</div><div>C</div><div>C</div><div>C</div><div>C</div><div>C</div></div><div>COM. ELETTROV. ELECTROVALVES COMMON ELEKTROVENTILE GEMEINSAME ANSCHLUSSE</div></div> <div><div>Y3B</div><div>24VAC 1</div><div>Y1B 2</div><div>Y1N 3</div><div>Y3N 4</div><div>Y2B 5</div><div>Y2N 6</div><div>MIKRO</div><div>DX 8</div><div>SX 9</div><div>Y4N 10</div><div>24VDC11</div><div>Y4B 12</div><div>Y5 13</div><div>Y6 14</div><div>Y7 15</div><div>Y8 16</div><div>17</div></div>									
<div>NA NC</div>	<div>NA NC</div>	<div>NA NC</div>	<div>NA NC</div>	<div>NA NC</div>	<div>NA NC</div>	<div>NA NC</div>	<div>NA NC</div>	<div>NA NC</div>	

ELENCO MATERIALE PEDALIERA									
				SUPPORTO MANIPOLATORE			300443		
				CORPO PEDALIERA			300515		
				GRUPPO COPERCHIO PEDALIERA			300771		
5.6 5.9	S3	1		MANIPOLATORE A QUATTRO POSIZIONI			300375 – 300378 3000377 – 300380 300381 CF83161		CROUZED
5.4 5.4	S1 S5	2		DEVIATORE INSTABILE CON CAPPUCCIO			S1F–C/2T+B3 T18/1 300378		FEME
5.1	S–1	2		MICROINTERRUTTORE			MS–09		PIZZATO
ELENCO MATERIALE QUADRO ELETTRICO									
				CASSETTA IN METALLO VERNICIATO IP 54			6084		EBI
2.1	Q–2	1		COMMUTATORE DI POLARITA' 5,5 kW			C-SO162891PL1		VEMER
1.6	V	1		PONTE DI RADDRIZZATORI 25A 400V			KBPC2508		MIC
7.7		29		MORSETTI COMPONIBILE 2,5 mmq COMPLETI DI PETTINE PIASTRINA TERMINALE E BLOCCHETTI DI FISSAGGIO			177206 + 160890 + 170611 + 954000		WEIDMULLER
7.7		1		MORSETTO DI TERRA 2,5 mmq			1772090		WEIDMULLER
1.6	T	1		TRASFORMATORE MONOFASE 100VA PRIM. 110/230/400 +SCHERMO SEC. 24(50)/26(50)			1381416		ARES
1.5 1.7	F6 F7	2		FUSIBILE 5X20 3,15A			5X20 3,15A		WEBER
1.5 1.7	F4 F5	2		FUSIBILE 5X20 2A			5X20 2A		WEBER
1.5 1.7 F5 F6 F7	F4 F5 F6 F7	4		PORTAFUSIBILE PER GUIDA			SFR4		CABUR
3.9	s–4	1		MICROINTERRUTTORE DI SICUREZZA			3SE3 100–0B FD 601		SIEMENS PIZZATO
2.4 2.4	K–2 K–3	2		CONTATTORE TRIPOLARE 1NA+1NC 24V AC 7,5 kW			3TF42 11–OAC2		SIEMENS
2.1	K–1	1		CONTATTORE TRIPOLARE 1NA 24V AC 11kW			3TF43 10–OAC2		SIEMENS
2.2	F/1.2			FUSIBILE 32A 10X38			1421032		WEBER
2.2	F/1 F/2	1		PORTAFUSIBILE BIPOLARE 30X38			3RW7031 Q13802		SIEMENS OMEGA
1.4	Q–3	1		SALVAMOTORE MAGNETOTERMICO TRIPOLARE 7/10A			3RV1011–1JA10		SIEMENS
1. 2	Q–1	1		INTERRUTTORE CON BLOCCO PORTA LUCHETTABILE 3C25A			C-00250003XL6		VEMER
POS. SIGLA	Q.TA' STUCK Q.TE' Q.TY	DESCRIZIONE BENENNUNG DESCRIPTION			SIGLA E NORMA TYP.–UND NORMENBEZEI– REF. ET NORMATIVE REF. AND NORM			PRODUTTORE/FORNIT. HERSTELLER/LIEFER. PRODUCTEUR/FORNIS PRODUCER/SUPPLIER	
		(single–phase)					08		



SICAM S.r.l.

Via della Costituzione 49
42015 Correggio (RE) ITALY
Tel. +39 0522 643311
Telefax: + 39 0522 637760
<http://www.sicam.it>
sales@sicam.it