



Qualcuno di cui ti puoi fidare
(Someone you can trust)

**SMONTAGOMME
TYRE CHANGER**

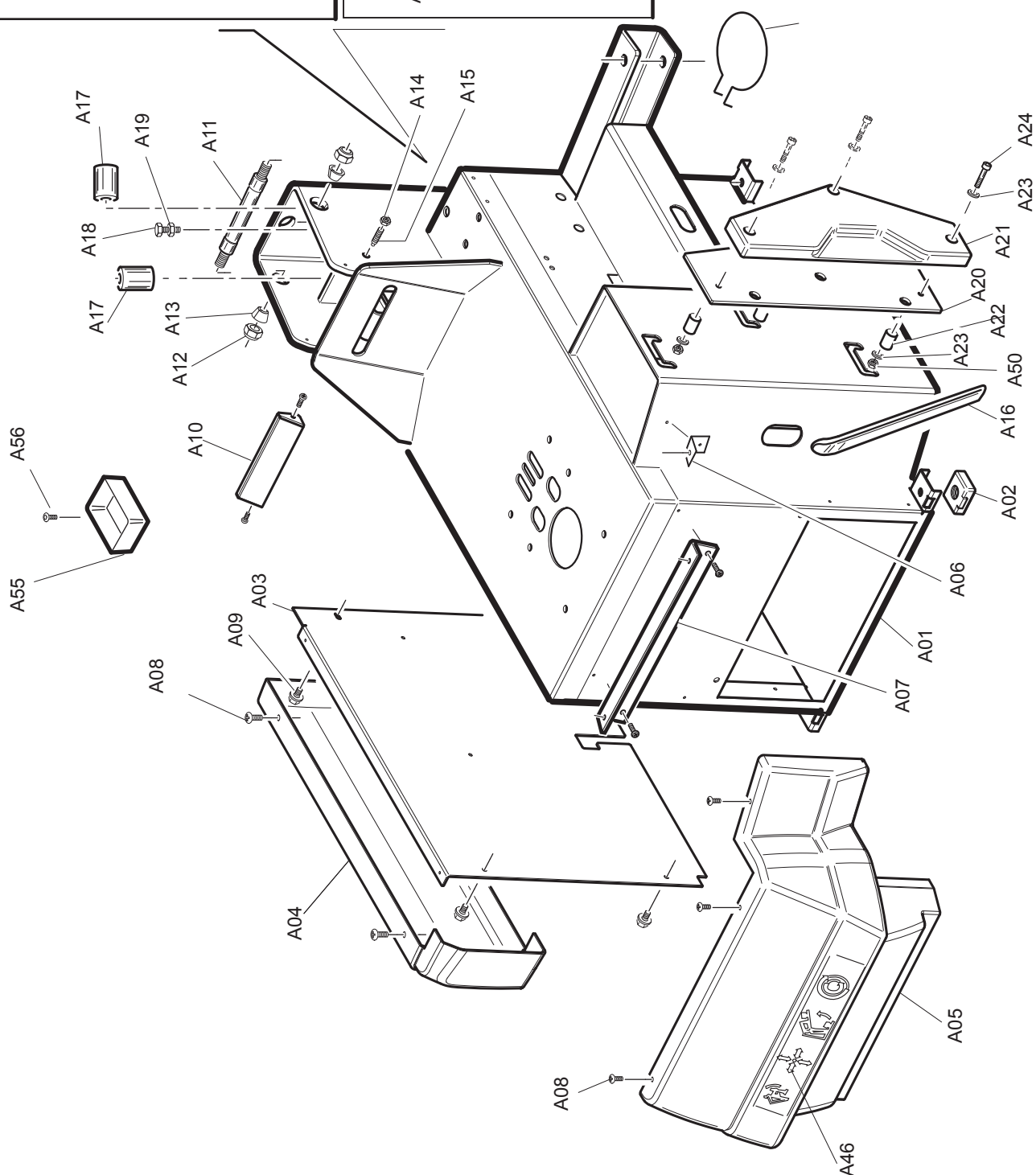
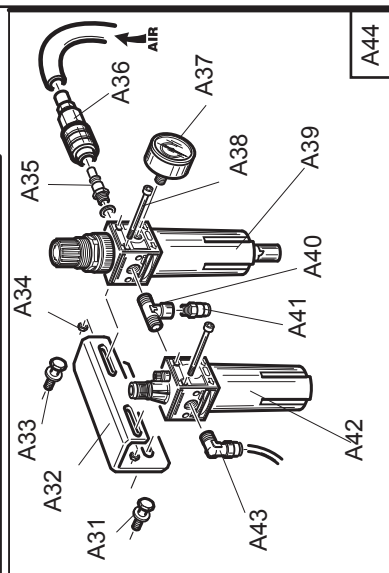
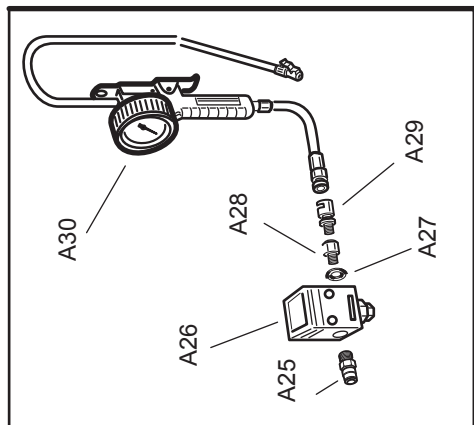
RASE.2125

Esploso ricambi - Spare parts

Version 3.1 - January 2014

INDICE - INDEX

| | | |
|---------|----------------------------|----------------------|
| Tav. A | Carcassa | Body |
| Tav. B | Palo Verticale | Vertical Arm |
| Tav. B1 | Torretta di montaggio | Mounting Head |
| Tav. C | Piastra autocentrante | Turntable |
| Tav. C1 | Piastra autocentrante T.I. | T.I. Turntable |
| Tav. D | Riduttore | Gearbox |
| Tav. E | Stallonatore | Bead Breaker |
| Tav. F | Pedaliera 1 velocità | 1-speed Pedal Unit |
| Tav. F1 | Pedaliera 2 velocità | 2-speed Pedal Unit |
| Tav. G | Gruppo T.I. | T.I. Unit |
| Tav. H | Struttura TPH | TPH Unit |
| Tav. J | Bracci e centralina TPH | Arms & TPH C.U. |
| Tav. L | Gonfiaggio a pedale | Pedal inflating unit |
| Tav. M | Variante MOTOINVERTER | MOTOINVERTER vers. |
| Tav. V | Schemi pneumatici | Pneumatic diagrams |
| Tav. Y | Schemi elettrici | Wiring diagrams |
| Tav. Z | Ricambi consigliati | Recommended spares |



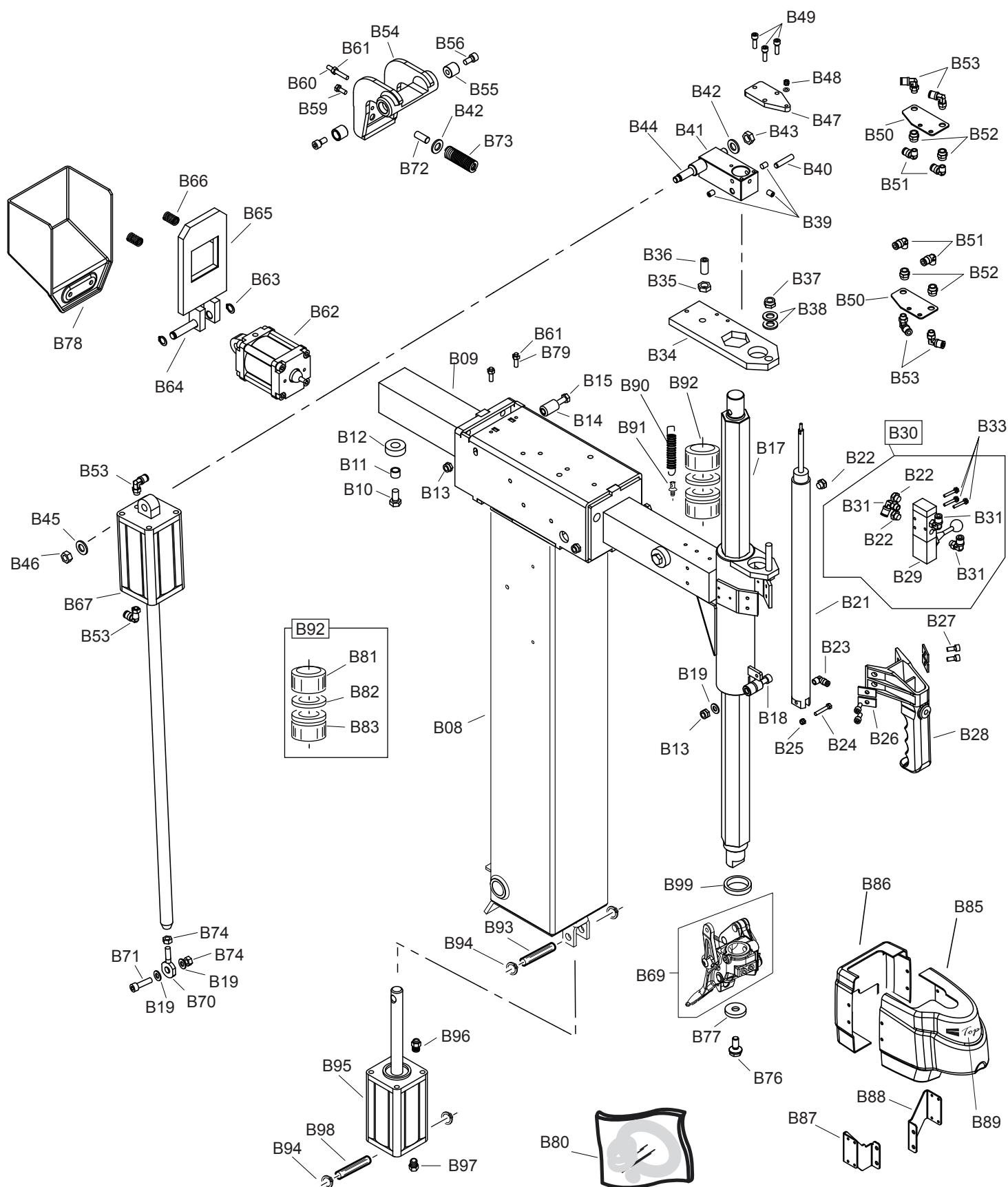
| | | |
|--|---------------|-------------------------|
| | TAV. A | TELAIO / CHASSIS |
|--|---------------|-------------------------|

| RS | REF | COD. | DESCRIZIONE | DESCRIPTION |
|----|----------|--------------|----------------------------------|--------------------------------|
| | A01 | 4-600952A/** | CARCASSA | BODY |
| | (#1) A02 | 3305148 | PIEDE IN GOMMA | SHOCK ABSORBER |
| | A02 | 4-406032 | PIEDE IN GOMMA | SHOCK ABSORBER |
| | A03A | 4-600953/** | COPERCHIO CHIUS. LAT. (VERS. TI) | COVER (TI VERSION) |
| | A04 | 4-600999 | CARTER LATERALE | LATERAL COVER |
| | A05 | 4-600997 | CARTER FRONTALE | FRONTAL COVER |
| | A06 | 4-600528/90 | STAFFA CORTA X CARTER | COVER SUPPORT |
| | A07 | 4-600375/90 | STAFFA LUNGA X CARTER | LONG COVER SUPPORT |
| | A08 | 2-02888 | VITE VATBIC D4,2X9,5 | SCREW D4,2X9,5 |
| | A09 | 2-02885 | VITE AUTOFILETTANTE 6,3 X 16 | SELF TAPPING SCREW |
| | A10 | 4-600497/90 | PROTEZIONE | PROTECTION |
| | A11 | 006503500 | PERNO FULCRO | TILTIN PIN |
| | A12 | 2-01174 | DADO AUTOBLOCCANTE M18X1,5 | LOCKNUT M18X1,5 |
| | A13 | 001002500 | BOCCOLA CONICA | SPLIT BUSH |
| | A14 | 2-91640 | DADO ESAGONALE M12 | NUT M12 |
| | A15 | 2-71370 | VITE STEI M12X25 | SCREW M12X25 |
| | A16 | 044900800 | LEVA ALZATALLONE | TYRE LEVER |
| | A17 | 008901100 | TAMPONE ARRESTO PALO | SHOCK ABSORBER |
| | A18 | 2-01037 | VITE TE M10X30 | SCREW M10X30 |
| | A19 | 2-91726 | DADO ESAGONALE M10 | NUT M10 |
| | A20 | 004804562 | LAMIERA APPOGGIO STALLONATORE | SUPPORT PLATE |
| RS | A21 | 000500400 | APPOGGIO STALLONATORE | WEEL SUPPORT |
| | A22 | 007900800 | BOCCOLA GUIDA | BUSH |
| | A23 | 2-00212 | ROSETTA Ø 8 | WASHER Ø 8 |
| | A24 | 2-00322 | VITE TCEI M8X20 | SCREW M8X20 |
| | A25 | 3-00459 | RACCPN-D-G1/4G-T8 | UNION-D-G1/4G-T8 |
| | A26 | 049802100 | VALVOLA LIMITATRICE 4,2 BAR GONF | PRESSURE REGULATOR 4,2 BAR |
| | A27 | 047801800 | ROSETTA 1/4" RAME | COPPER WASHER |
| | A28 | 047501600 | RACCORDO 2520 - 1/4" | UNION 2520 - 1/4" |
| | A29 | 047501700 | RACCORDO BAIONETTA 1/4" 9 AM | UNION 1/4" 9 AM |
| | A30 | 3-00447 | PISTOLETTA COMPLETA BAR | COMPLETE AIRLINE GAUGE BAR |
| | A30A | 3-00446 | PISTOLETTA COMPLETA BAR-PSI | COMPLETE AIRLINE GAUGE BAR-PSI |
| | A31 | 2-00211 | RONDELLA | WASHER |
| | A32 | 008802500 | SQUADRETTA SUPPORTO LUBRIF | LUBRICATOR SUPPORT SQUARE |
| | A33 | 2-00361 | VITE 6X16 | SCREW |
| | A34 | 2-00143 | DADO M4 | NUT M4 |
| | A35 | 047500600 | GIUNTO RAPIDO MASCHIO | FAST UNION M |
| | A36 | 047500500 | RACCORDO RAPIDO A SFERA | AIRLINE CONNECTION |
| | A37 | 045300100 | MANOMETRO | MANOMETER |
| | A38 | 2-71337 | VITE TECI 4X50 | SCREW TECI 4X50 |
| RS | A39 | 3-00964 | FILTRO REGOLATORE | COMPLETE FILTER |
| | A40 | 3-00169 | RACCORDO T | UNION T |
| | A41 | 3-00459 | RACCORDO D | UNION D |
| RS | A42 | 3-00963 | LUBRIFICATORE | COMPLETE AIR LUBRICATOR |
| | A43 | 3-00221 | RACCORDO L | UNION L |
| | A44 | 063901400 | FILTRO LUBRIFICATORE COMPLETO | COMPLETE LUBRICATOR FILTER |
| | A46 | 000101200 | ADESIVO PEDALIERA | PEDAL ADHESIVE |
| | A50 | 2-01137 | DADO M8 | NUT M8 |
| | A55 | 002100800 | VASCHETTA LATERALE | LATERAL CONTAINER |
| | A56 | 2-00936 | VITE SPEI M6x10 | SCREW SPEI M6x10 |

RS= RICAMBI CONSIGLIATI / RECOMMENDED SPARES

AGGIORNAMENTI / UPDATE:

(#1) : fino alla matricola / up to serial number 101060066



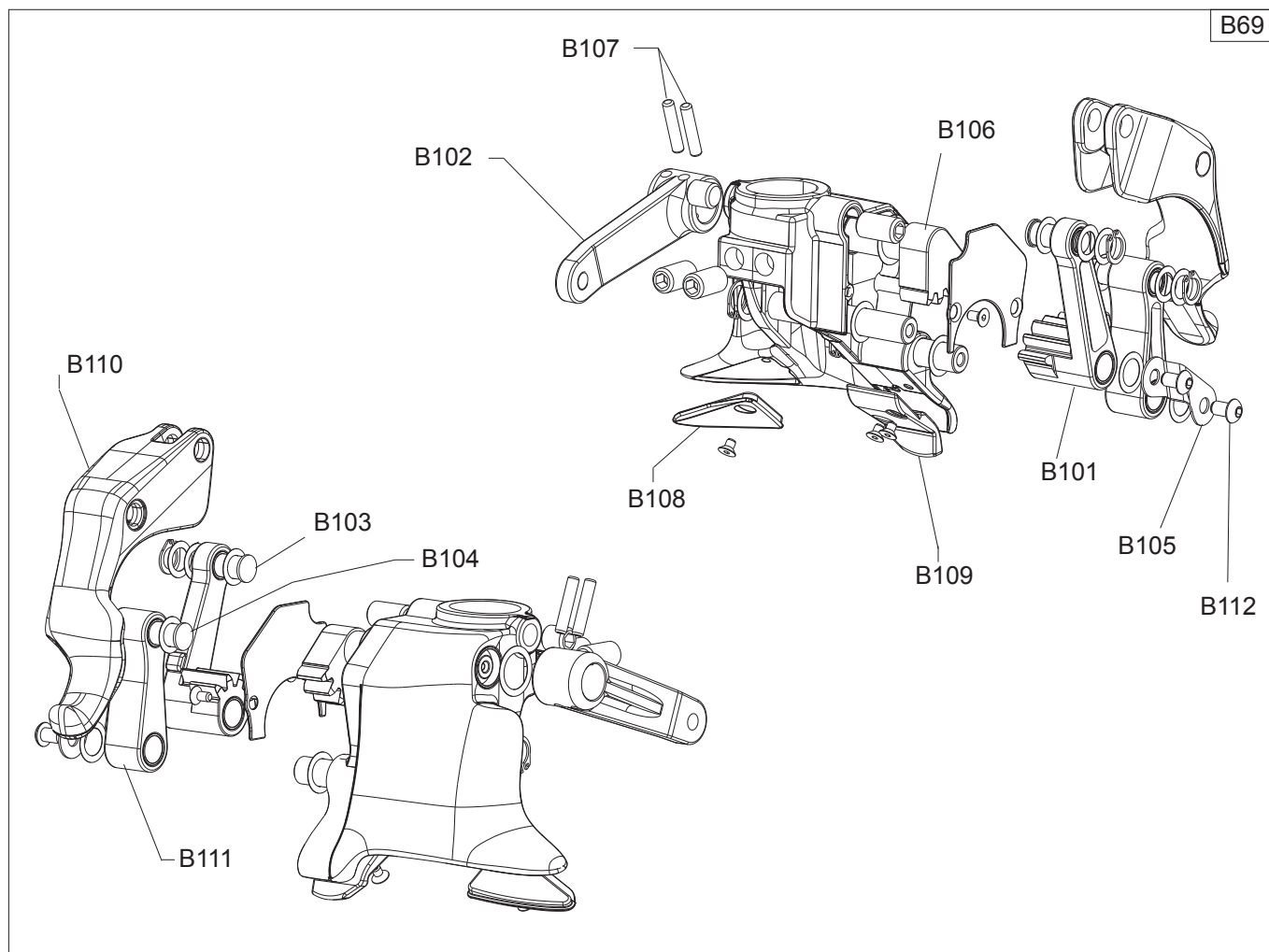
| | | |
|--|---------------|---------------------------------------|
| | TAV. B | PALO VERTICALE / VERTICAL POST |
|--|---------------|---------------------------------------|

| RS | REF | COD. | DESCRIZIONE | DESCRIPTION |
|----|-----|-------------|------------------------------|-----------------------------|
| | B08 | 4-601596/** | PALO VERTICALE | VERTICAL COLUMN |
| | B09 | 4-601880/** | BRACCIO ORIZZONTALE TOP LINE | HORIZONTAL ARM TOP LINE |
| | B10 | 2-00379 | VITE TE M10X20 | SCREW TE M10X20 |
| | B11 | 002702700 | DISTANZIALE TAMPONE | SPACER |
| | B12 | 008901000 | TAMPONE ARRESTO BRACCIO | ADSORBER FOR HORIZONTAL ARM |
| | B13 | 2-01137 | DADO AUTOBLOCCANTE M8 | SELF-LOCKING NUT M8 |
| | B14 | 4-601005 | RULLO BRACCIO | HORIZONTAL ARM ROLLER |
| | B15 | 2-02876 | VITE TE M8X140 | SCREW TE M8X140 |
| | B17 | 4-601541 | ASTA VERTICALE LL | VERTICAL ARM LL |
| | B18 | 2-00324 | VITE TCEI M8X40 | SCREW TCEI M8X40 |
| | B19 | 2-00212 | RONDELLA PIANA D.8 | FLAT WASHER D.8 |
| | B21 | 4-601547 | CILINDRO ALZATA ASTA LL | CYLINDER FOR VERTICAL ARM |
| | B22 | 043300200 | SILENZIATORE A SFERE G1/8 | SILENCER G1/8 |
| | B23 | 3-00220 | RACCPN L G1/8 - T4 | UNION L G1/8 - T4 |
| | B24 | 2-00358 | VITE TE M5X30 | SCREW TE M5X30 |
| | B25 | 2-71524 | DADO AUTOBLOCCANTE M5 | SELF-LOCKING NUT M5 |
| | B26 | 4-600740-1 | SPESSORE X VITI | SPACERS FOR SCREW |
| | B27 | 2-00728 | VITE TCEI M6X14 | SCREW M6X14 |
| | B28 | 5-600381 | MANIGLIA COMPLETA | COMPLETE HANDLE |
| | B29 | 3-02567 | VALVOLA PN 5/2 G1/8 | VALVE PN 5/2 G1/8 |
| | B30 | 5-600343 | VALVOLA COMPLETA | COMPLETE VALVE |
| | B31 | 3-00053 | RACCPN L G1/8 - T6 | UNION L G1/8 - T6 |
| | B33 | 2-00352 | VITE TE M4X25 | SCREW TE M4X25 |
| | B34 | 4-601883 | PIASTRA BLOCCAGGIO ASTA | MOUNTING BAR LOCKING PLATE |
| | B35 | 2-91640 | DADO ES B M12 | NUT M12 |
| | B36 | 2-72012 | VITE STEI M12X25 | SCREW STEI M12X25 |
| | B37 | 2-71525 | DADO AUTOBLOCCANTE M10 | SELF-LOCKING NUT M10 |
| | B38 | 045604000 | MOLLA A TAZZA | BELLEVILLE WASHER |
| | B39 | 2-00529 | VITE STEI M8X10 | SCREW M8X10 |
| | B40 | 2-03099 | SPINA CILINDRICA D.8X40 | CYLINDRICAL PIN D.8X40 |
| | B41 | 4-601542-1 | BLOCCETTO ATTACCO ASTA | FIXING BLOCK FOR BAR |
| | B42 | 2-00213 | RONDELLA PIANA D.10 | FLAT WASHER D.10 |
| | B43 | 2-91726 | DADO ES M10 | NUT M10 |
| | B44 | 4-601546B-1 | PERNO ATTACCO CILINDRO | CYLINDR FIXING PIN |
| | B45 | 2-00214 | RONDELLA PIANA D.12 | FLAT WSAHER D.12 |
| | B46 | 2-91640 | DADO ES M12 | NUT M12 |
| | B47 | 4-601543-1 | PIASTRA ATTACCO CILINDRO | FIXING PLATE FOR CYLINDER |
| | B48 | 2-00143 | DADO M4 | NUT M4 |
| | B49 | 2-00310 | VITE TCEI M6X20 | SCREW TCEI M6X20 |
| | B50 | 4-601545-1 | LAMIERA SUPPORTO SPIRALI | SUPPORT PLATE |
| | B51 | 3-00219 | RACCPN L G1/8 - T6 | UNION L G1/8 - T6 |
| | B52 | 3-00102 | RACCPN MANICOTTO G/8F | COUPLING BOX G1/8F |
| | B53 | 3-00053 | RACCPN LO G1/8 - T6 | UNION LO G1/8 - T6 |
| | B54 | 4-601242 | CAMMA DI BLOCCAGGIO | LOCKING CAM |
| | B55 | 4-601249 | BOCCOLA PER CAMMA | CAM BUSH |
| | B56 | 2-00320 | VITE TCEI M8X20 | SCREW TCEI M8X20 |
| | B59 | 2-00361 | VITE TE M6X16 | SCREW TE M6X16 |
| | B60 | 2-72236 | VITE STEI M6X45 | SCREW M6X45 |
| | B61 | 2-00146 | DADO ES M6 | NUT M6 |

RS= RICAMBI CONSIGLIATI / RECOMMENDED SPARES

AGGIORNAMENTI / UPDATE:

(#2): fino alla matricola \ up to serial number 130160052

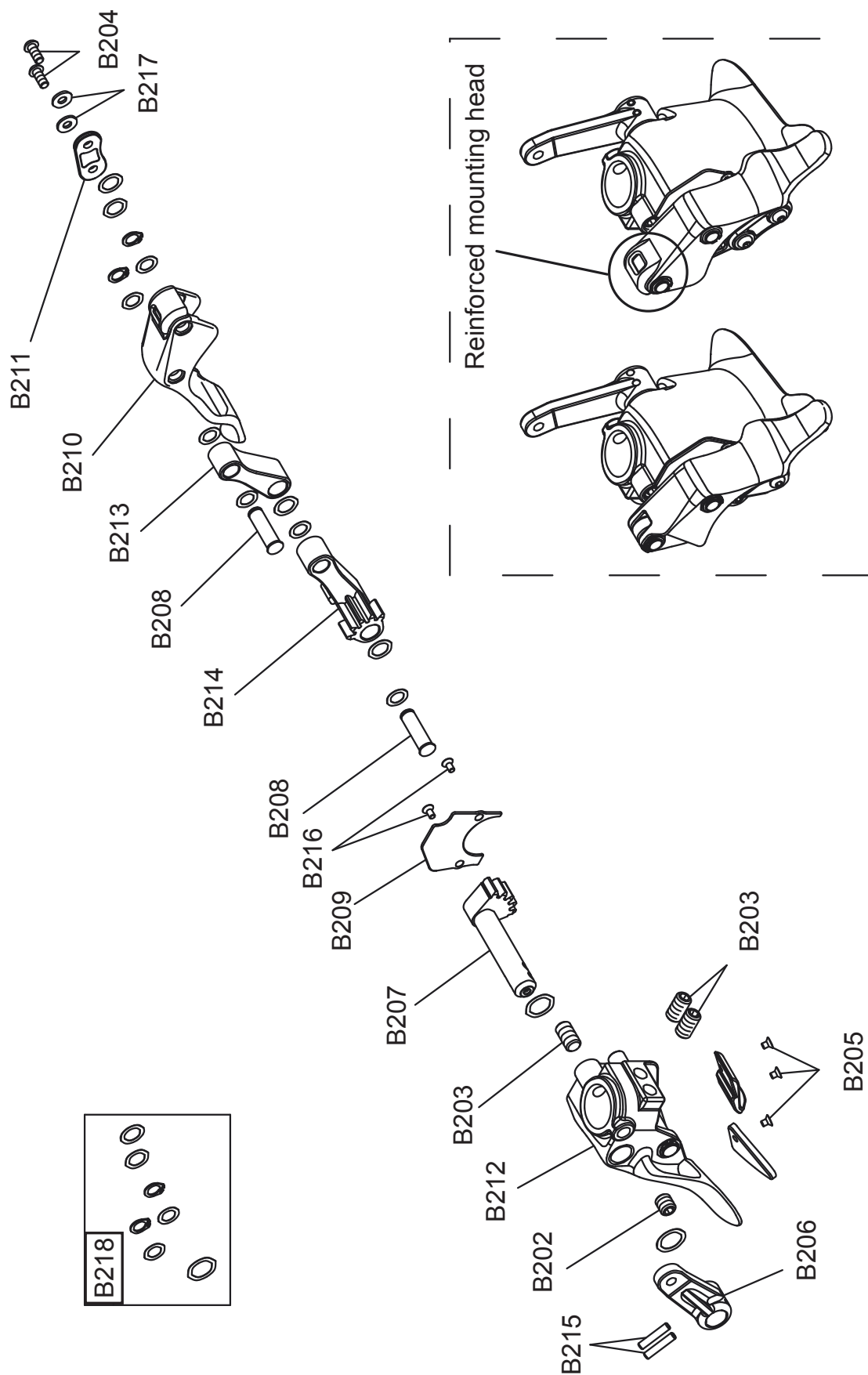


| RS | REF | COD. | DESCRIZIONE | DESCRIPTION |
|----|------|----------|-------------------|---------------|
| | B69 | 5-102266 | TORRETTA COMPLETA | COMPLETE TOOL |
| | B101 | 5-101266 | BIELLA | TRACE |
| | B102 | 4-013256 | LEVA | LEVER |
| | B103 | 4-103933 | PERNO | PIN |
| | B104 | 4-103932 | PERNO | PIN |
| | B105 | 4-104981 | LAMIERA | METAL SHEET |
| | B106 | 4-103264 | INGRANAGGIO | GEAR |
| | B107 | 2-71581 | SPINA | PLUG |
| | B108 | 4-106611 | INSERTO | INSERT |
| | B109 | 4-103502 | INSERTO | INSERT |
| | B110 | 4-103266 | UTENSILE | TOOL |
| | B111 | 5-101265 | BIELLA | TRACE |
| | B112 | 2-02569 | VITE TBEI M6X10 | SCREW M6X10 |

RS= RICAMBI CONSIGLIATI / RECOMMENDED SPARES

AGGIORNAMENTI / UPDATE:

B69

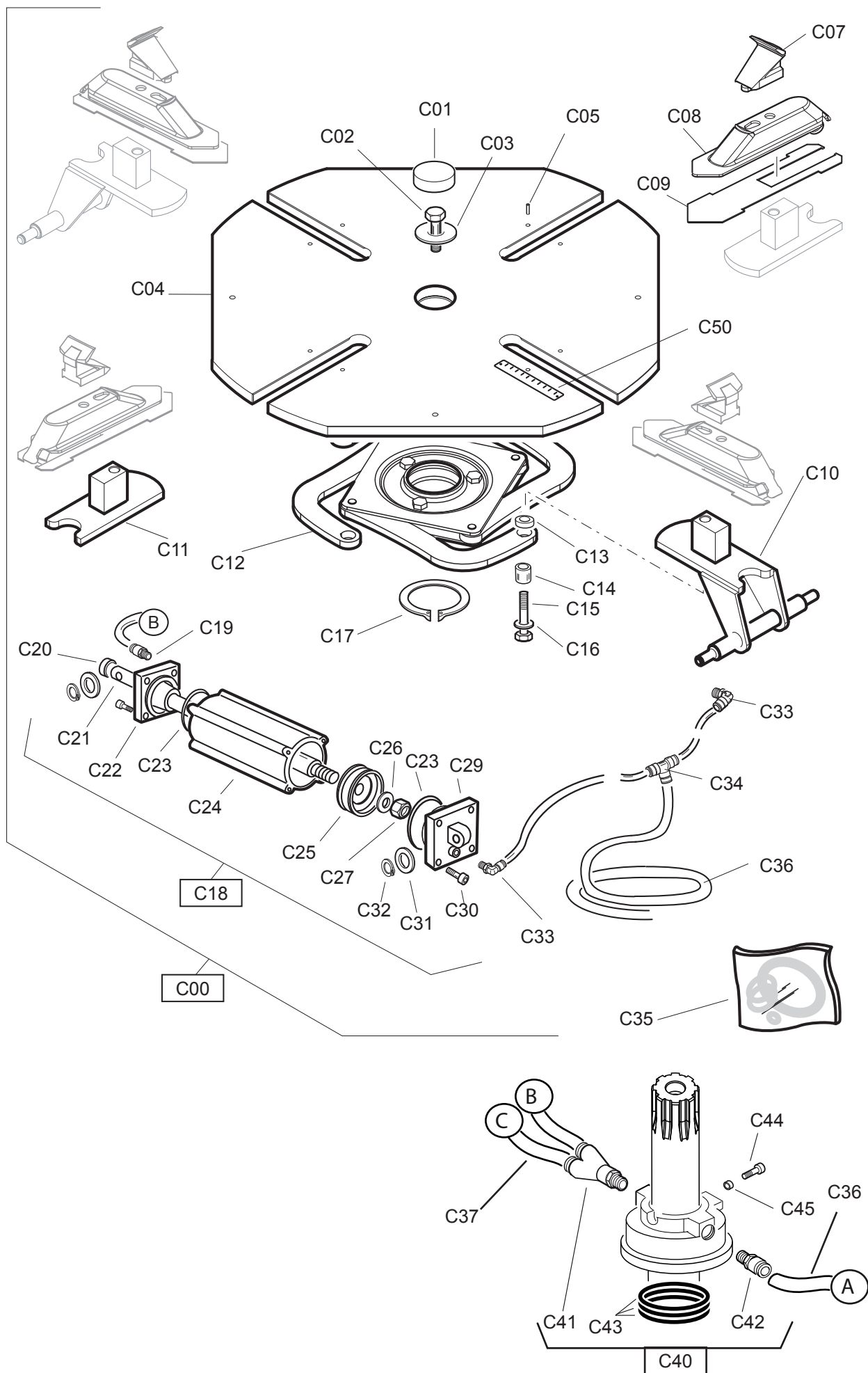


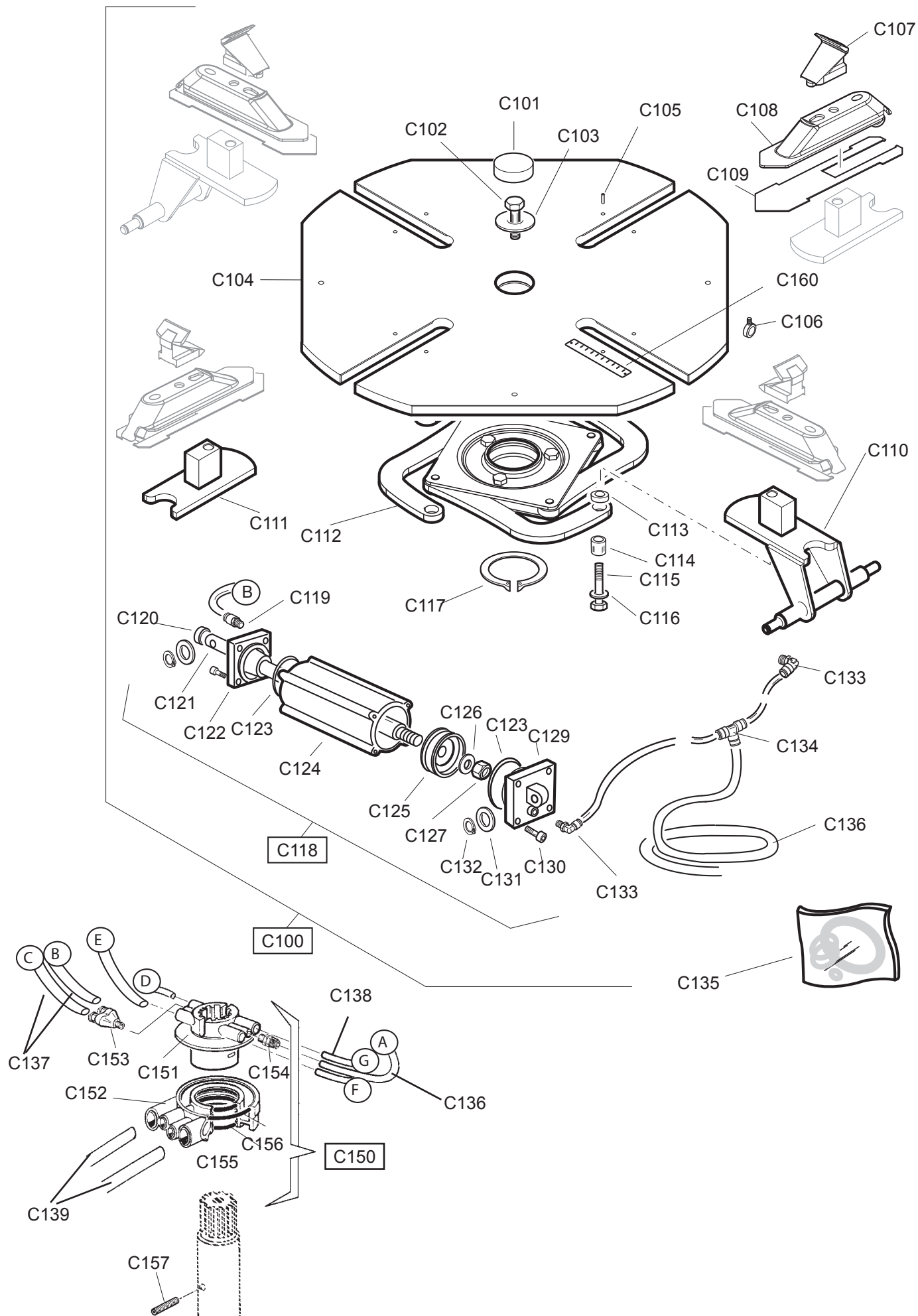
| | | |
|--|----------------|---|
| | TAV. B2 | TORRETTA / MOUNTING HEAD da matricola / from serial number 130160053 |
|--|----------------|---|

| RS | REF | COD. | DESCRIZIONE | DESCRIPTION |
|----|------|----------|--------------------------------|-------------------------------|
| | B69 | 5-104774 | TORRETTA COMPLETA | COMPLETE HEAD |
| | B202 | 2-01040 | VITE STEI M12X12 | SOCKET SET SCREW M12X12 |
| | B203 | 2-02096 | VITE STEI M12X20 | SOCKET SET SCREW M12X20 |
| | B204 | 2-03409 | VITE TBEI ISO7380 M6X14 | SCREW M6X14 |
| | B205 | 2-03438 | VITE TSPEI M4X6 | SOCKET COUNTERSUNK SCREW M4X6 |
| | B206 | 4-103256 | LEVA DI COMANDO | LEVER |
| | B207 | 4-103264 | INGRANAGGIO DI COMANDO | GEAR |
| | B208 | 4-103932 | PERNO ANTERIORE | PIN |
| | B209 | 4-106610 | COPERTURA INGRANAGGI | GEAR COVER |
| | B210 | 4-115079 | GANCIO | LEVERLESS HOOK |
| | B211 | 4-115080 | RINFORZO BIELLE | STIFFENING |
| | B212 | 4-115182 | TORRETTA BASC. CON PERNI | HEAD WITH PINS |
| | B213 | 5-101265 | BIELLA + BOCCOLE | TRACE |
| | B214 | 5-104772 | BIELLA CON INGR. + BOCCOLE | TRACE |
| | B215 | 2-03737 | SPINA CILINDR. D5 (H6)X24MM | PARALLEL PIN D5 (H6)X24MM |
| | B216 | 2-72205 | VITE TSPEI M4X8 | SOCKET COUNTERSUNK SCREW M4X8 |
| | B217 | 453469 | RONDELLA ACC.D. 6,3X14,8X1,5 | SHIM WASHER 6.3X14.8X1.5 |
| | B218 | 5-105825 | RICAMBIO MINUTERIA TORRETTA LL | SHIM AND SPRING RING KIT |
| | | | | |

RS= RICAMBI CONSIGLIATI / RECOMMENDED SPARES

AGGIORNAMENTI / UPDATE:



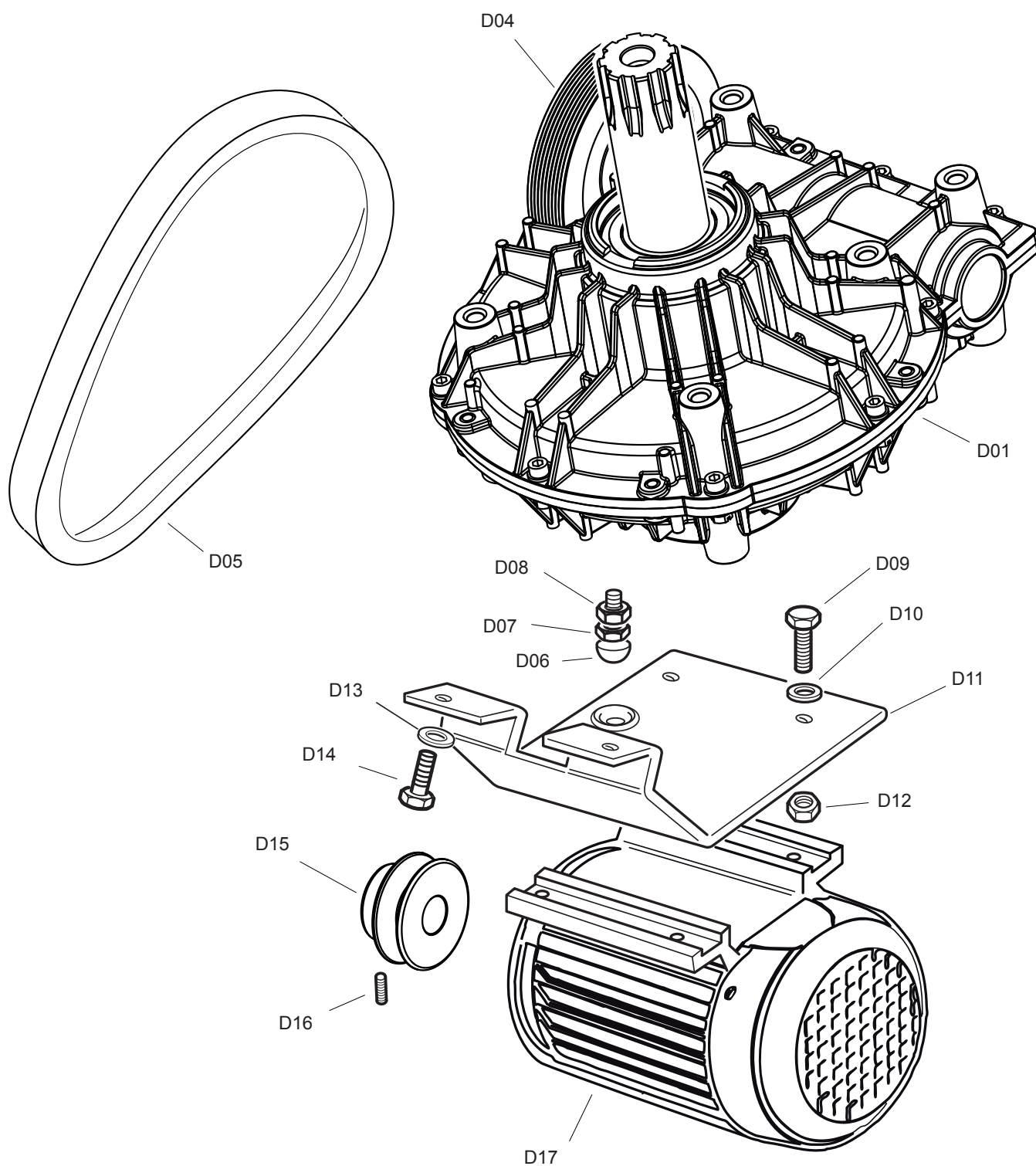


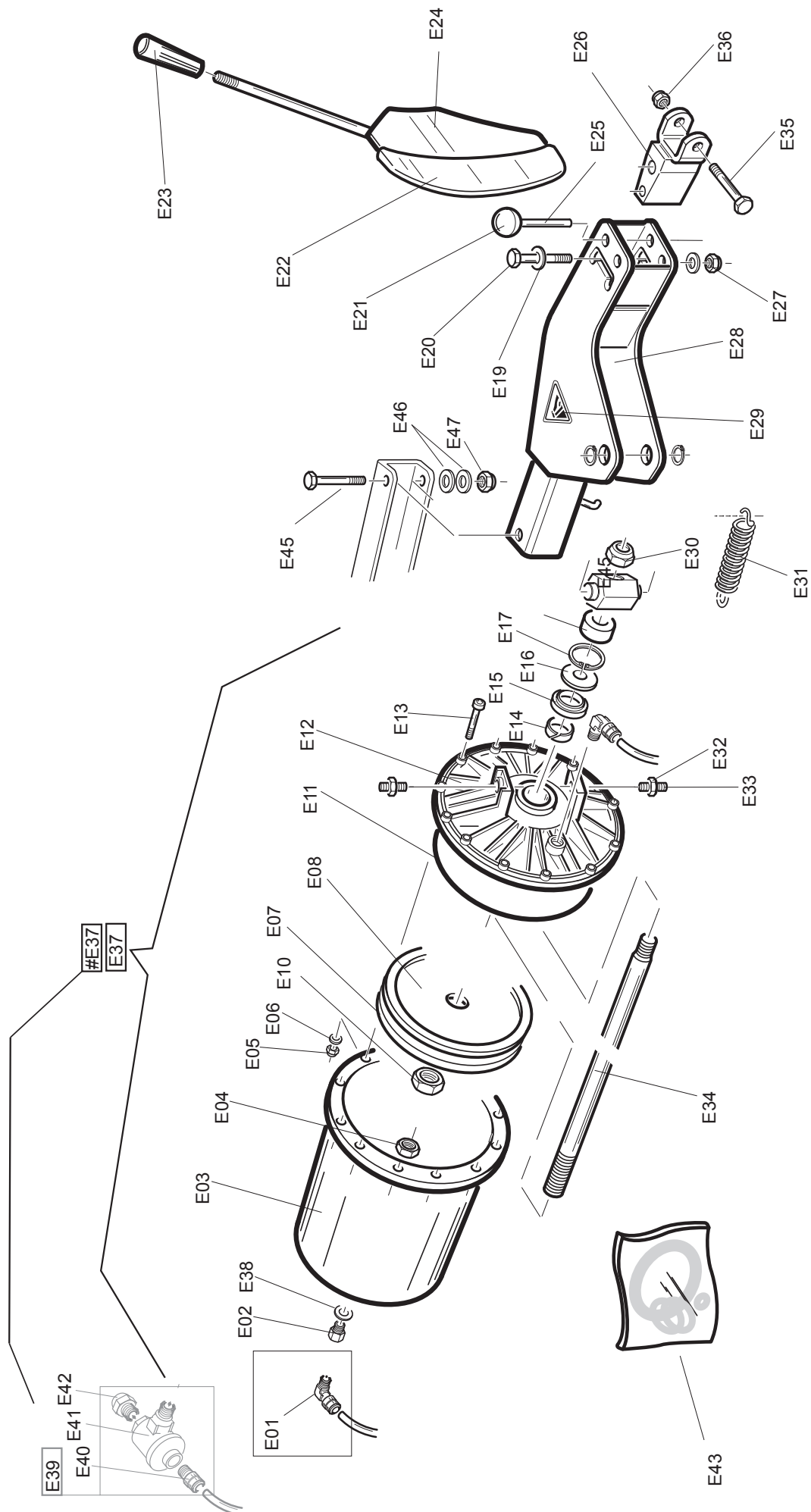
| | | |
|--|----------------|--|
| | TAV. C1 | PIASTRA AUTOCENTRANTE T.I. / T.I. TURNTABLE |
|--|----------------|--|

| RS | REF | COD. | DESCRIZIONE | DESCRIPTION |
|----|-------|-------------|-------------------------------|------------------------------|
| | C100 | 5-600937 | AUTOCENTRANTE COMPL 665-15 TI | COMPLETE TURNTABLE 665-15 TI |
| | C101 | 009000500 | TAPPO | TURNTABLE CAP |
| | C102 | 2-02857 | VITE TE M16X35X1,5 | SCREW M16X35X1,5 |
| | C103 | 007800300 | RONDELLA AUTOCENTRANTE | TURNTABLE WASHER |
| | C104 | 4-602954 | PIASTRA AUTOCENTRANTE | TURNTABLE |
| | C105 | 2-71921 | SPINA ELASTICA | SPLIT PIN |
| | C106 | 3317297 | GUIDA TUBI | HOSE GUIDE |
| RS | C107 | 003800100 | GRIFFA BLOCCAGGIO | CLAMP |
| | C108 | 088401000 | SCORREVOLE+RACCORDO | SLIDE WITH UNION |
| RS | C109 | 4-600878B-1 | LAMA COPRIASOLA | COVER BLADE |
| | C110 | 4-600474 | SCORREVOLE CON PERNO | SLIDE WITH PIN |
| | C111 | 128400900 | SCORREVOLE CON GUIDA | SLIDE WITH GUIDE |
| | C112 | 5-600190A | FLANGIA DI COMANDO | CONTROL PLATE |
| RS | C113 | 002700700 | DISTANZIALE BRACCIO | ARM SPACER |
| RS | C114 | 002700800 | BOCCOLA | BUSH |
| RS | C115 | 2-01873 | VITE TE M12X90 | SCREW M12X90 |
| RS | C116 | 2-00214 | RONDELLA D.12 | WASHER D.12 |
| | C117 | 2-01283 | ANELLO ELASTICO | SEEGER |
| | C118 | 4-600880 | CILINDRO SENZA RACCORDI | CYLINDER WITHOUT UNIONS |
| | C118A | 5-600211 | CILINDRO CON RACCORDI | CYLINDER WITH UNIONS |
| | C119 | 3-00468 | RACCPN D G1/8 - T8 | UNION D G1/8 - T8 |
| | C120 | 9003-01920 | KIT GUARNIZIONE A LABBRO | LIPPED GASKET KIT |
| | C121 | 4-601277 | STELO CILINDRO | CYLINDER SHAFT |
| | C122 | 003400700 | FLANGIA ANTERIORE | FRONT CYLINDER FLANGE |
| | C123 | 044000100 | GUARNIZIONE OR D.75 | O-RING D.75 |
| | C124 | 4-601276 | CAMICIA CILINDRO | CASING FOR CYLINDER |
| | C125 | 044000200 | GUARNIZIONE PISTONE | GASKET |
| | C126 | 007800200 | ROSETTA D.12X30 | WASHER |
| | C127 | 2-01276 | DADO ES AUTOBL M12 | SELF LOCKIG NUT M12 |
| | C129 | 003400600 | FLANGIA POSTERIORE | REAR CYLINDER FLANGE |
| | C130 | 2-00321 | VITE TCEI M8X25 | SCREW M8X25 |
| | C131 | 2-00214 | RONDELLA D.12 | FLAT WASHER D.12 |
| | C132 | 2-00025 | ANELLO ELASTICO D.12 | SEEGER D.12 |
| | C133 | 3-00049 | RACCORDO L G1/8 - T8 | UNION L G1/8 - T8 |
| | C134 | 3-00025 | RACCORDO T T8 | UNION T T8 |
| RS | C135 | 5-600860 | KIT GUARNIZIONI CILINDRO D.75 | COMPLETE GASKET BAG |
| | C136 | 009403400 | TUBO | HOSE |
| | C137 | 009404000 | TUBO | HOSE |
| | C138 | 009405200 | TUBO | HOSE |
| | C139 | 009423100 | TUBO | HOSE |
| RS | C150 | 4-600548 | RACCORDO GIREVOLE TI COMPLETO | COMPLETE TI ROTATING UNION |
| | C151 | 007500300 | RACCORDO GIREVOLE INTERNO | INTERNAL ROTATING UNION |
| | C152 | 007500200 | RACCORDO GIREVOLE ESTERNO | EXTERNAL ROTATING UNION |
| | C153 | 3-00175 | RACCPN Y G1/8 - T8 | UNION Y G1/8 - T8 |
| | C154 | 3-00464 | RACCPN D G1/8 - T8 | UNION D G1/8 - T8 |
| | C155 | 044001700 | ANELLO OR | O-RING |
| | C156 | 044001600 | GUARNIZIONE | GASKET |
| | C157 | 2-71363 | VITE STEI M6X25 | SCREW M6X25 |
| | C160 | 4-602950 | RIGHELLO | RULER |
| | | | | |
| | | | | |
| | | | | |

RS= RICAMBI CONSIGLIATI / RECOMMENDED SPARES

AGGIORNAMENTI / UPDATE:





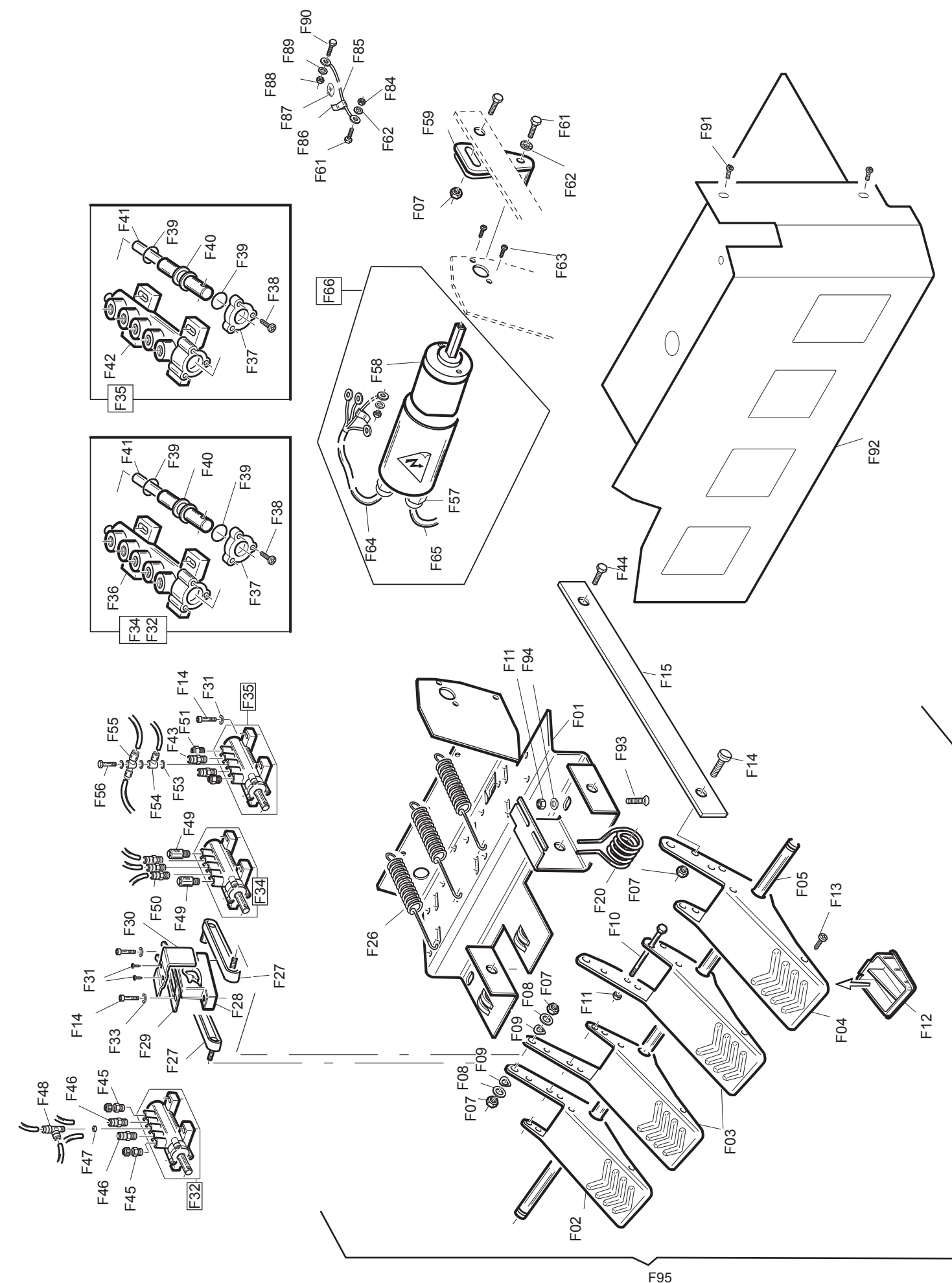
| | | |
|--|---------------|------------------------------------|
| | TAV. E | STALLONATORE / BEAD BREAKER |
|--|---------------|------------------------------------|

| RS | REF | COD. | DESCRIZIONE | DESCRIPTION |
|----|----------|--------------|-------------------------------------|-------------------------------------|
| | E01 | 3-00221 | RACCORDO L T8 | UNION L T8 |
| | E02 | 3-00082 | RACCORDO RIDUZIONE | UNION |
| | E03 | 041301500 | CAMICIA CILINDRO STALLONATORE | BEAD BREAKER CYLINDER LINER |
| | E04 | 042602800 | DADO ESAGONALE 1/4" | NUT |
| | E05 | 2-02795 | DADO M6 | NUT M6 |
| | E06 | 2-00211 | RONDELLA | WASHER |
| | E07 | 044003600 | GUARNIZIONE | LIPPED GASKET |
| | E08 | 047100600 | PISTONE CILINDRO STALLONATORE | BEAD BREAKER PISTON |
| | E10 | 2-00656 | DADO M18X1,5 | NUT M18 |
| | E11 | 044003700 | GUARNIZIONE OR | O-RING |
| | E12 | 043401600 | FLANGIA CILINDRO STALLONATORE | FLANGE |
| | E13 | 2-00310 | VITE M6X20 | SCREW M6X20 |
| | E14 | 040303000 | ANELLO GUIDA STELO | PIN GUIDE BUSH |
| | E15 | 044000300 | GUARNIZIONE A LABBRO | GASKET |
| | E16 | 047806400 | RONDELLA | WASHER |
| | E17 | 040302900 | ANELLO SEEGER INTERNO | SEEGER RING |
| RS | E18 | 08900600 | TAMPONE AMMORTIZZATORE | ABSORBER PLUG |
| | E19 | 2-00215 | RONDELLA | WASHER |
| | E20 | 2-01105 | VITE M14X100 | SCREW M14X100 |
| | E21 | 005200500 | POMOLO A SFERA | SPHERIC HANDLE |
| | E22 | 007204300 | PROTEZIONE PALETTA | BEAD BREAKER BLADE PROTECTION |
| | E23 | 005200211 | POMOLO A PRESSIONE D14 | HANDLE |
| | E24 | 126100400 | PALETTA STALLONATRICE | BEAD BREAKER BLADE |
| | E25 | 006503900 | PERNO | PIN |
| | E26 | 4-600955/90 | BLOCCHETTO REGOLABILE | ADJUSTABLE BLADE SUPPORT |
| | E27 | 2-02706 | DADO M14 | NUT M14 |
| | E28 | 4-600954B/90 | BRACCIO STALLONATORE | BEAD BREAKER ARM |
| | E29 | 000103300 | ADESIVO PERICOLO | DANGER ADHESIVE |
| | E30 | 2-01174 | DADO M18 | NUT M18 |
| RS | E31 | 005600700 | MOLLA BRACCIO STALLONATORE | BEAD BREAKER SPRING |
| | E32 | 2-00941 | DADO M14 | NUT M14 |
| | E33 | 431864 | VITE FISSAGGIO CILINDRO | SCREW |
| | E34 | 4-602242 | STELO CILINDRO STALLONATORE | CYLINDER SHAFT |
| | E35 | 2-00444 | VITE TE M14X80 | SCREW M14X80 |
| | E36 | 2-002706 | DADO M14 | NUT M14 |
| | E37 | 061802400 | CILINDRO DOPPIO EFFETTO | COMPLETE BEAD BREAKER CYLINDER |
| | (#4) E37 | 5-600428 | CILINDRO DOPPIO EFFETTO | COMPLETE BEAD BREAKER CYLINDER |
| | E38 | 047801800 | RONDELLA | WASHER |
| | E39 | 5-600426 | VALVOLA SCARICO RAPIDO | QUICK RELEASE |
| | (#4) E40 | 3-00464 | RACCORDO | UNION |
| | (#4) E41 | 109800200 | VALVOLA | VALVE |
| | (#4) E42 | 043300100 | SILENZIATORE | SOUND REDUCING |
| RS | E43 | 900238212 | KIT GUARNIZIONI CILINDRO STALL D.E. | COMPLETE BEAD BREAK. CYLIND. GASKET |
| | E45 | 2-71325 | VITE TE M16x120 | SCREW TE M16x120 |
| | E46 | 2-01045 | RONDELLA D. 16 | WASHER D. 16 |
| | E47 | 2-71526 | DADO M16 | NUT M16 |
| | | | | |
| | | | | |
| | | | | |
| | | | | |
| | | | | |

RS= RICAMBI CONSIGLIATI / RECOMMENDED SPARES

AGGIORNAMENTI / UPDATE:

(#4): dalla matricola 091160030 alla matricola 120560001 / from s.n. 091160030 to s.n. 120560001

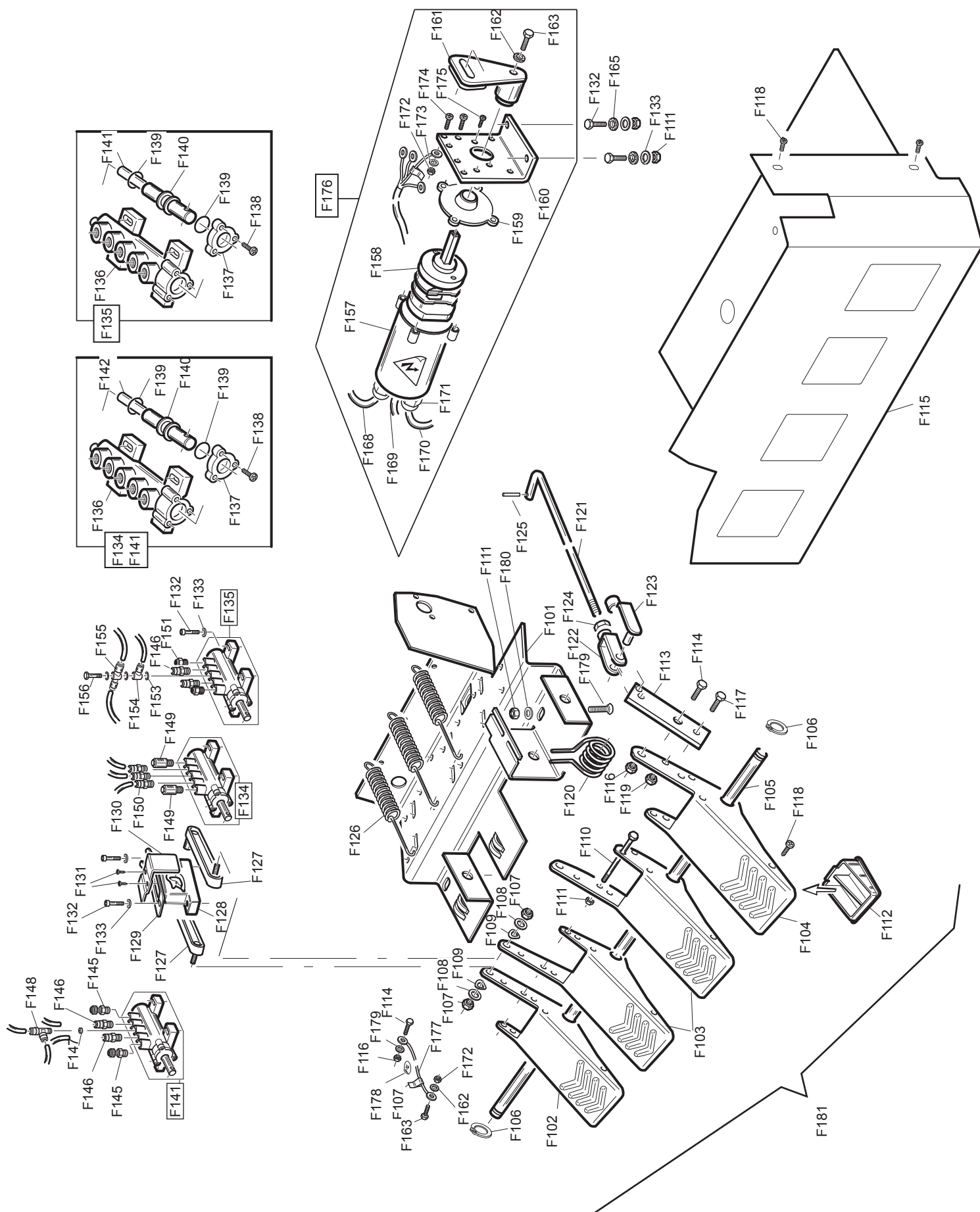


| | | |
|--|---------------|---|
| | TAV. F | PEDALIERA 1 VEL. MONOFASE / PEDAL UNIT 1 SPEED |
|--|---------------|---|

| RS | REF | COD. | DESCRIZIONE | DESCRIPTION |
|---|------|--------------|---|-----------------------------------|
| | F01 | 4-601961 | BASAMENTO PEDALIERA 4P. | PEDAL BRACKET 4P. |
| | F02 | 006402362 | PEDALE (SX) | PEDAL (L) |
| | F03 | 006402162 | PEDALE (DX) | PEDAL (R) |
| | F04 | 4-602030 | PEDALE INVERTITORE (DX) | PHASE REVERSE PEDAL (R) |
| | F05 | 006508700 | PERNO FULCRO PEDALI | PEDAL PIN |
| | F07 | 2-01137 | DADO M8 AUTOBLOCCANTE | LOCKNUT M8 |
| | F08 | 2-00212 | ROSETTA Ø8 X 17 X 1,5 | WASHER |
| | F09 | 2-02247 | ROSETTA ELASTICA ONDULATA Ø8 X 15 | WASHER Ø8 X 15 |
| | F10 | 2-00717 | VITE TE M6 X 60 | SCREW M6 X 60 |
| | F11 | 2-01979 | DADO M6 AUTOBLOCCANTE | LOCKNUT M6 |
| | F12 | 009005000 | TAPPO PER PEDALE INVERTITORE | PHASE REVERSE PEDAL CUP |
| | F13 | 2-02888 | VITE AUTOFILETTANTE 4,2X9,5 | SCREW |
| | F14 | 2-00310 | VITE TCEI M6 X 20 | SCREW M6 |
| | F15 | 000901100 | BIELLA COMANDO INVERTITORE | REVERSE CONNECTING ROD |
| RS | F20 | 4-602883 | MOLLA COMANDO PEDALE INVERTITORE | REVERSE PEDAL SPRING |
| RS | F26 | 005606100 | MOLLA RITORNO PEDALI | PEDAL SPRING |
| | F27 | 000900700 | BIELLA PER CAMMA | CONNECTING ROD |
| | F28 | 900001400211 | CAMMA DOPPIA CON FORO | DOUBLE CAM |
| RS | F29 | 005600900 | MOLLA BALESTRA A FORCELLA | FORK LEAF SPRING |
| | F30 | 004101000 | GUIDA BIELLA | CONNECTING ROD GUIDE BRACKET |
| | F31 | 2-02415 | VITE AUTOFILETTANTE 2,9 X 9,5 | SELF-TAPPING SCREW |
| | F32 | 089803000 | VALVOLA PALO SENZA RACCORDI | VALVE WITHOUT UNIONS |
| RS | F32A | 069803700 | VALVOLA PALO CON RACCORDI | VALVE WITH UNIONS |
| | F33 | 2-00211 | ROSETTA Ø6 X 12 | WASHER |
| | F34 | 089803000 | VALVOLA AUTOCENTR SENZA RACCORDI | VALVE WITHOUT UNIONS |
| RS | F34A | 069803800 | VALVOLA AUTOCENTR CON RACCORDI | VALVE WITH UNIONS |
| | F35 | 089802900 | VALVOLA CILINDRO DE SENZA RACCORDI | VALVE WITHOUT UNIONS |
| RS | F35A | 069803900 | VALVOLA CILINDRO DE CON RACCORDI | VALVE WITH UNIONS |
| | F36 | 002301600 | CORPO VALVOLA DISTRIBUTRICE | VALVE BODY |
| | F37 | 003401100 | FLANGIA PER VALVOLA DISTRIBUTRICE | VALVE FLANGE |
| | F38 | 2-02887 | VITE AUTOFILETTANTE 3,5 X 13 - UNI 6594 | SELF TAPPING 3,5 X 13 |
| | F39 | 044001400 | GUARNIZIONE OR 17,5 X 3,85 | O-RING 17,5 X 3,85 |
| | F40 | 002701200 | DISTANZ PER VALVOLA DISTRIBUTRICE | DISTANCE RING |
| | F41 | 008702100 | STELO PER VALVOLA DISTRIBUTRICE | VALVE SPINDLE |
| | F42 | 002301500 | CORPO VALVOLA DISTRIBUTRICE DE | DE VALVE BODY |
| | F43 | 3-00459 | RACCORDO D 1/4 T8 | UNION 1/4 T8 |
| | F44 | 2-00310 | VITE TE M6 X 20 | SCREW M6 |
| | F45 | 047507400 | RACCORDO REGOLATORE SILENZIAT. 1/8" | SILENCER WITH OUTLER ADJUSTM 1/8" |
| | F46 | 3-00461 | RACCORDO S. RAPIDO 1/8" - 6 - 6510 | UNION 1/8" - 6 - 6510 |
| | F47 | 001006800 | BOCCOLA STROZZATRICE 1/8" | BUSH 1/8" |
| | F48 | 3-00063 | RACCORDO A "T" 1/8" - 6 - 6440 | UNION "T" 1/8" - 6 - 6440 |
| | F49 | 043300300 | SILENZIATORE 1/8" M1 SFE 2901 | SILENCER 1/8 |
| | F50 | 3-00464 | RACCORDO S. RAPIDO 1/8" - 8 - 6510 | UNION 1/8" - 8 - 6510 |
| | F51 | 4-600053 | SILENZIATORE 1/4 | SILENCER 1/4 |
| | F53 | 047802400 | RONDELLA IN PLASTICA 1/8" | PLASTIC WASHER 1/8" |
| | F54 | 3-00434 | RACCORDO 1/4 - T6 | UNION 1/4" - 6 |
| | F55 | 3-00441 | RACCORDO 1/4" - T8 | UNION 1/4" - 8 |
| | | | | |
| | | | | |
| RS= RICAMBI CONSIGLIATI / RECOMMENDED SPARES | | | | |

AGGIORNAMENTI / UPDATE:

(#5): fino alla matricola \ up to serial number 110260001



| | | |
|--|----------------|--|
| | TAV. F1 | PEDALIERA 2 VELOCITÀ / PEDAL UNIT 2 SPEED |
|--|----------------|--|

| RS | REF | COD. | DESCRIZIONE | DESCRIPTION |
|---|-----------|--------------|---|----------------------------------|
| | F101 | 4-601961 | BASAMENTO PEDALIERA 4P. | PEDAL BRACKET 4P. |
| | F102 | 006402362 | PEDALE (SX) | PEDAL (L) |
| | F103 | 006402162 | PEDALE (DX) | PEDAL (R) |
| | F104 | 4-602030 | PEDALE INVERTITORE (DX) | PHASE REVERSE PEDAL (R) |
| | F105 | 006508700 | PERNO FULCRO PEDALI | PEDAL PIN |
| | F106 | 040300700 | SEEGER | SEEGER |
| | F107 | 2-01137 | DADO M8 AUTOBLOCCANTE | LOCKNUT M8 |
| | F108 | 2-00212 | ROSETTA Ø8 X 17 X 1,5 | WASHER |
| | F109 | 2-02247 | ROSETTA ELASTICA ONDULATA Ø8 X 15 | WASHER Ø8 X 15 |
| | F110 | 2-00717 | VITE TE M6 X 60 | SCREW M6 X 60 |
| | F111 | 2-01979 | DADO M6 AUTOBLOCCANTE | LOCKNUT M6 |
| | F112 | 009005000 | TAPPO PER PEDALE INVERTITORE | PHASE REVERSE PEDAL CUP |
| | F113 | 004902700 | LEVA PROLUNGA PEDALE INVERTITORE 2V | PEDAL LEVER 2 SPEED |
| | F114 | 2-00372 | VITE TE M8 X 16 | SCREW M8 X 16 |
| | F115 | 4-601062A | COFANO PEDALIERA | PEDAL COVER |
| | F116 | 2-00723 | DADO M8 MEDIO | NUT M8 |
| | F117 | 2-00361 | VITE TE M6 X 16 | SCREW M6 X 16 |
| | F118 | 2-02888 | VITE VATBIC D4,2X9,5 | SCREW D4,2X9,5 |
| | (#6) F118 | 2-00361 | VITE TE M6x16 | SCREW M6x16 |
| | F119 | 2-00146 | DADO M6 MEDIO | NUT M6 |
| RS | F120 | 4-602883 | MOLLA COMANDO PEDALE INVERTIT 2V | REVERSE PEDAL SPRING 2V |
| | F121 | 4-600944 | LEVA RINVIO INVERTITORE | INVERTER LEVEL |
| | F122 | 2-94013 | FORCELLA M6 | FORK M6 |
| | F123 | 2-94014 | CLIPS | CLIPS |
| | F124 | 2-00146 | DADO M6 MEDIO | NUT M6 |
| | F125 | 2-02522 | COPIGLIA | SPLIT PIN |
| RS | F126 | 005606100 | MOLLA RITORNO PEDALI LAMIERA | PEDAL SPRING |
| | F127 | 000900700 | BIELLA PER CAMMA | CONNECTING ROD |
| | F128 | 900001400211 | CAMMA DOPPIA CON FORO | DOUBLE CAM |
| RS | F129 | 005600900 | MOLLA BALESTRA A FORCELLA | FORK LEAF SPRING |
| | F130 | 004101000 | GUIDA BIELLA | CONNECTING ROD GUIDE BRACKET |
| | F131 | 2-02415 | VITE AUTOFILETTANTE 2,9 X 6,4 | SELF-TAPPING SCREW |
| | F132 | 2-00310 | VITE TCEI M6 X 20 | SCREW M6 |
| | F133 | 2-00211 | ROSETTA Ø6 | WASHER |
| | F134 | 089803000 | VALVOLA AUTOCENTR SENZA RACCORDI | VALVE WITHOUT UNIONS |
| RS | F134A | 069803800 | VALVOLA AUTOCENTR CON RACCORDI | VALVE WITH UNIONS |
| | F135 | 089802900 | VALVOLA CILINDRO DE SENZA RACCORDI | VALVE WITHOUT UNIONS |
| RS | F135A | 069803900 | VALVOLA CILINDRO DE CON RACCORDI | VALVE WITH UNIONS |
| | F136 | 002301600 | CORPO VALVOLA DISTRIBUTRICE | VALVE BODY |
| | F137 | 003401100 | FLANGIA PER VALVOLA DISTRIBUTRICE | VALVE FLANGE |
| | F138 | 2-02887 | VITE AUTOFILETTANTE 3,5 X 12 - UNI 6594 | SELF TAPPING 3.5 X 12 |
| | F139 | 044001400 | GUARNIZIONE OR 17,5 X 3,85 | O-RING 17.5 X 3.85 |
| | F140 | 002701200 | DISTANZ PER VALVOLA DISTRIBUTRICE | DISTANCE RING |
| | F141 | 089803000 | VALVOLA PALO SENZA RACCORDI | VALVE WITHOUT UNIONS |
| RS | F141A | 069803700 | VALVOLA PALO CON RACCORDI | VALVE WITH UNIONS |
| | F142 | 002301500 | STELO PER VALVOLA DISTRIBUTRICE | VALVE SPINDLE |
| | F145 | 047507400 | RACCORDO REGOLATORE SILENZIAT. 1/8" | SILENCER WITH OUTLER ADJUSTM1/8" |
| | F146 | 3-00459 | RACCORDO S. RAPIDO 1/8" - T6 | UNION 1/8" - T6 |
| | | | | |
| | | | | |
| | | | | |
| RS= RICAMBI CONSIGLIATI / RECOMMENDED SPARES | | | | |

AGGIORNAMENTI / UPDATE:

(#6): fino alla matricola \ up to serial number 110260001

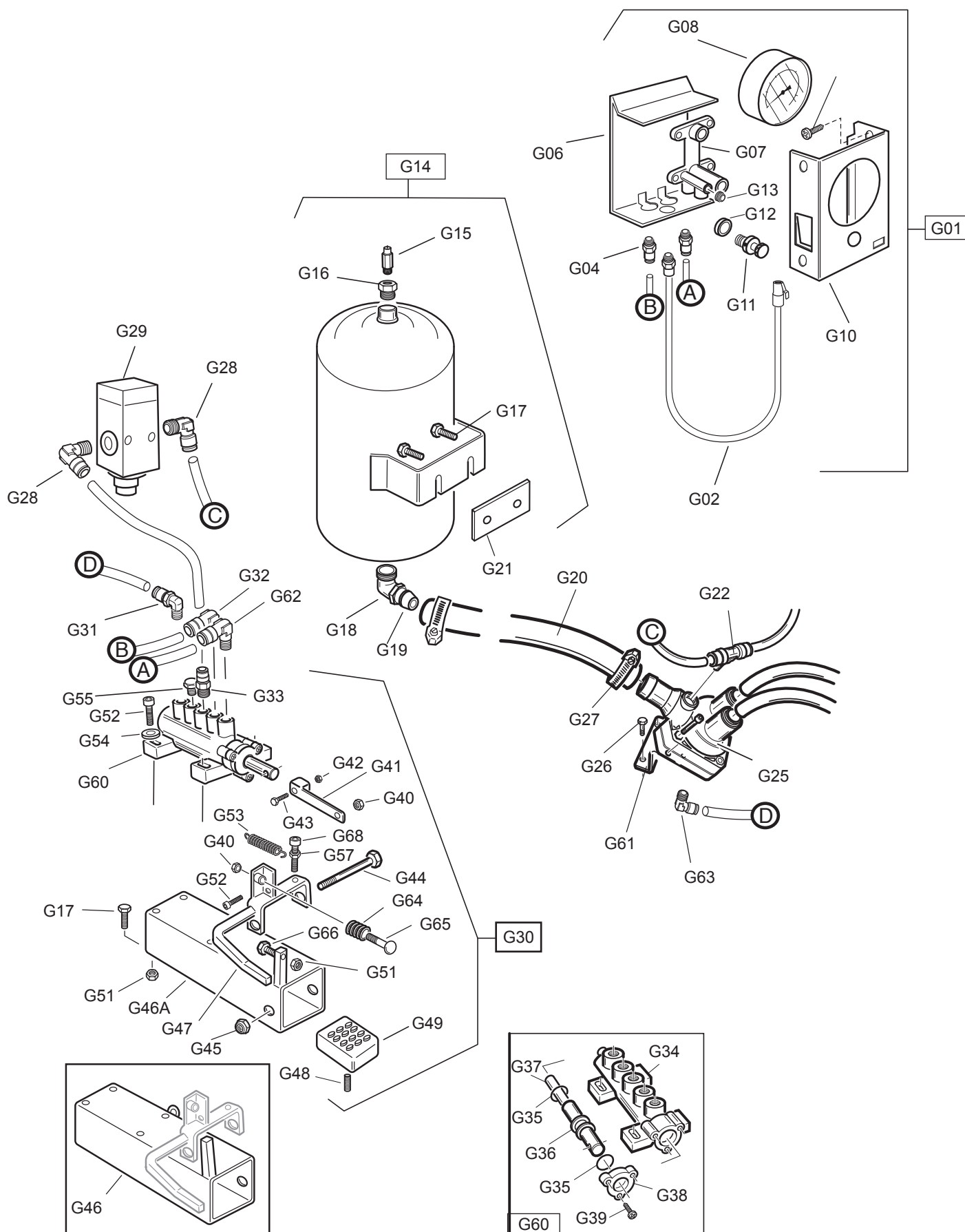
| | | |
|--|---------|---|
| | TAV. F1 | PEDALIERA 2 VELOCITÀ / PEDAL UNIT 2 SPEED |
|--|---------|---|

[illegible]

RS= RICAMBI CONSIGLIATI / RECOMMENDED SPARES

AGGIORNAMENTI / UPDATE:

(#6): fino alla matricola \ up to serial number 110260001

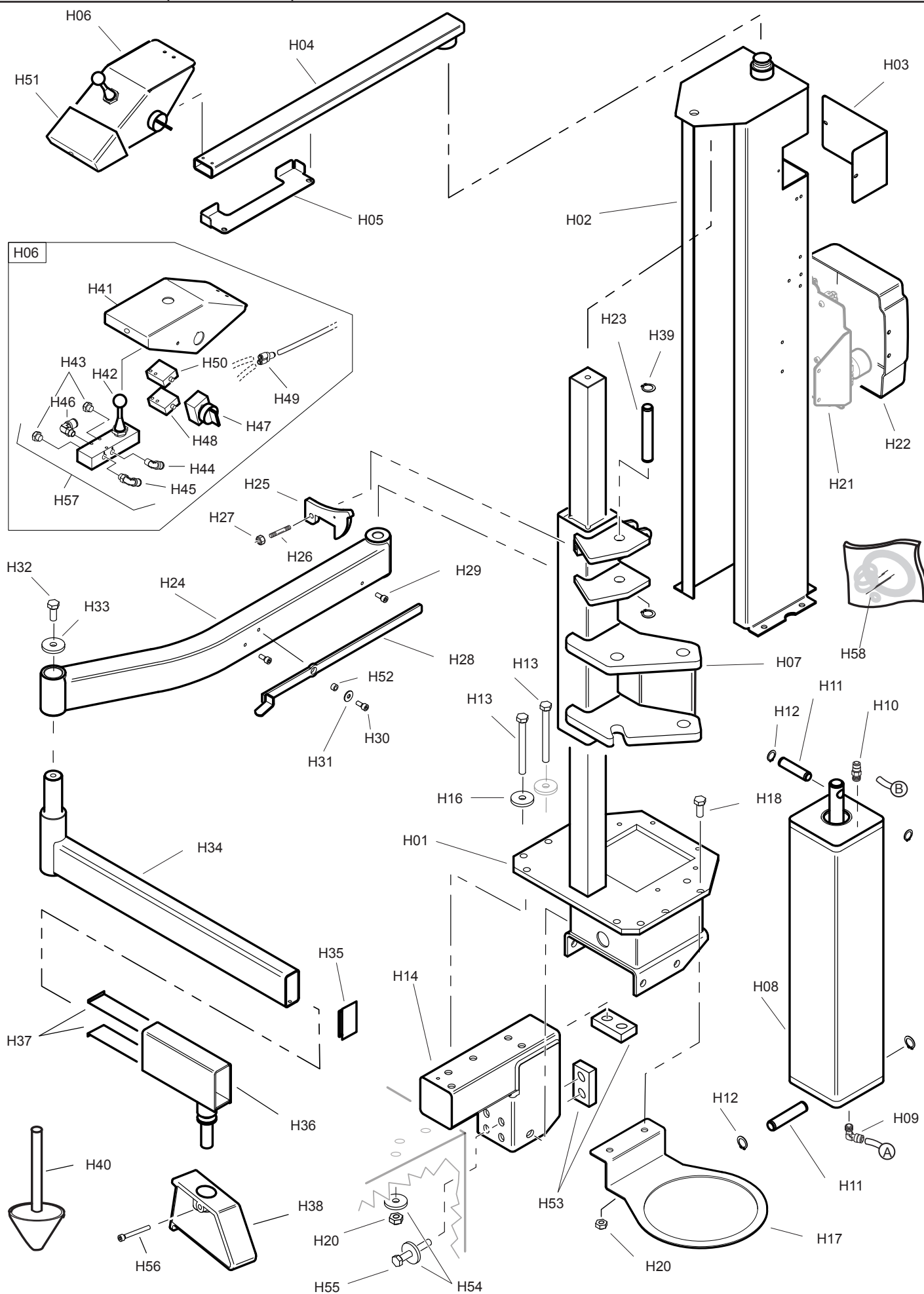


| | | |
|--|---------------|--|
| | TAV. G | UNITA' DI GONFIAGGIO T.I. / T.I. UNIT |
|--|---------------|--|

| RS | REF | COD. | DESCRIZIONE | DESCRIPTION |
|---|----------|--------------|--------------------------------|-----------------------------|
| | G01 | 063967260 | GRUPPO LETTURA GONFIAGGIO | COMPLETE INFLATING UNIT |
| RS | G02 | 069403800 | TUBO USCITA ARIA T.I. | AIR HOSE TI |
| | G04 | 3-00464 | RACCORDO D T8 | UNION T8 |
| | G06 | 004815860 | LAMIERA POSTERIORE SCAT. GONF | REAR BOX |
| | G07 | 009800700 | RIPARTITORE CENTR. GONFIAGGIO | DISTRIBUTION FRAME |
| RS | G08 | 045300200 | MANOMETRO CE D.80 | MANOMETER CE D90 |
| | G10 | 004815760 | LAMIERA ANTERIORE SCAT. GONF | FRONT BOX |
| | G11 | 109800700 | VALVOLA PULSANTE SGONF | PUSH BUTTON |
| | G12 | 047802400 | RONDELLA | WASHER |
| | G13 | 3-00198 | RACCORDO TAPPO | PLUG UNION |
| | G14 | 4-600032 | SERBATOIO T.I. | TANK TI |
| | G15 | 3-01889 | VALVOLA SICUR.3/8 | SECURITY VALVE |
| | G16 | 3-01890 | RIDUZIONE ACC. ZINC 1/2 3/8 | UNION 1/2 - 3/8 |
| | G17 | 2-00372 | VITE TE M 8X 16 | SCREW M 8X16 |
| | G18 | 3-01891 | ANGOLO ZINC. MF 1" | UNION 1" |
| | G19 | 3-01892 | ATTACCO RESCA ZINCATO | GALVANIZED UNION |
| RS | G20 | 049414700 | TUBO 1" 10 BAR T37 | HOSE 1" 10 BAR T37 |
| | G21 | 4-600031-1 | PIATTO | PLATE |
| | G22 | 3-01350 | RACCORDO -T-T8 | UNION T T8 |
| | G25 | 109803800 | VALVOLA GONFIAGGIO | VALVE |
| | G26 | 2-00361 | VITE TE M 6X 16 | SCREW M6X16 |
| RS | G27 | 042801600 | FASCETTA D.14 | LOCKING BAND |
| | G28 | 3-00221 | RACCORDO -L-T8 | UNION L T8 |
| | G29 | 049802100 | VALVOLA LIMITATR.4,2 BAR GONF. | PRESSURE REGULATOR 4,2 BAR |
| | G29 | 063984100 | VALVOLA LIMITATRICE COMPLETA | COMPLETE PRESSURE REGULATOR |
| | G30 | 063932700 | GRUPPO PEDALE T.I. | T.I. COMPLETE PEDAL |
| | G31 | 3-00219 | RACCORDO -L-T6 | UNION L T6 |
| | G32 | 3-00218 | RACCORDO-L-T8 | UNION L T8 |
| | G33 | 3-00464 | RACCORDO -D-T8 | UNION D T8 |
| | G34 | 002300100 | CORPO VALVOLA DISTRIBUTR. 1/8" | VALVE BODY |
| | G35 | 044001400 | OR 9,8 X 3,85 | O-RING |
| | G36 | 002701200 | DISTANZIALE VALVOLA | DISTANCE RING |
| | G37 | 008701100 | STELO VALVOLA DISTRIBUTRICE T | VALVE SPINDLE |
| | G38 | 003401100 | FLANGIA VALVOLA | VALVE FLANGE |
| | G39 | 2-02887 | VITE ATBIC D3,5X12,7 | SCREW D3.5X12.7 |
| | G40 | 2-01979 | DADO M 6 | NUT M6 |
| | G41 | 000900800 | BIELLA COMANDO VALVOLA | CONNECTING ROD |
| | G42 | 2-02883 | DADO M 4 | NUT M4 |
| | G43 | 2-02620 | VITE TE M 4X 30 | SCREW M4X30 |
| | G44 | 2-01285 | VITE TE M12X 85 | SCREW M 12X85 |
| | G45 | 2-01276 | DADO M12 | NUT M12 |
| | (#7) G46 | 900128800100 | SUPPORTO PEDALE T.I. | PEDAL SUPPORT |
| | G46A | 4-602185 | SUPPORTO PEDALE T.I | PEDAL SUPPORT |
| | G47 | 126400100 | PEDALE T.I. | T.I. PEDAL |
| | G48 | 2-00528 | VITE STEI M 6X 8 | SCREW M6X8 |
| | G49 | 006401100 | PEDALE IN PLASTICA | PLASTIC PEDAL |
| | | | | |
| | | | | |
| | | | | |
| | | | | |
| RS= RICAMBI CONSIGLIATI / RECOMMENDED SPARES | | | | |

AGGIORNAMENTI / UPDATE:

(#7): fino alla matr. / up to serial number 100960206



| | | |
|--|---------------|---------------------------------|
| | TAV. H | STRUTTURA TPH / TPH UNIT |
|--|---------------|---------------------------------|

| RS | REF | COD. | DESCRIZIONE | DESCRIPTION |
|---|-----------|--------------|---------------------------------|------------------------|
| | H01 | 4-601905/90 | BASAMENTO TPH | TPH SUPPORT |
| | (#10) H02 | 4-602118A/34 | CARTER STRUTTURALE | STRUCTURAL CASE |
| | H02 | 4-602526/34 | CARTER STRUTTURALE | STRUCTURAL CASE |
| | H03 | 4-600191/34 | COPERCHIO POSTERIORE | BACK COVER |
| | (#10) H04 | 4-602037B/90 | BRACCIO COMANDI | ARM |
| | H04 | 4-602037C/90 | BRACCIO COMANDI | ARM |
| | H05 | 4-601932/41 | CONTENITORE LEVETTA | LEVER SUPPORT |
| | (#11) H06 | 5-600439 | CONSOLLE DI COMANDO | CONTROL PANEL |
| | H06 | 5-600620 | CONSOLLE DI COMANDO | CONTROL PANEL |
| | (#8) H07 | 4-601871A/90 | SUPPORTO SCORREVOLE DX | RIGHT SLIDE SUPPORT |
| | (#9) H07 | 4-601871B/90 | SUPPORTO SCORREVOLE DX | RIGHT SLIDE SUPPORT |
| | H07 | 4-601871C/90 | SUPPORTO SCORREVOLE DX | RIGHT SLIDE SUPPORT |
| | H08 | 061804000 | CILINDRO PRESSORI D. 100 | CYLINDER |
| | H09 | 3-00219 | RACCPN. L G1/8CG - T6 | UNION L G1/8 - T6 |
| | H10 | 3-00461 | RACCPN. D G1/8G - T6 | UNION D G1/8 - T6 |
| | H11 | 006513300 | PERNO INFERIORE FULCRO CILINDRO | CYLINDER PIN |
| | H12 | 2-00026 | ANELLO EL. D14 | SEEGER D.14 |
| | H13 | 2-01065 | VITE TE M10X110 | SCREW M10X110 |
| | H14 | 4-601867/90 | STAFFA DI FISSAGGIO SU CARCASSA | BRACKET |
| | H16 | 2-00213 | RONDELLA D.10 | WASHER D10 |
| | H17 | 4-601886/90 | PORTAGRASSO | GREASE SUPPORT |
| | H18 | 2-00380 | VITE TE M10X25 | SCREW M10X25 |
| | H20 | 2-91726 | DADO ES. N. M10 | NUT M10 |
| | H21 | 5-600443 | CENTRALINA PNEUMATICA | PNEUMATIC CONTROL UNIT |
| | H22 | 4-601899 | CARTER CENTRALINA | CONTROL UNIT CASE |
| | H23 | 006500200 | PERNO FULCRO BRACCIO | PIN |
| | H24 | 4-601896/90 | BRACCIO ANGOLATO | ARM |
| | (#9) H25 | 5-600450 | GANCIO DI BLOCCAGGIO BRACCIO | HOOK |
| | H25 | 5-600450A | GANCIO DI BLOCCAGGIO BRACCIO | HOOK |
| | (#9) H26 | 2-02925 | VITE PRIGIONIERO M8x30 | SCREW |
| | H26 | 2-80097 | VITE PRIGIONIERO M10x30 | SCREW |
| | (#9) H27 | 2-01137 | DADO ES. AUTOBL M8 | SELF LOCKING NUT M8 |
| | H27 | 2-071525 | DADO ES. AUTOBL M10 | SELF LOCKING NUT M8 |
| | H28 | 4-600494-1 | LEVA DI SGANCIO | LEVER |
| | H29 | 2-00308 | VITE TCEI M6X10 | SCREW M6X10 |
| | H30 | 2-00728 | VITE TCEI M6X14 | SCREW M6X14 |
| | H31 | 2-00679 | ROSETTA D.6 | WASHER D.6 |
| | H32 | 2-00379 | VITE TE M10X20 | SCREW M10X20 |
| | H33 | 2-02947 | ROSETTA D.10 | WASHER D.10 |
| | H34 | 4-600401-1 | BRACCIO PREMITALLONE | ARM |
| | H35 | 3-01555 | TAPPO | CAP |
| | H36 | 128807900 | SUPPORTO PREMITALLONE | SUPPORT |
| | H37 | 008400700 | SLITTA SCORREVOLE UTENSILE | SLIDE |
| | | | | |
| | | | | |
| | | | | |
| | | | | |
| RS= RICAMBI CONSIGLIATI / RECOMMENDED SPARES | | | | |

AGGIORNAMENTI / UPDATE:

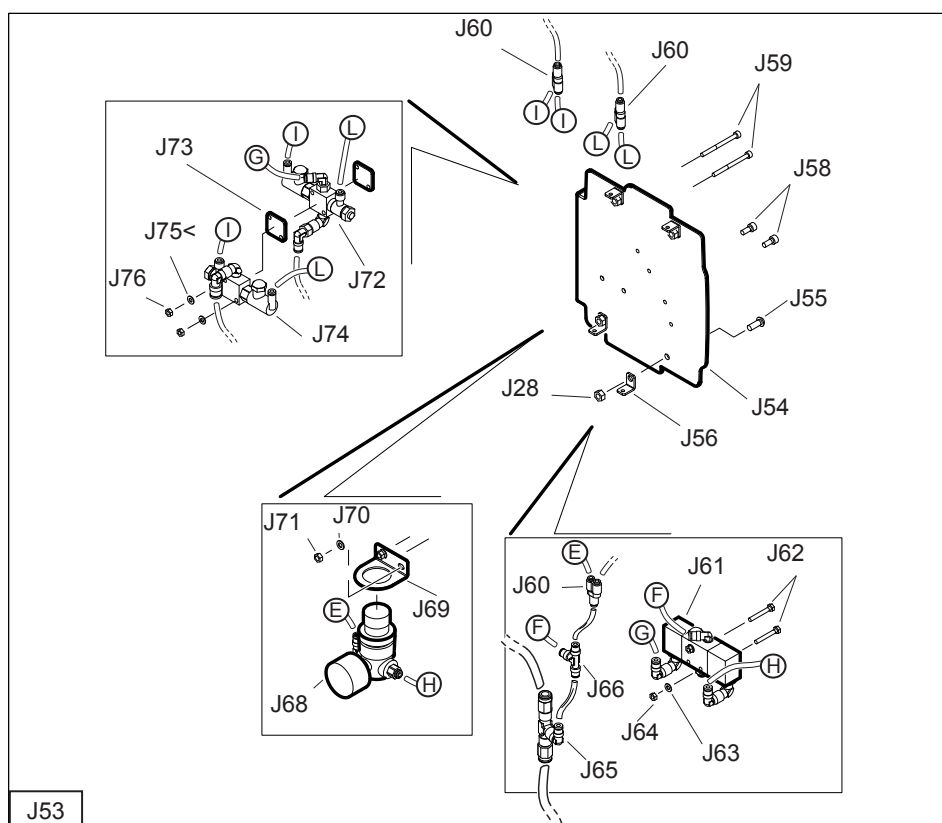
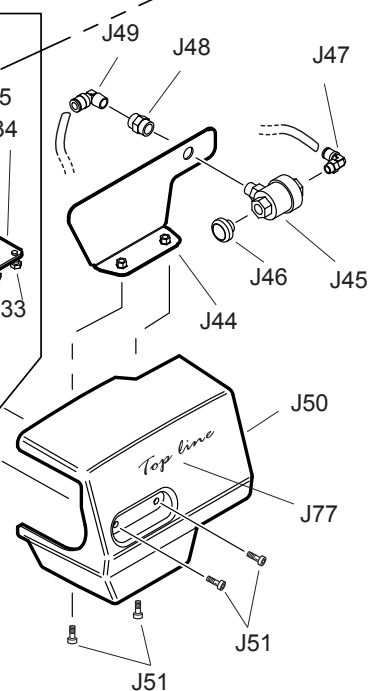
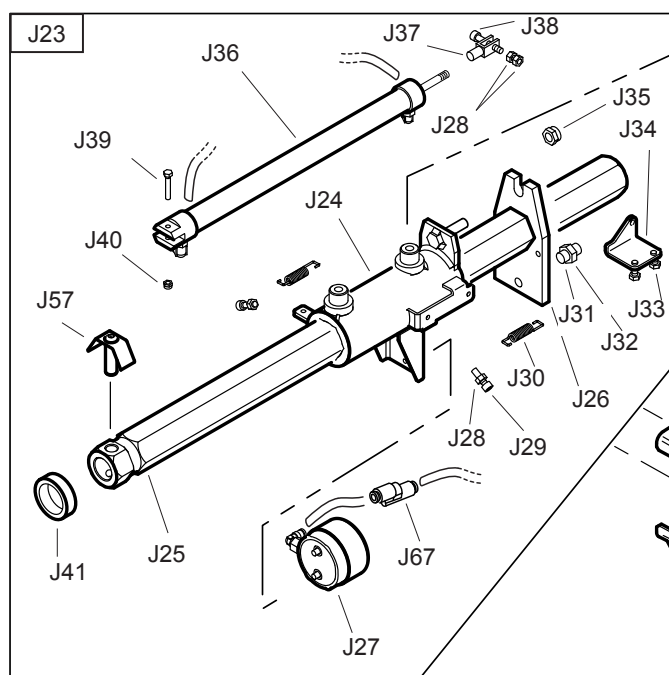
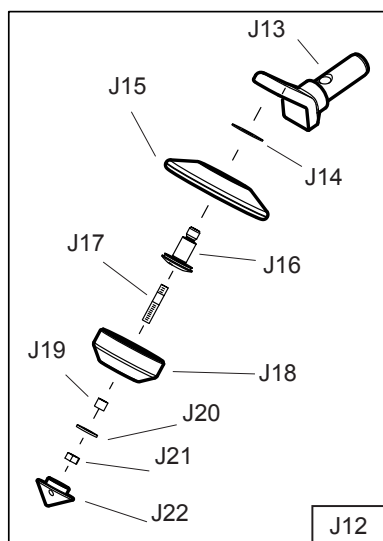
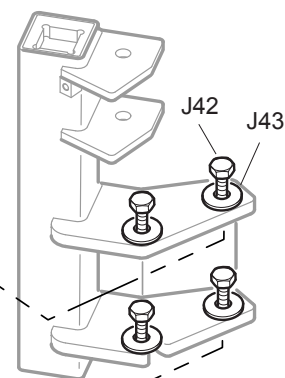
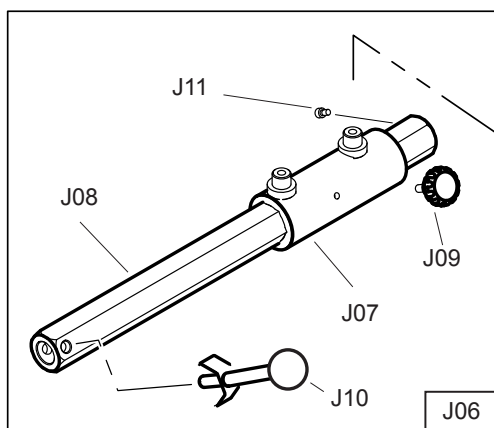
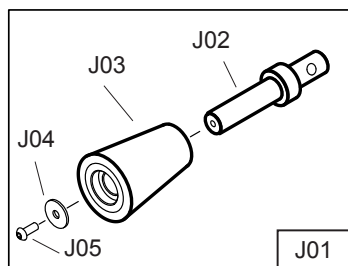
(#8): fino alla matricola / up to serial number 101160232
 (#9): fino alla matricola / up to serial number 110560042
 (#10): fino alla matricola / up to serial number 110660429
 (#11): fino alla matricola / up to serial number 110560196
 (#12): dalla matricola / from serial number 110560197

| | | |
|--|--------|--------------------------|
| | TAV. H | STRUTTURA TPH / TPH UNIT |
|--|--------|--------------------------|

[illegible]

AGGIORNAMENTI / UPDATE:

(#8): fino alla matricola / up to serial number 101160232
 (#9): fino alla matricola / up to serial number 110560042
 (#10): fino alla matricola / up to serial number 110660429
 (#11): fino alla matricola / up to serial number 110560196
 (#12): dalla matricola / from serial number 110560197



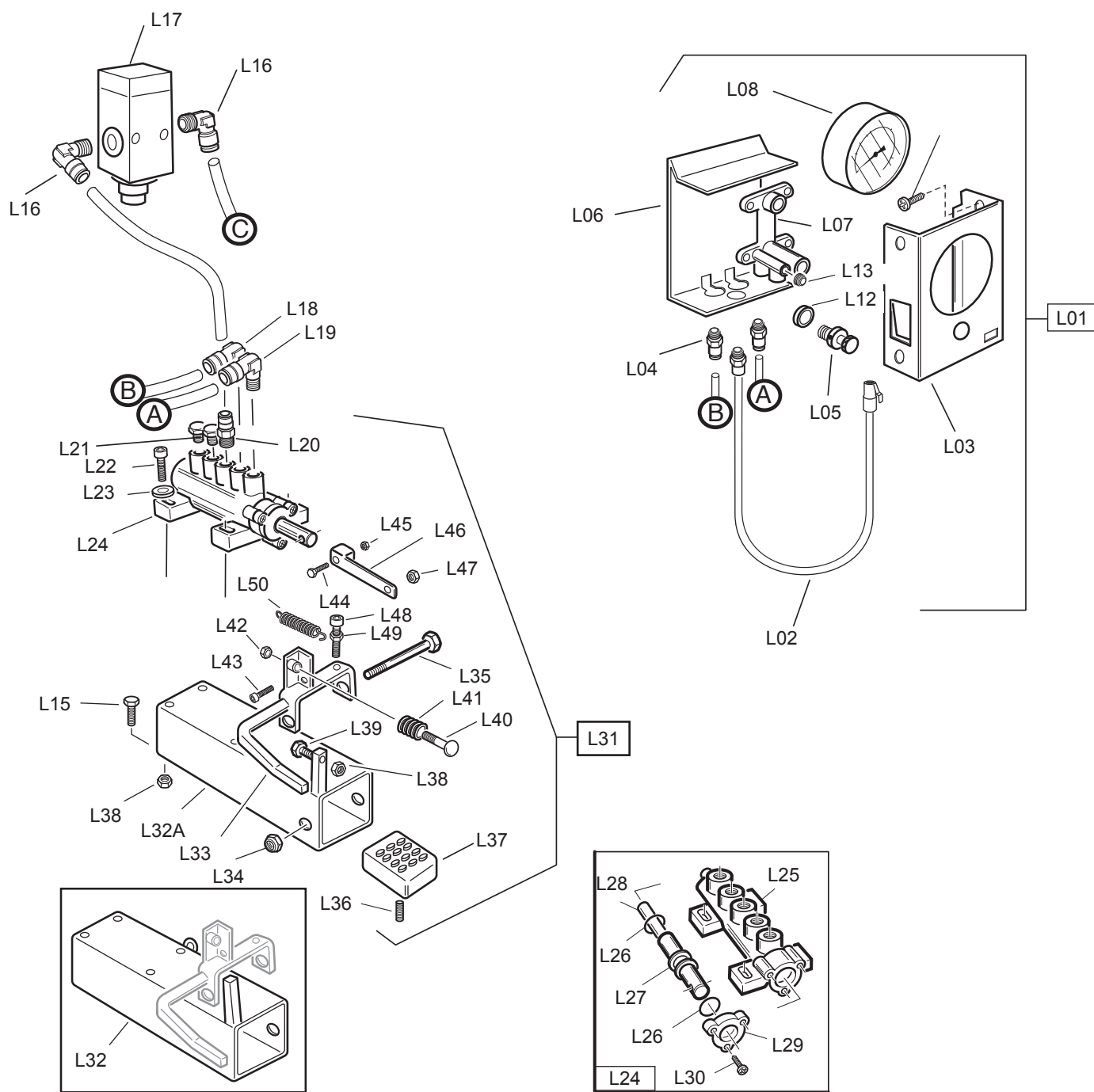
| | | |
|--|---------------|--|
| | TAV. J | BRACCI E CENTRALINA TPH / ARMS AND TPH CONTROL UNIT |
|--|---------------|--|

| RS | REF | COD. | DESCRIZIONE | DESCRIPTION |
|----|-----------|--------------|----------------------------------|-----------------------------|
| | J01 | 063910000 | RULLO PREMITALLONE COMPLETO | COMPLETE ROLLER |
| | J02 | 4-602680 | PERNO PER RULLO | ROLLER PIN |
| | (#13) J03 | 007902600 | RULLO PREMITALLONE | ROLLER |
| | J03 | 4-103215 | RULLO PREMITALLONE | ROLLER |
| | J04 | 047802200 | ROSETTA D8 | WASHER D.8 |
| | J05 | 2-02161 | VITE TBEI M8X20 | SCREW M8X20 |
| | J06 | 5-600436 | PREMITALLONE COMPLETO | BEAD PRESS DEVICE |
| | J07 | 4-601873A/90 | GUIDA PREMITALLONE | GUIDE |
| | J08 | 4-601857 | ASTA PREMITALLONE | BEAD PRESS SHAFT |
| | J09 | 045201400 | MANOPOLA A LOBI | HANDLE |
| | J10 | 5-600437 | PERNO BLOCCAGGIO CON POMOLO | LOCKER PIN |
| | J11 | 2-00308 | VITE TCEI M8X20 | SCREW M8X20 |
| | J12 | 5-600435 | DISCO ALZATALLONE COMPLETO | COMPLETE BEAD LIFTER ROLLER |
| | J13 | 4-601863 | SUPPORTO DISCO ALZATALLONE | SUPPORT |
| | J14 | 344208 | RONDELLA SPECIALE | WASHER |
| | J15 | 4-601869 | DISCO ALZATALLONE | ROLLER |
| | J16 | 4-601865 | PERNO PORTADISCO | PIN |
| | J17 | 2-02925 | PRIGIONIERO M8X30 | SCREW |
| | J18 | 4-601866 | TASTATORE | TOUCHER |
| | J19 | 4-601868 | BOCCOLA TASTATORE | BUSHING |
| | J20 | 2-01299 | ROSETTA D8 | WASHER D.8 |
| | J21 | 2-00723 | DADO ES N M8 | NUT M8 |
| | J22 | 4-601924 | PROLUNGA TASTATORE | CONE |
| | J23 | 5-600433 | ALZATALLONE COMPLETO | BEAD LIFTER DEVICE |
| | J24 | 4-601872/90 | GUIDA ALZATALLONE | GUIDE |
| | J25 | 4-601858A | ASTA ALZATALLONE | SHAFT |
| | J26 | 4-601885 | PIASTRA BLOCCAGGIO ALZATALLONE | LOCKING PLATE |
| | J27 | 5-600338 | CILINDRO BLOCCAGGIO | CYLINDER |
| | J28 | 2-00146 | DADO ES. N M6 | NUT M6 |
| | J29 | 2-00310 | VITE TCEI M6X20 | SCREW M6X20 |
| | J30 | 4-600538 | MOLLA RICHIAMO STRNAGOLO | SPRING |
| | J31 | 2-72012 | VITE STEI M12X25 | SCREW M12X25 |
| | J32 | 2-91640 | DADO ES. B M12 | NUT M12 |
| | J33 | 2-00361 | VITE TE M6X16 | SCREW M6X16 |
| | J34 | 4-601884 | STAFFA ATTACCO CILINDRO | BRACKET |
| | J35 | 2-71525 | DADO ES AUTOBLOC M10 | SELF LOCKING NUT M10 |
| | J36 | 5-600434 | CILINDRO BLOCCAGGIO STALLONATORE | CYLINDER |
| | J37 | 043500300 | FORCELLA M6 | FORK M6 |
| | J38 | 2-00909 | VITE TCEI M6X35 | SCREW M6X35 |
| | J39 | 2-00358 | VITE TE M5X30 | SCREW TE M5X30 |
| | J40 | 2-71524 | DADO ES. AUTOBLOC M5 | SELF LOCKING NUT M5 |
| | J41 | 000302800 | ANELLO AMMORTIZZATORE | SHOCK ADSORBER |
| | J42 | 2-00379 | VITE TE M10X20 | SCREW M10X20 |
| | J43 | 047800500 | ROSETTA D. 10 | WASHER D.10 |
| | J44 | 4-601918/90 | COPERCHIO ALZATALLONI | COVER |
| | J45 | 109800200 | VALVOLA SCARICO RAPIDO | VALVE |
| | J46 | 043300100 | SILENZIATORE 1/4 | SYLENCER |
| | J47 | 3-00053 | RACCPN LO G1/8 - T6 | UNION LO G1/8 - T6 |
| | J48 | 3-00101 | RACCPN MANICOTTO G1/4 | UNION G1/4 |
| | J49 | 3-00221 | RACCPN L G1/4 - T8 | UNION L G1/4 - T8 |

RS= RICAMBI CONSIGLIATI / RECOMMENDED SPARES

AGGIORNAMENTI / UPDATE:

(#13): fino alla matricola / up to serial number 120460370



| | | |
|--|---------------|---|
| | TAV. L | UNITA' DI GONFIAGGIO A PEDALE / PEDAL INFLATING UNIT |
|--|---------------|---|

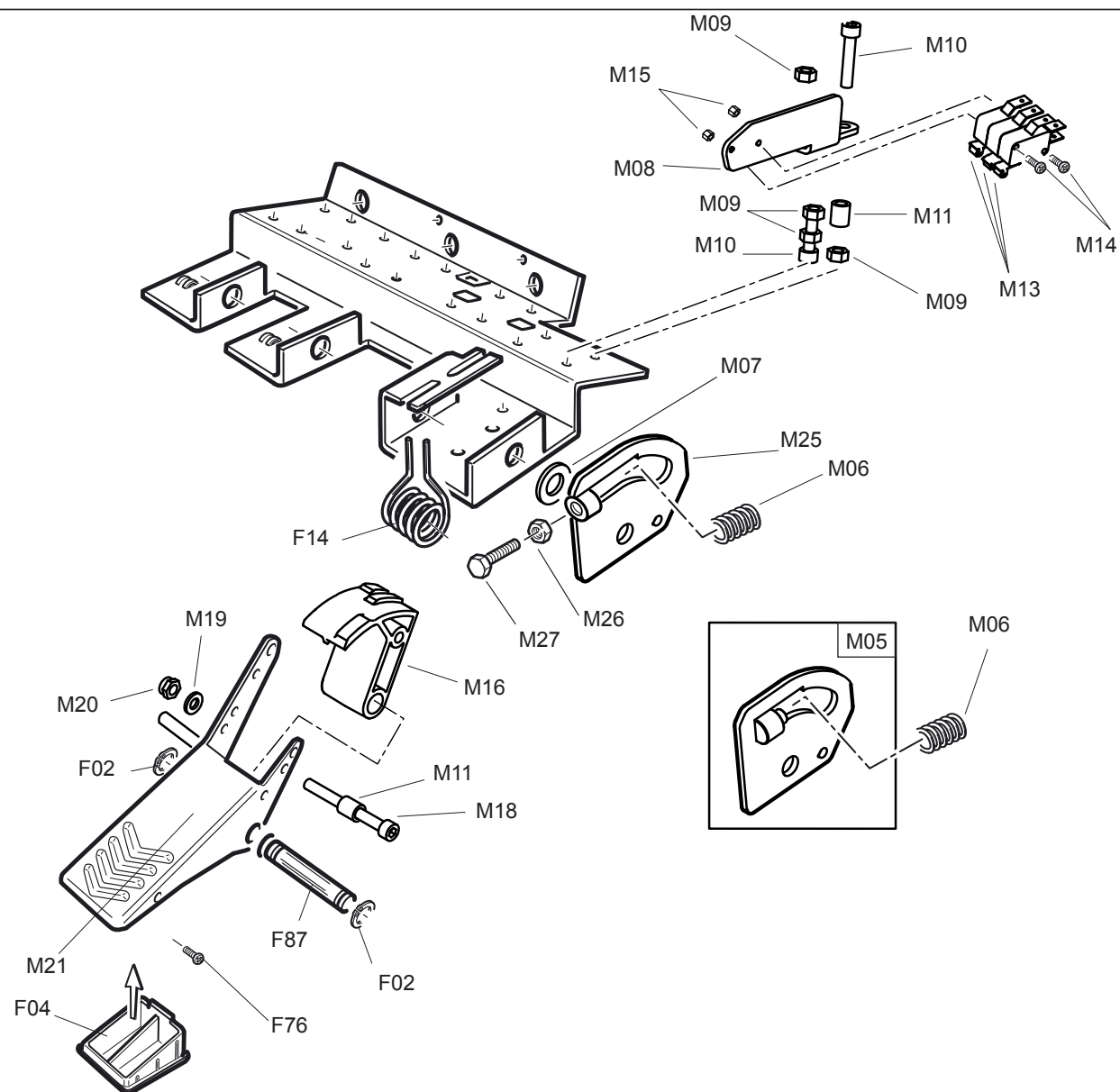
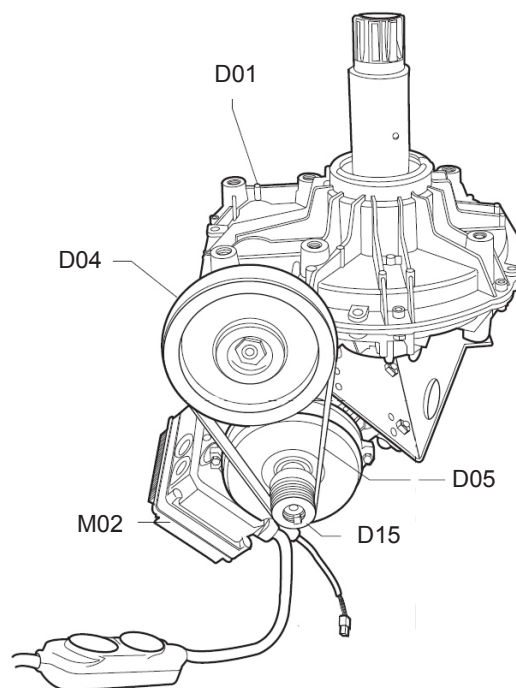
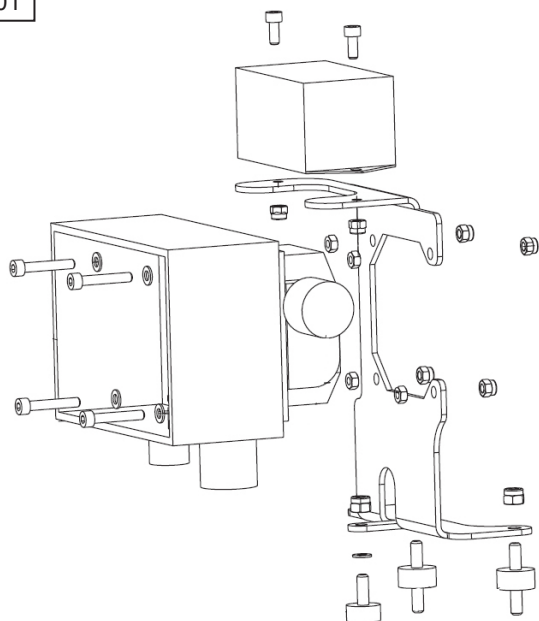
| RS | REF | COD. | DESCRIZIONE | DESCRIPTION |
|----|----------|--------------|--------------------------------|-----------------------------------|
| | L01 | 063967260 | GRUPPO LETTURA GONFIAGGIO | COMPLETE INFLATING UNIT |
| | L02 | 069403800 | TUBO USCITA ARIA T.I. | AIR HOSE TI |
| | L03 | 004815760 | LAMIERA ANTERIORE SCAT. GONF | FRONT BOX |
| | L04 | 3-00464 | RACCORDO D T8 | UNION T8 |
| | L05 | 109800700 | VALVOLA PULSANTE SGONF | PUSH BUTTON |
| | L06 | 004815860 | LAMIERA POSTERIORE SCAT. GONF | REAR BOX |
| | L07 | 009800700 | RIPARTITORE CENTR. GONFIAGGIO | DISTRIBUTION FRAME |
| | L08 | 045300200 | MANOMETRO CE D.80 | MANOMETER CE D90 |
| | L12 | 047802400 | RONDELLA | WASHER |
| | L13 | 3-00198 | RACCORDO TAPPO | PLUG UNION |
| | L14 | 4-600032 | SERBATOIO T.I. | TANK TI |
| | L15 | 2-00372 | VITE TE M 8X 16 | SCREW M 8X16 |
| | L16 | 3-00221 | RACCORDO -L-T8 | UNION L T8 |
| | L17 | 049802100 | VALVOLA LIMITATR.4,2 BAR GONF. | PRESSURE REGULATOR 4,2 BAR |
| | L17 | 063984100 | VALVOLA LIMITATRICE COMPLETA | COMPLETE PRESS. REGULATOR 4,2 BAR |
| | L18 | 3-00218 | RACCORDO-L-T8 | UNION L T8 |
| | L19 | 3-00049 | RACCORDO LO-T8 | UNION LO T8 |
| | L20 | 3-00464 | RACCORDO -D-T8 | UNION D T8 |
| | L21 | 3-00089 | RACCORDO TAPPO | PLUG UNION |
| | L22 | 2-00310 | VITE TCEI M 6X 20 | SCREW M6X20 |
| | L23 | 2-00211 | RONDELLA | WASHER |
| | L24 | 5-600494 | VALVOLA COMPLETA | COMPLETE DISTRIBUTOR |
| | L25 | 002300100 | CORPO VALVOLA DISTRIBUTR. 1/8" | VALVE BODY |
| | L26 | 044001400 | OR 9,8 X 3,85 | O-RING |
| | L27 | 002701200 | DISTANZIALE VALVOLA | DISTANCE RING |
| | L28 | 008701100 | STELO VALVOLA DISTRIBUTRICE T | VALVE SPINDLE |
| | L29 | 003401100 | FLANGIA VALVOLA | VALVE FLANGE |
| | L30 | 2-02887 | VITE ATBIC D3,5X12,7 | SCREW D3.5X12.7 |
| | L31 | 5-600111 | GRUPPO PEDALE GONFIAGGIO | COMPLETE PEDAL INFLATING |
| | (#7) L32 | 900128800100 | SUPPORTO PEDALE T.I | PEDAL SUPPORT |
| | L32A | 4-602185 | SUPPORTO PEDALE T.I | PEDAL SUPPORT |
| | L33 | 126400100 | PEDALE T.I. | T.I. PEDAL |
| | L34 | 2-01276 | DADO M12 | NUT M12 |
| | L35 | 2-01285 | VITE TE M12X 85 | SCREW M 12X85 |
| | L36 | 2-00528 | VITE STEI M 6X 8 | SCREW M6X8 |
| | L37 | 006401100 | PEDALE IN PLASTICA | PLASTIC PEDAL |
| | L38 | 2-00723 | DADO M 8 | NUT M8 |
| | L39 | 2-00375 | VITE TE M8x30 | SCREW M8x30 |
| | L40 | 2-02886 | VITE TTL M6x45 | SCREW M6x45 |
| | L41 | 3-090209 | MOLLA ISO10243 20x25 | SPRING |
| | L42 | 2-01979 | DADO M 6 | NUT M6 |
| | L43 | 2-00310 | VITE TCEI M 6X 20 | SCREW M6X20 |
| | L44 | 2-02620 | VITE TE M 4X 30 | SCREW M4X30 |
| | L45 | 2-02883 | DADO M 4 | NUT M4 |
| | L46 | 000900800 | BIELLA COMANDO VALVOLA | CONNECTING ROD |
| | L47 | 2-01979 | DADO M 6 | NUT M6 |
| | L48 | 2-00312 | VITE TCEI M6x25 | SCREW M6x25 |
| | L49 | 2-00146 | DADO M 6 | NUT M6 |
| | L50 | 005600400 | MOLLA RITORNO PEDALE | PEDAL SPRING |
| | | | | |
| | | | | |

RS= RICAMBI CONSIGLIATI / RECOMMENDED SPARES

AGGIORNAMENTI / UPDATE:

(#7): fino alla matr. / up to serial number 100960206

M01



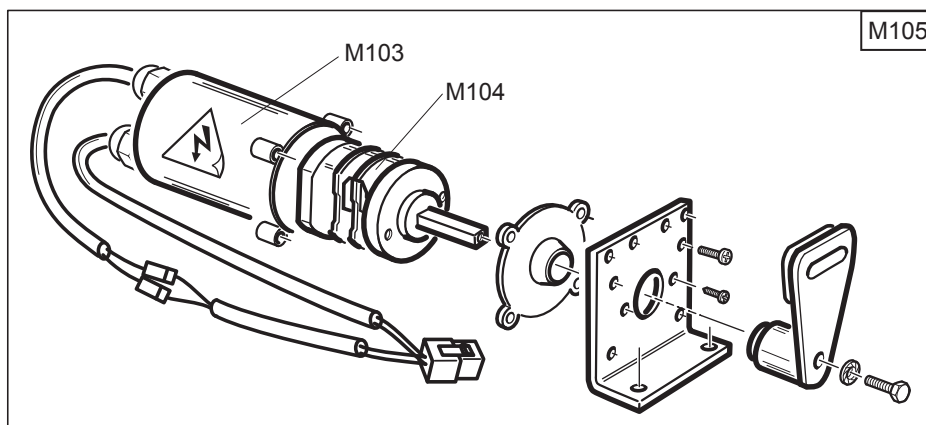
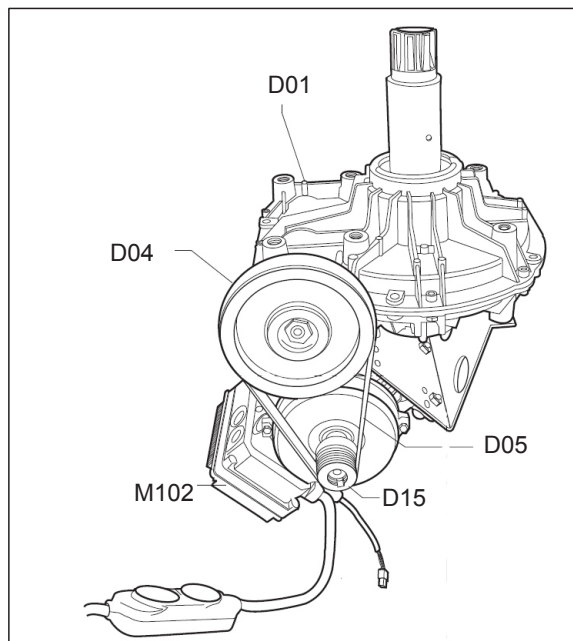
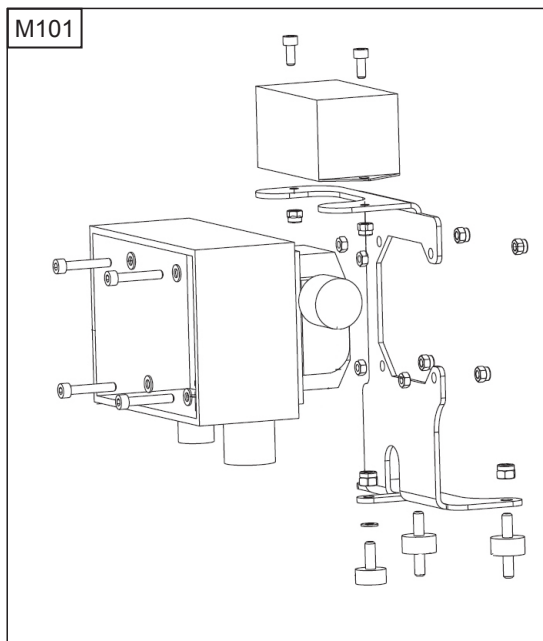
| | | |
|--|---------------|--|
| | TAV. M | VARIANTE MOTOINVERTER / MOTOINVERTER VERSION fino a matricola / up to serial number 120460371 |
|--|---------------|--|

| RS | REF | COD. | DESCRIZIONE | DESCRIPTION |
|----|-----------|-----------|--------------------------------|-----------------------------|
| | D01 | 103902100 | RIDUTTORE | GEARBOX |
| | D04 | 314344C | PULEGGIA RIDUTTORE | PULLEY |
| | D05 | 3-00555 | CINGHIA TRAPEZ A23 | BELT FOR 2 SPEED MOTOR |
| | D15 | 007300100 | PULEGGIA MOTORE 2 VEL | PULLEY FOR 2 SPEED MOTOR |
| | F02 | 2-00025 | ANELLO EL. D12 | SEEGER RING |
| | F04 | 009005000 | TAPPO PEDALE INVERTITORE | PHASE REVERSE PEDAL CUP |
| | F14 | 005606000 | MOLLA PEDALE INVERTITORE 2 VEL | REVERSE PEDAL SPRING 2SPEED |
| | F76 | 2-02888 | VITE ATBIC D4,2X 9,5 | SCREW D4.2X9.5 |
| | F87 | 4-600417 | PERNO CORTO PEDALIERE 4P | 4P PEDALS SHORT PIN |
| | M01 | 5-600470 | KIT INVERTER COMPLETO | COMPLETE INVERTER KIT |
| | M02 | 3-02593 | KIT MOTORE A INVERTER | COMPLETE MOTOR |
| | (#15) M05 | 5-600512 | SUPPORTO MOLLA | SPRING SUPPORT |
| | M06 | 3-90296 | MOLLA | SPRING |
| | M07 | 2-00214 | RONDELLA D. 12 | WASHER |
| | M08 | 4-601916 | SUPPORTO MICROINTERUTTORI | MICROSWITCH SUPPORT |
| | M09 | 2-00146 | DADO ESAG. M6 | NUT M6 |
| | M10 | 2-02856 | VITE TCEI M6X30 | SCREW M6X30 |
| | M11 | 4-601810 | DISTANZIALE | SPACER |
| | M13 | 3-01451 | MICROINTERRUTTORI | MICROSWITCH |
| | M14 | 2-94141 | VITE TCEI M3X40 | SCREW M3X40 |
| | M15 | 2-94142 | DADO ESAG. M3 | NUT M3 |
| | M16 | 4-401694 | CAMMA DI COMANDO | COMMAND CAM |
| | M18 | 2-00317 | VITE TCEI M6X60 | SCREW M6X60 |
| | M19 | 2-00211 | RONDELLA D. 6 | WASHER D.6 |
| | M20 | 2-01979 | DADO ESAG. AUTOBLOCC M6 | SELF-LOCKING NUT M6 |
| | M21 | 4-602031 | PEDALE | PEDAL |
| | M25 | 4-602253A | SUPPORTO MOLLA | SPRING SUPPORT |
| | M26 | 2-00723 | DADO ES. M8 | NUT M8 |
| | M27 | 2-00795 | VITE TE M8x35 | SCREW M8x35 |

RS= RICAMBI CONSIGLIATI / RECOMMENDED SPARES

AGGIORNAMENTI / UPDATE:

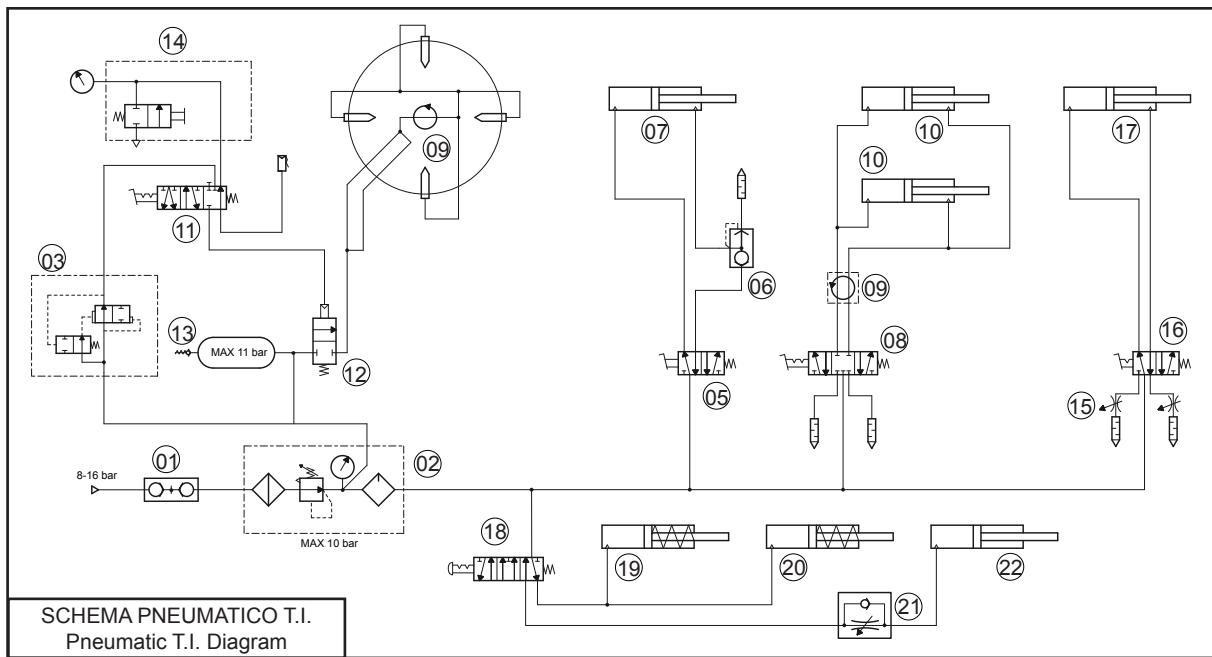
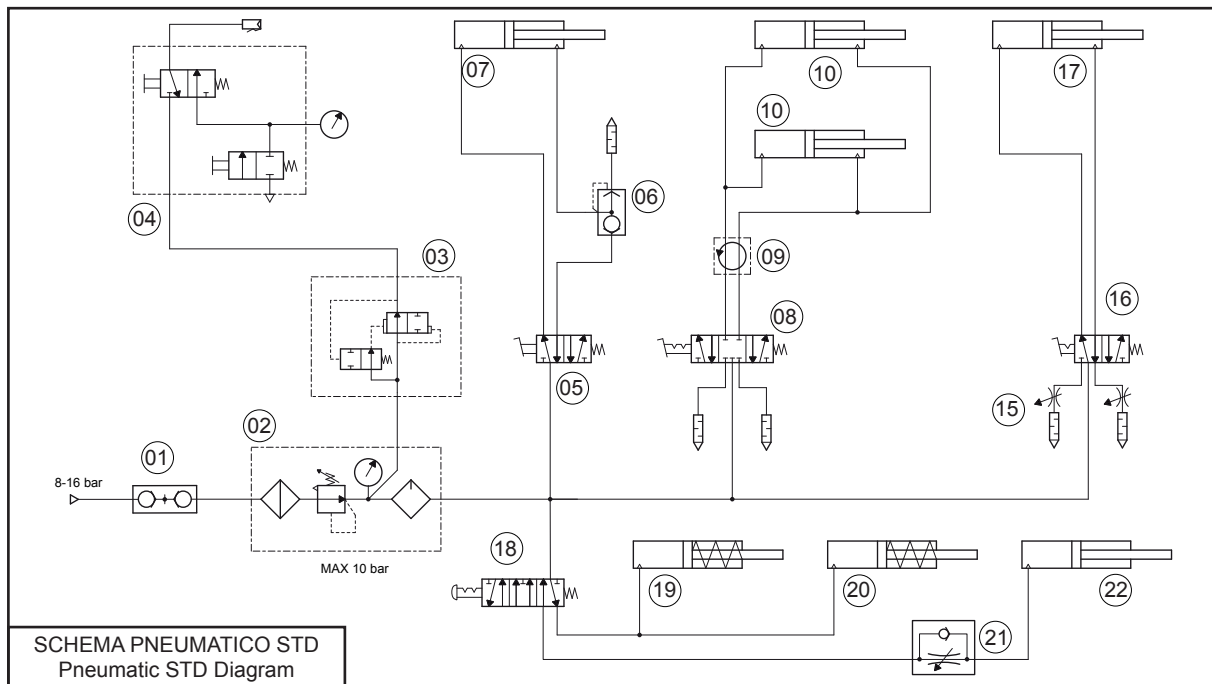
(#15): fino alla matricola / up to serial number 101260127



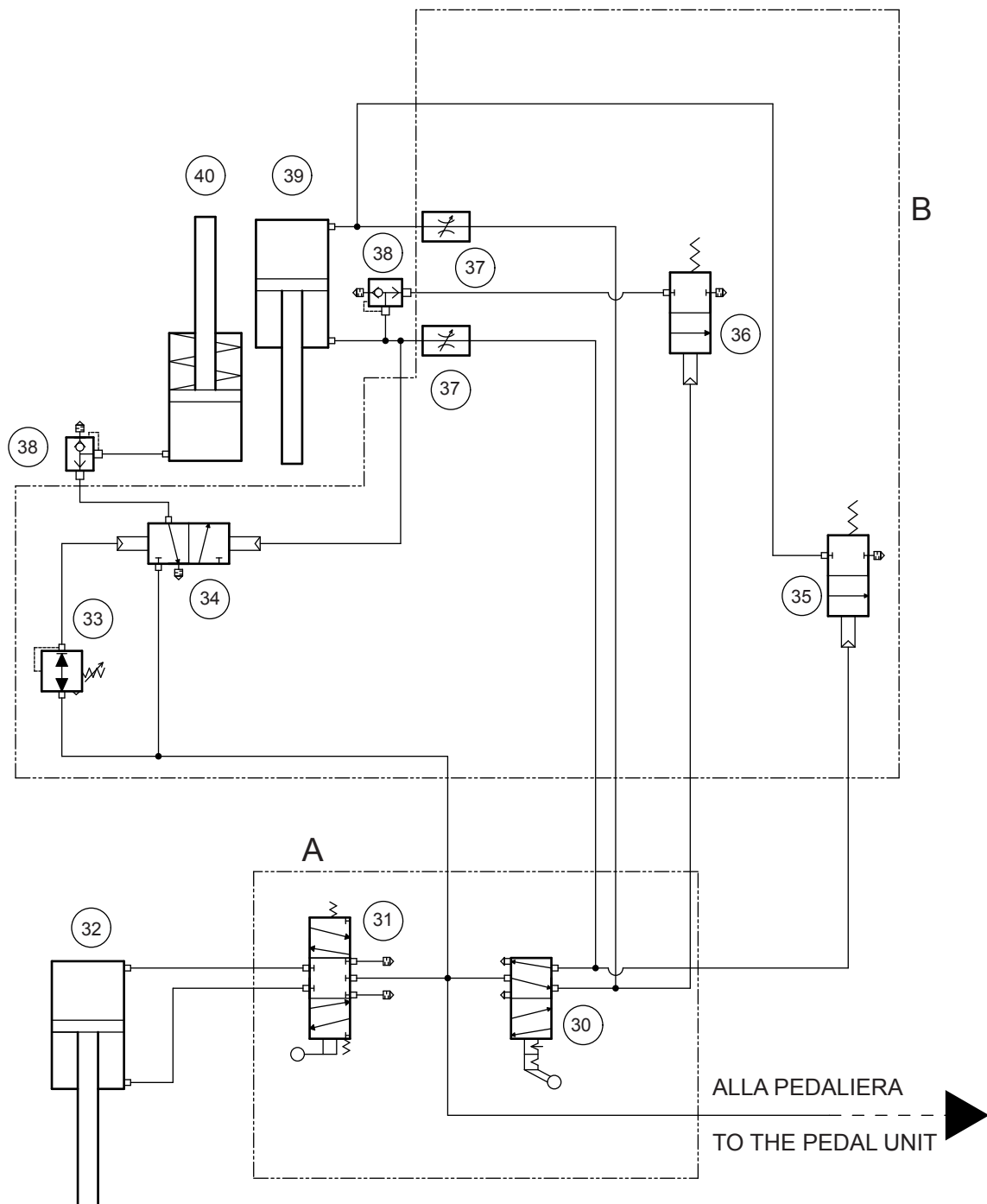
| RS | REF | COD. | DESCRIZIONE | DESCRIPTION |
|----|------|-----------|--------------------------------|---------------------------|
| | D01 | 103902100 | RIDUTTORE | GEARBOX |
| | D04 | 314344C | PULEGGIA RIDUTTORE | PULLEY |
| | D05 | 3-00555 | CINGHIA TRAPEZ A23 | BELT FOR 2 SPEED MOTOR |
| | D15 | 007300100 | PULEGGIA MOTORE 2 VEL | PULLEY FOR 2 SPEED MOTOR |
| | M101 | 5-600470 | KIT INVERTER COMPLETO | COMPLETE INVERTER KIT |
| | M102 | 3-02593 | KIT MOTORE A INVERTER | COMPLETE MOTOR |
| | M103 | 007201400 | PROTEZIONE INVERTITORE | REVERSE SWITCH PROTECTION |
| | M104 | 3-90133 | FRUTTO INVERTITORE 2 VELOCITA' | 2-SPEED REVERSE SWITCH |
| | M104 | 5-600842 | KIT FRUTTO INVERTITORE 2V | 2 SPEED REVERSE KIT |
| | M105 | 5-600648A | INVERTITORE COMPLETO | COMPLETE REVERSE SWITCH |

RS= RICAMBI CONSIGLIATI / RECOMMENDED SPARES

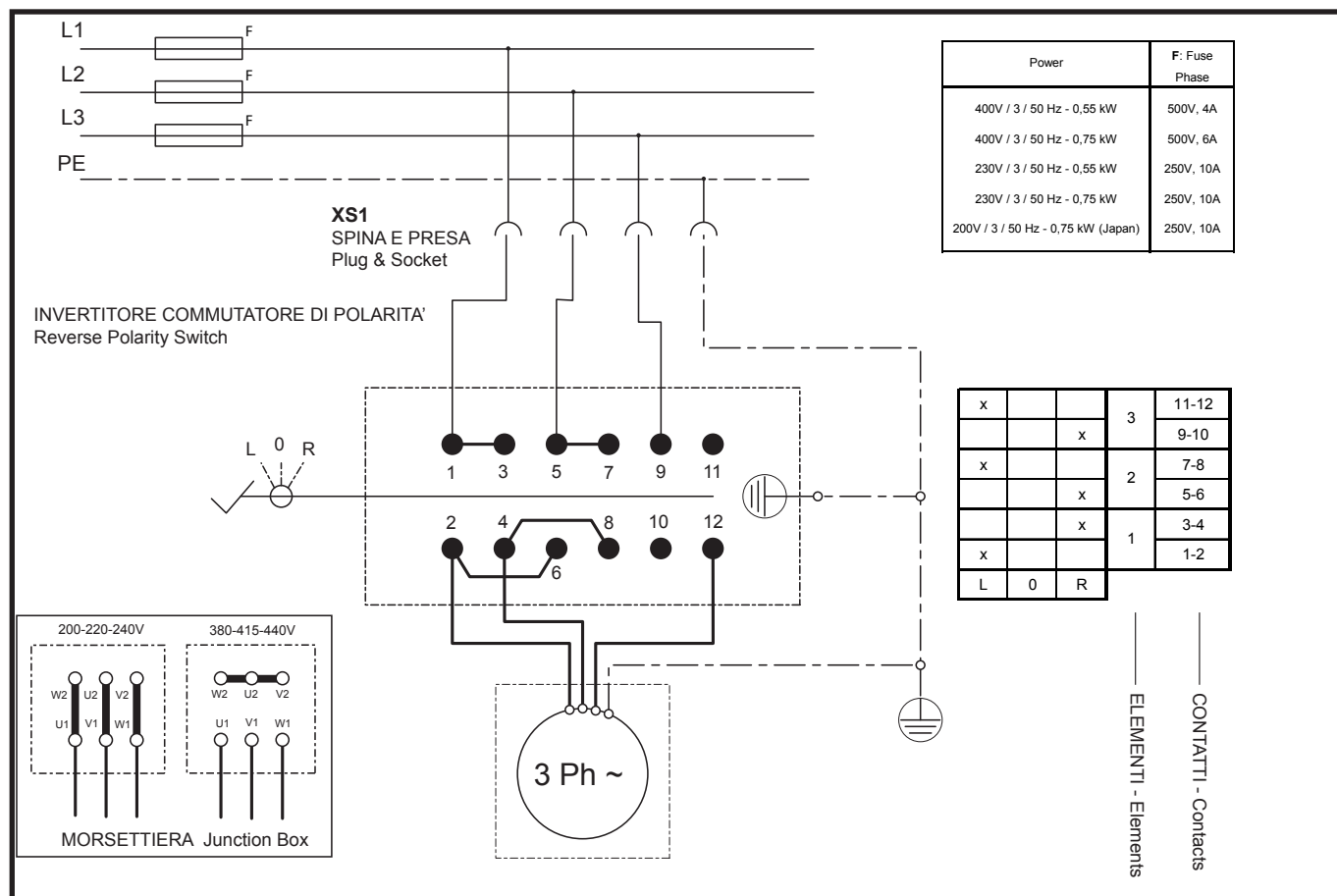
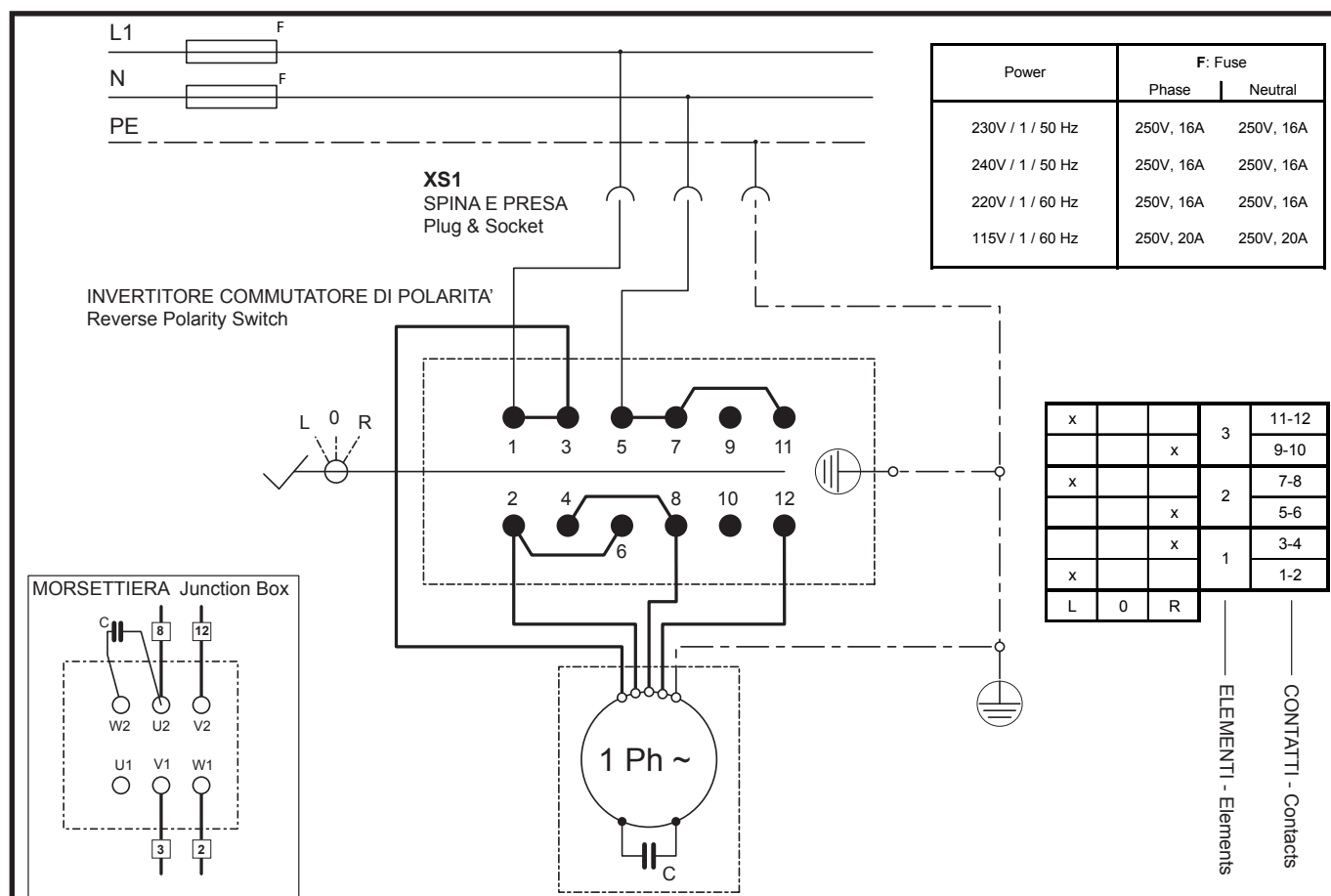
AGGIORNAMENTI / UPDATE:

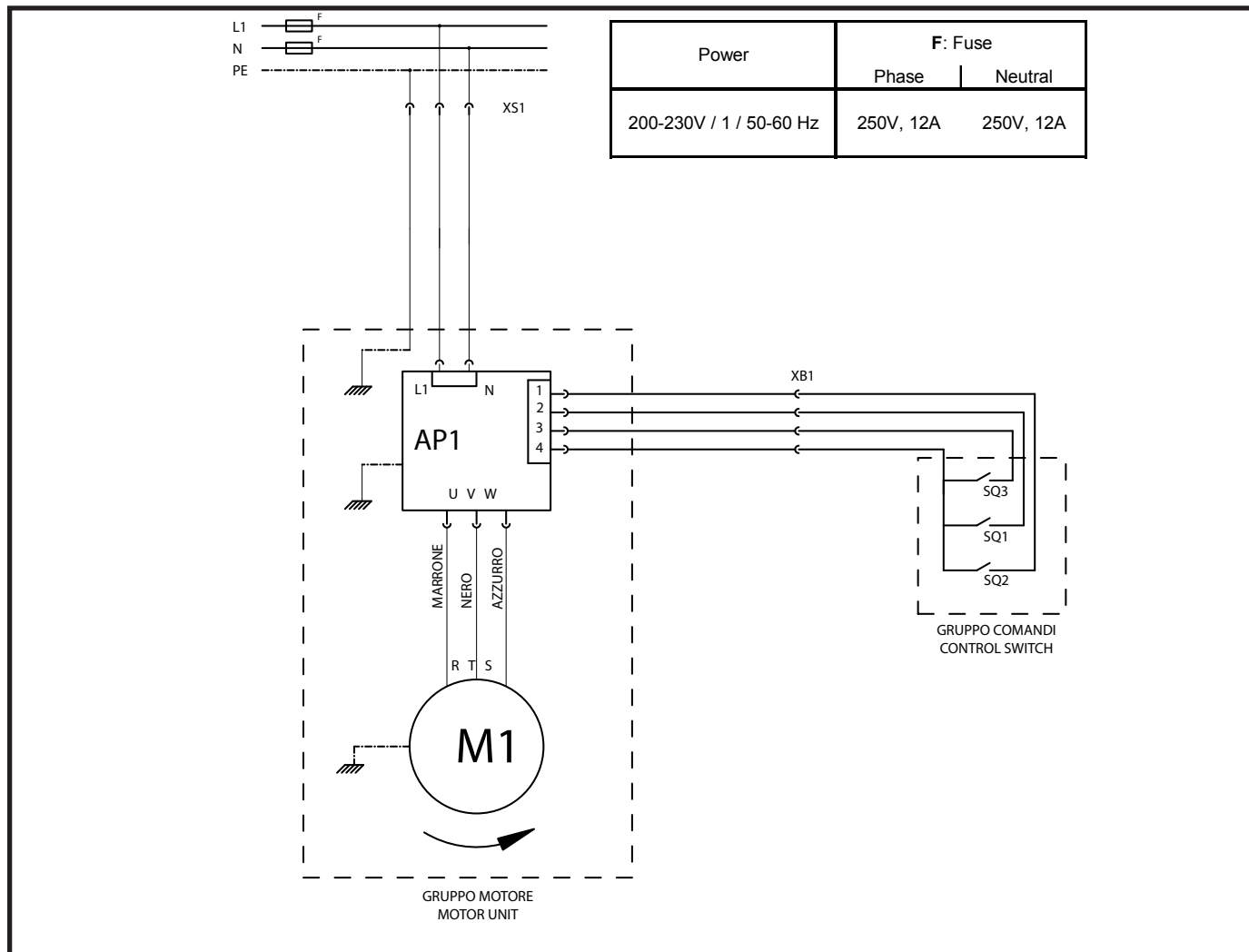


| REF | DESCRIZIONE | DESCRIPTION | REF | DESCRIZIONE | DESCRIPTION |
|-----|---------------------------|---|-----|-------------------------------|---------------------------------|
| 01 | INNESTO RAPIDO MASCHIO | QUICK UNION | 12 | VALVOLA A MEMBRANA | VALVE |
| 02 | GRUPPO FRL | WATER SEPARATOR AND PRESSURE REGUL+LUBRICATOR | 13 | VALVOLA DI SICUREZZA | SAFETY VALVE |
| 03 | VALVOLA GONFIAGGIO RAPIDO | QUICK INFLATING VALVE | 14 | UNITA' DI GONFIAGGIO | INFLATE UNION BOX |
| 04 | PISTOLETTA DI GONFIAGGIO | INFLATING GUN AND GAUGE | 15 | SILENZIATORI REGOLABILI | REGULATE SYLENCER |
| 05 | VALVOLA STALLONATORE | BEAD BREAKING VALVE | 16 | VALVOLA PALO VERTICALE | VERTICAL POST VALVE |
| 06 | VALVOLA SCARICO RAPIDO | QUICK DISCHARGED VALVE | 17 | CILINDRO PALO VERTICALE | VERTICAL POST CYLINDER |
| 07 | CILINDRO STALLONATORE | BEAD BREAKING CYLINDER | 18 | PULSANTE BLOCCAGGIO BRACCIO | LOCKING HORIZONTAL ARM BUTTON |
| 08 | VALVOLA AUTOCENTRANTE | SELF-CENTERING CHUCK VALVE | 19 | CILINDRO BLOCCAGGIO BRACCIO | LOCKING HORIZONTAL ARM CYLINDER |
| 09 | RACCORDO GIREVOLE | ROTATING UNION | 20 | CILINDRO BLOCCAGGIO ASTA VERT | LOCKING VERTICAL SHAFT CYLINDER |
| 10 | CILINDRO AUTOCENTRANTE | SELF-CENTERING CHUCK CYLINDER | 21 | VALVOLA DI REGOLAZIONE | REGULATION VALVE |
| 11 | VALVOLA DI GONFIAGGIO | INFLATING VALVE | 22 | CILINDRO SOLLEVAMETNO ASTA | VERTICAL SHAFT LIFTING CYLINDER |



| REF | DESCRIZIONE | DESCRIPTION |
|-----|-------------------------|-------------------------|
| 30 | SELETTORE | SELECTOR |
| 31 | VALVOLA DI CONTROLLO | CONTROL VALVE |
| 32 | CILINDRO AVANZAMENTO | TPH CYLINDER |
| 33 | REGOLATORE DI PRESSIONE | PRESSURE REGULATOR |
| 34 | VALVOLA | VALVE |
| 35 | VALVOLA AVANZAM. DISCO | FEEDING VALVE TPH DISC |
| 36 | VALVOLA RITORNO DISCO | RETURN VALVE TPH DISC |
| 37 | REGOLATORE DI FLUSSO | FLOW REGULATOR |
| 38 | VALVOLA SCARICO RAPIDO | QUICK VENTING VALVE |
| 39 | ALIMENTAZIONE CILINDRO | FEED PNEUMATIC CYLINDER |
| 40 | BLOCCAGGIO CILINDRO | LOCKING CYLINDER |
| A | CONSOLLE DI COMANDO TPH | TPH CONTROL PANEL |
| B | UNITA' DI CONTROLLO TPH | TPH CONTROL UNIT |





NOTE

[illegible]

