

Spring compressor

Efficient, professional and safe dismounting and mounting of McPherson "struts".

CSC



2 spring holders (78 - 125 mm and 125 - 200 mm).

Accessories

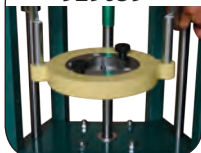
929050



Strut vice. Recommended for BMW 3-serie, Toyota RAV4, Toyota Avensis.

Vehicle specific solutions

929059



Mercedes C-class bracket from 2010 and later

929052



Mercedes A, B, C and E Class bracket (C-class until 2009).

929053



Low lip jaws for some Japanese produced cars.



Keyword:
Compac CSC



Enough power to compress strong springs on vehicles like Ducato, Jumper and Boxer.



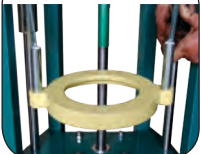
McPherson strut mounted in strut vice.

Mobile. Easily moved between workstations. Ready for use in a matter of seconds.



Easy access to mounting and demounting of the top nut.

929056



Porsche Cayenne, VW Touareg bracket.

929051



Spring holder 105 / 182 mm. Recommended for Renault Megane, Renault Clio, Citroën C2, Citroën C3, Peugeot 207, Peugeot 208, Peugeot 307.

929060



Renault Koleos, Nissan Qashqai bracket.