



# **NEW!** Truck BT 13-18t including load simulation

BEISSBARTH BRAKE TESTERS FOR TRUCKS



# New! Controlled by tablet app

## Beissbarth BD-series 5, 6, 7 and 8



New! Download the app at [play.google.com](https://play.google.com) for a free of charge 30 days testing period. You can obtain your license for the ICperform tablet app\* (order number 1 691 810 756).



\*Available only for Android

# Beissbarth brake testers at a glance

## BD 8xxx

- Up to 18t axle load
- Fitting into any common foundation
- Load simulation (optional)
- ICperform software
- **New!** Tablet app



## BD 7xxx

- Up to 13t axle load
- Fitting into any common foundation
- Load simulation (optional)
- ICperform software
- **New!** Tablet app



## BD 6xxx

- Up to 16t axle load
- Identical roller sets with MB 8100/BSA 56xx
- ICperform software
- **New!** Tablet app



## BD 5xxx

- Up to 13t axle load
- Identical roller sets with MB 8815/BSA 53xx
- ICperform software
- **New!** Tablet app





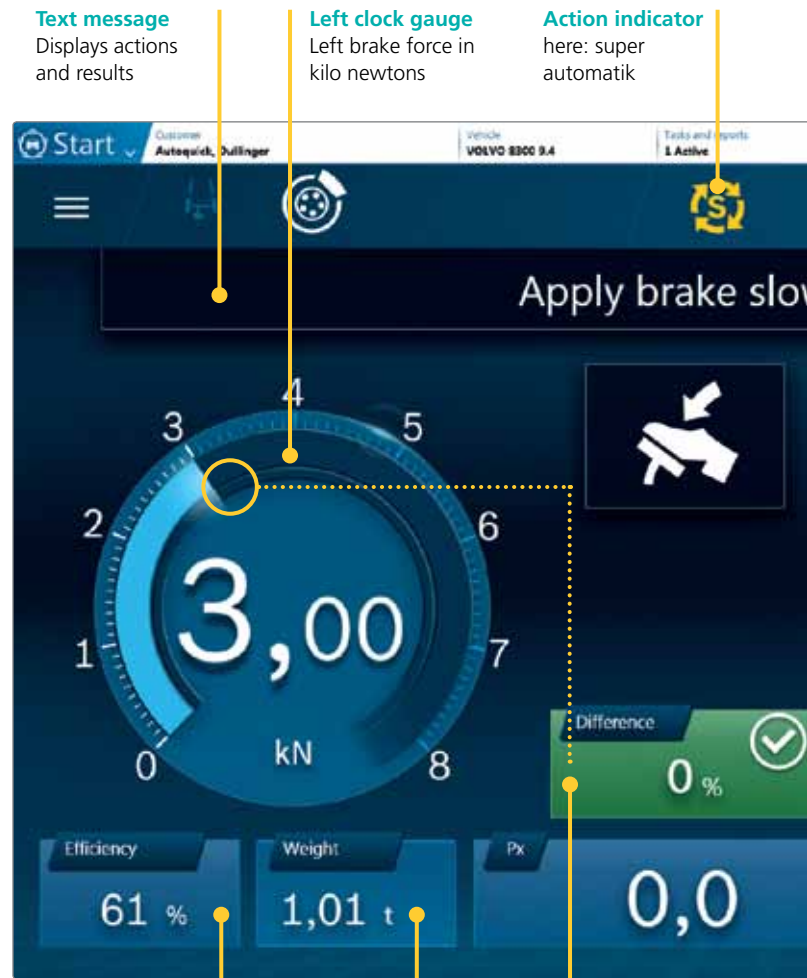
# ICperform: new software, new tablet app



Configuration of axles and air-pressure sensor



Controlled drive-in



**Text message**  
Displays actions  
and results

**Left clock gauge**  
Left brake force in  
kilo newtons

**Action indicator**  
here: super  
automatik

**Axial braking**  
Value calculated  
from axial brake  
force and axial  
weight in percent

**Axle load**  
in tons

**Brake-force difference  
indicator**  
Difference between left  
and right brake force in  
percent

## New! Software ICperform: for intuitive and fast use

- Optimum display of all relevant measured values
- Easy handling
- Faster brake testing
- Print and database functions
- Connection with other test devices within the test lane





**Px**  
Measured axial pressure

**Px No.**  
Number of pressure sensor in remote-control version

**PM**  
Pressure applied onto the brake pedal

**Licence plate**  
of vehicle



Ovality measurement



Overview of results

**Currently tested axle**



**All measuring results at a glance**  
Simply use your own flatscreen or TV monitor (HDMI)

**ICperform:** comfortably using the tablet app



New! The ICperform  
tablet app!





# ICperform App



## Neu! ICperform tablet app: measuring faster without having to get on and off the truck

- The intuitive user interface can be accessed via Android tablets operate and enable stable measured value transmission and control via the W-LAN connection – even from inside the vehicle.
- Roll resistance, ovality, braking forces per axis or wheel, left-right comparison or pressure values, all data are displayed in real time and visually intuitive
- Working with Beissbarth's ICperform tablet app speeds up the process and eliminates unnecessary entry and exit from the vehicle.

## New! ICperform tablet app from Google Play

The app is available at [play.google.com](https://play.google.com). Download it to your tablet and try the features for up to 30 days free of charge. You can obtain your license for the ICperform tablet app (order number 1 691 810 756) directly from the Beissbarth hotline.

**Download at [play.google.com](https://play.google.com) and use the app free of charge for a 30 days testing period.**



## Carrying out brake tests easily and quickly with the software ICperform tablet

- Data entry of vehicle information
- Selection of testing mode
- Test control conveniently in the vehicle cabin
- Usage of own tablet devices
- Same representation as on the workshop PC monitor

## Easy control from the inside of the truck

- Intuitive and guided: fully automated procedure (covers 80 % of the common test ing routines)
- Integrated remote control
- State of the braking test and important measuring results always at a glance

## Min. tablet requirements

- Operating system: Android 5.0 or higher
- Minimum size: 8"
- Recommended size: 9,6"
- Width-to-height ratio: 16 : 9 or 16:10
- Basic requirement: WLAN network with router

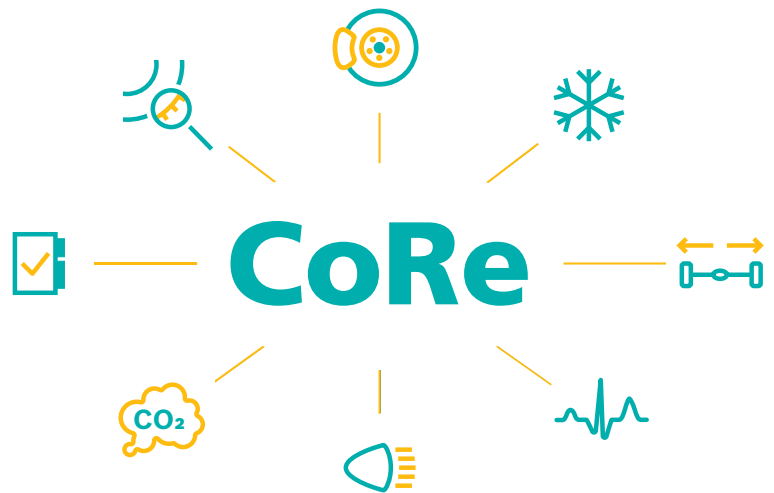
# Beissbarth Connected Repair for connected truck systems

- Brake testing
- Headlight testing
- Emission analysis
- Air condition service

## Beissbarth Connected Repair:

Connected Repair is able to read commercially available job data. Thanks to crosslinking, the central server-based software solution eases and accelerates the work processes of all connected test devices. Purchasing BD, the software for one\* work station is included within the scope of delivery.

\* Network version for several workstations might be subjected to additional fees.



Intelligently crosslinked: Bosch Connected Repair



MLD 815 used on a truck

## Connected Repair: for faster work processes

### MLD 815 headlight testers

- Tests all types of light sources (xenon, bi-xenon, LED, bi-LED, halogen) and all types of truck headlights.
- MLD 815 Matrix/DLA version for glare-free high-beam systems (DLA\*, Matrix)
- With CMOS camera and integrated printer.

\* Dynamic Light Assist



Accurate display of the test results on the workshop computer. Integrate the Headlight tester by using the optional PC Software.

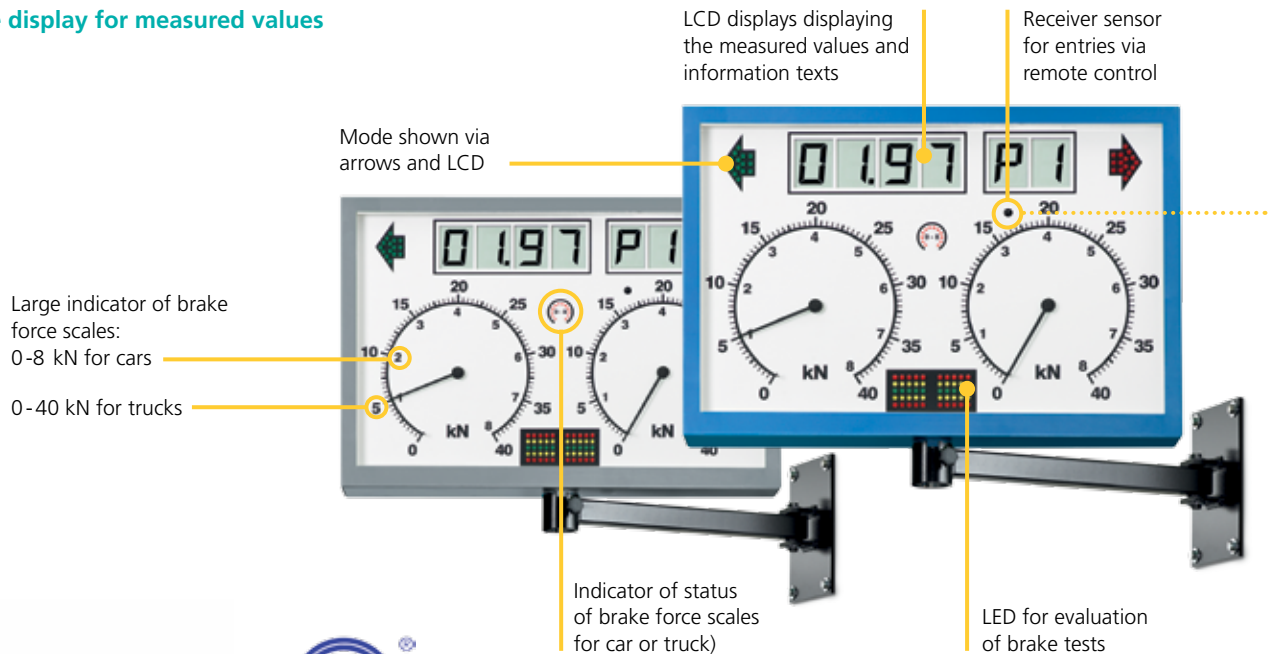


Digital headlight tester MLD 815



# Real-time display, power box, cabinet

## Analogue display for measured values (optional)



### Practical control center for the workshop

- Control cabinet for power electrics, control electronics and interfaces
- PC ready: direct connection to the workshop computer
- In line with § 29 StVZO (VkBf. 09/2011) of the German road traffic registration equipped with ASA Livestream



IR receiver  
for workshop PC with  
serial port RS232 (COM)



### Optional: PC trolley\*

- For the customer's PC equipment
- Prepared with TFT display holder
- RAL 5015 (blue) or RAL 7040 (grey)



### Optional: PC trolley

- PC, printer, TFT display 27", keyboard, Mouse, IR receiver, IR-remote control
- RAL 5015 (blue) or RAL 7040 (grey)



### For optimized representation of the measured values

the use of a custom flat screen/  
TV Monitor is recommended.

\* For PC system requirements, see page 15

# Robust and durable by hot-dip galvanization



Durable sliding rails



8-point load cell



Option prepared for tachometer control



Drive-over plates



Strong mechanics: weather-resistant hot-dip galvanization, steel chains



Radio controlled air-pressure sensors

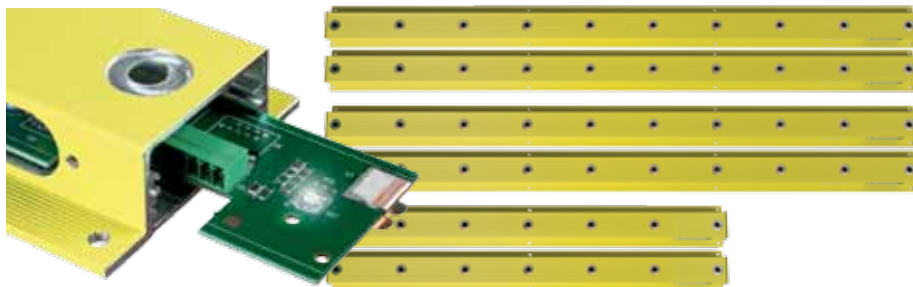




# Safe working in the pit



PSC1, pit safety protection, alongside



PSC2, pit drive-in protection, transverse, 3 different sizes, see accessories, page 20



# Hydraulic load simulation

## for general inspections in line with the guideline

**In line with § 29 StVZO (VkB1. 09/2011),  
of the German road traffic registration ordinance,  
Deadline 31.12.2019\***

- Lifting device for load simulation (lifting height: 200 mm)
- Neatly integrated into the roller housing
- Increases the brake-cylinder pressure to the 1.7 bar demanded
- Remote control (optional) right from the driver cab
- Suitable for almost all trucks and trailers
- Especially recommended for empty/lightweight lorries
- Models with strong motors and test speed up to 5.29 km/h

\* as of 2020 only with brake testers complying with the guideline

According to the guideline, commercial vehicles need to be tested with a minimum statutory brake pressure of 1.7 bar. In case of commercial vehicles with a high load/no-load ratio – e.g. empty trucks and trailers – not building up the required minimum pressure, load simulation can be used as well. Instead of sophisticated tying down of multiple axles, the axle to be tested can also be lifted for the test. At this much simpler procedure, the required axial pressure is created by altering the weight balance.



Lowered roller set



Lifted roller set



Remote control  
for hydraulic load  
simulation (optional)



Control cabinet  
for hydraulic load  
simulation

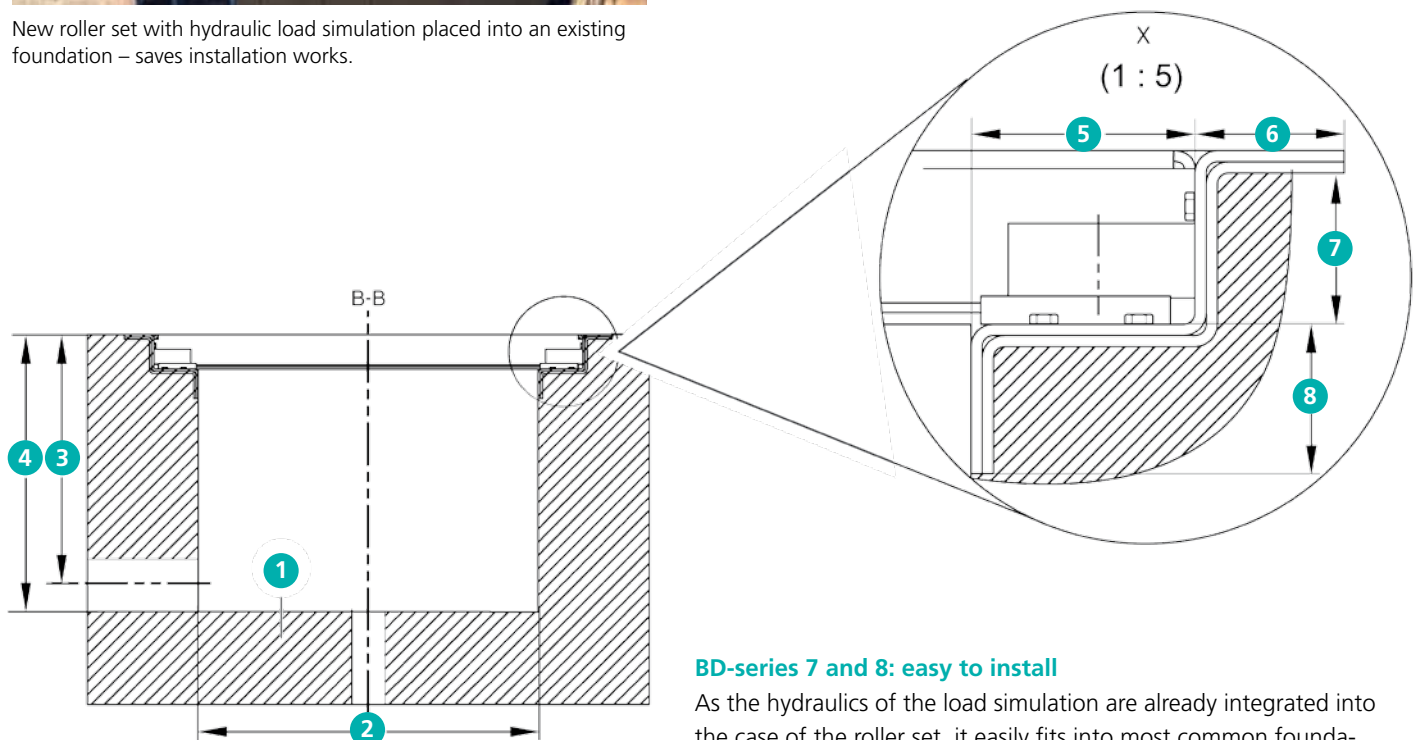
# Fits into any common foundation



New roller set with hydraulic load simulation placed into an existing foundation – saves installation works.

## Prerequisite to the foundation

Pos.	13 t	18 t
1	C20/25 (DIN EN 19992-1-1)	C20/25 (DIN EN 19992-1-1)
2	820 mm	920 mm
3	575 mm	675 mm
4	650 mm	750 mm
5	120 mm	120 mm
6	80 mm	80 mm
7	93 mm	93 mm
8	80 mm	80 mm



## BD-series 7 and 8: easy to install

As the hydraulics of the load simulation are already integrated into the case of the roller set, it easily fits into most common foundations. Simply remove the old tester and install the new one.

## BD-series 5 and 6: Brake testers with proven mechanics



### Beissbarth brake testers BD-series 5 and 6

- Identical roller sets with brake testers MB 8815/BSA 53xx and MB 8100/BSA 56xx
- **New!** ICperform software and optional tablet app
- BD 6xxx can be ordered with standard rollers (1 000 mm) or extended rollers of 1 100 mm length (comparable with MB 8100/BSA 56xx)



Weather-resistant hot-dip galvanization, steel chains



Speed sensor





Coated rollers



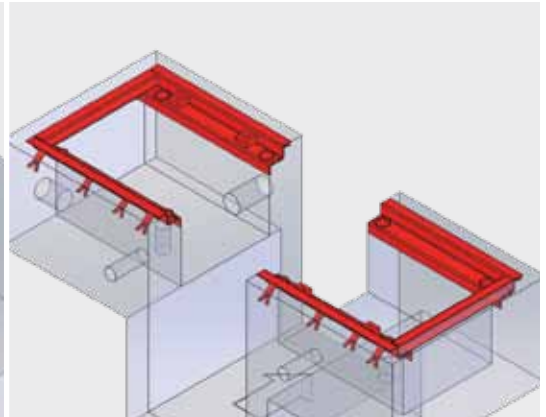
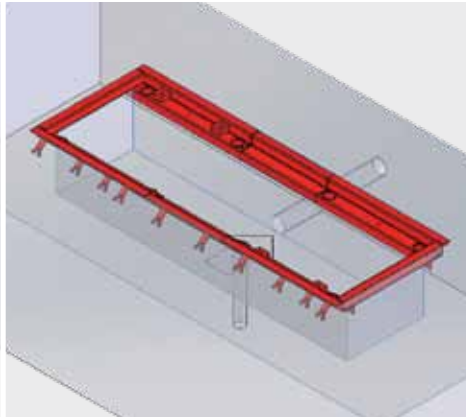
Drive-over plates

# Installation variants

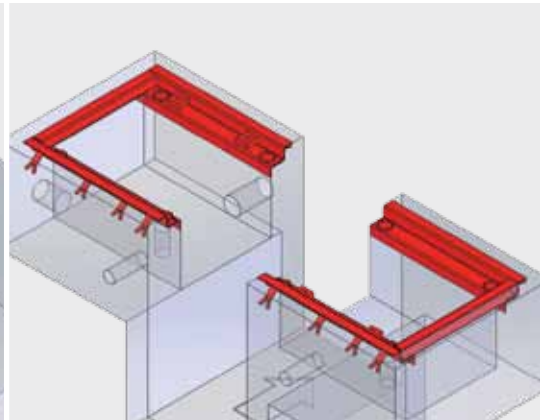
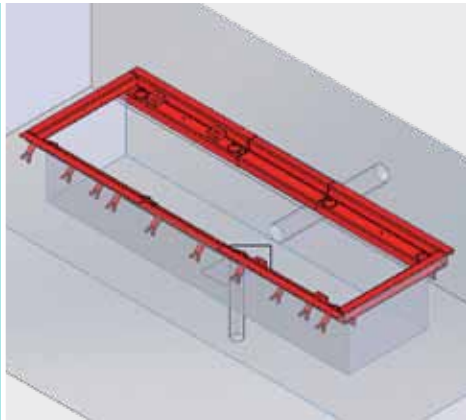
Without pit

With pit

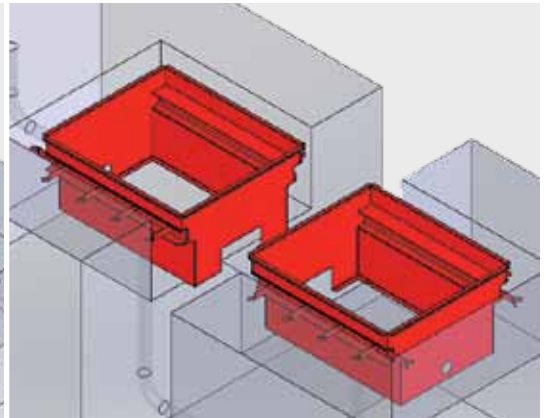
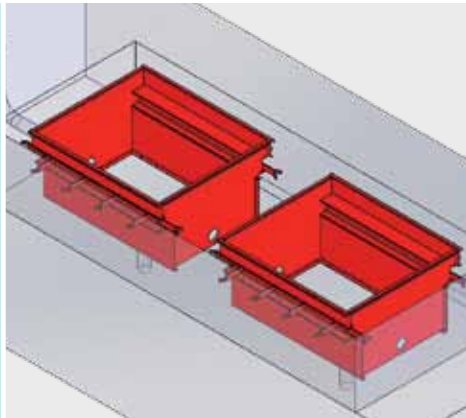
BD 8xxx



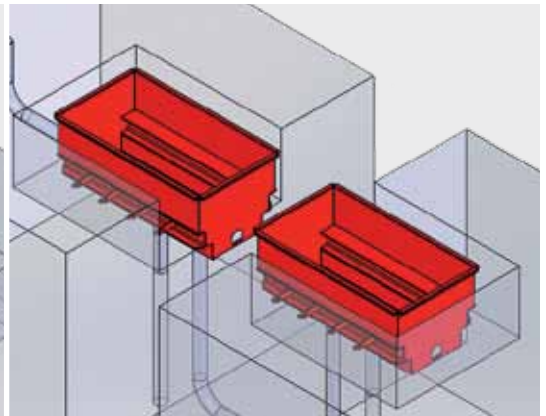
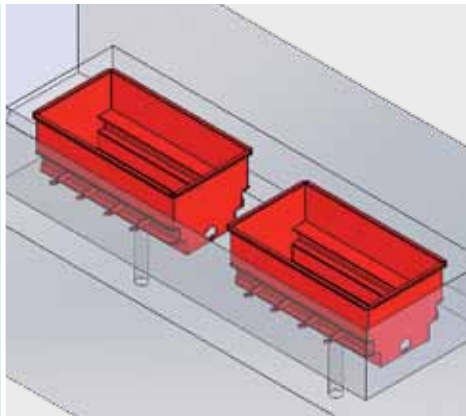
BD 7xxx



BD 6xxx



BD 5xxx



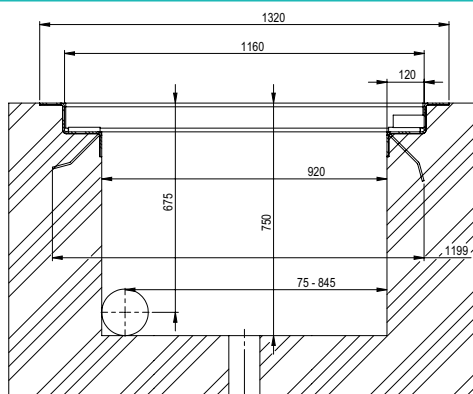


# Foundation requirements

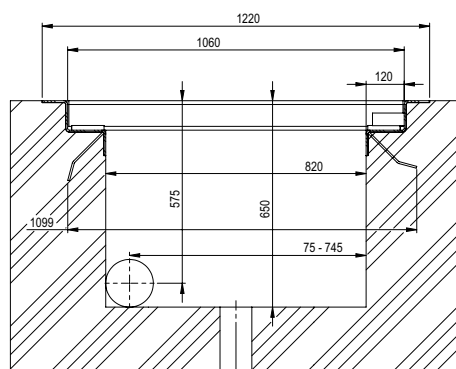
Dimensions

Brake tester

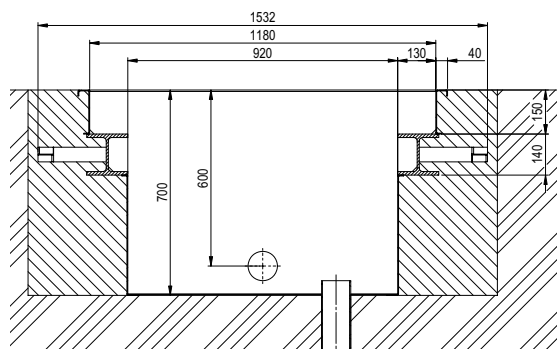
BD 8xxx



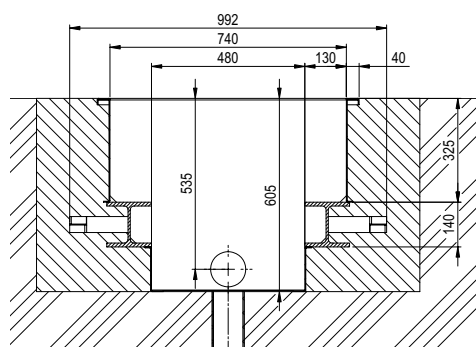
BD 7xxx



BD 6xxx



BD 5xxx





# Accessories for BD-series 5, 6, 7 and 8


Figure	Mandatory accessories	Order number	5	6	7	8
	Truck software ICperform (License activation required)	1 691 810 741	•	•	•	•

Figure	Optional accessories	Order number	5	6	7	8
	Tablet App (System requirements see page 21)	1 691 810 756	•	•	•	•
	IR remote control (incl. battery)  Alternatively the control can be executed via tablet app.	1 691 810 704	•	•	•	•
	IR-Kit Truck (Receiver RS232, remote control, battery) With Beissbarth PC trolley and analogue display included in scope of delivery. Order optional, if own PC is used or no display is needed.	1 691 810 702	•	•	•	•
	Remote control for hydraulic load simulation	1 691 810 701			•	•
	Testlane PC (technical requirements in case of usage of own PC, see page 21)	1 691 810 703	•	•	•	•
	Trolley, RAL 5015 (incl. adapter for a 27" monitor)	1 691 810 744	•	•	•	•
	PC Trolley, RAL 5015, incl. PC, printer, keyboard, mouse, 27" monitor, IR receiver, remote control	1 691 810 745	•	•	•	•




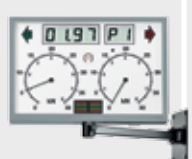




Figure	Optional accessories	Order number	5	6	7	8
	Trolley, RAL 7040 (only incl. adapter for a 27" monitor)	1 691 810 742	•	•	•	•
	PC trolley, RAL 7040, complete incl. PC, printer, keyboard, mouse, 27" monitor, IR receiver, remote control	1 691 810 743	•	•	•	•
	Analogue display, RAL 5015, LCD, swivel arm, IR receiver	1 691 810 746	•	•	•	•
	Analogue display, RAL 7040, LCD, swivel arm, IR receiver	1 691 810 747	•	•	•	•
	Analogue display, RAL 7016, LCD, swivel arm, IR receiver	1 691 810 750	•	•	•	•
	Stand column aluminum for analogue display, RAL 5015	1 691 810 748	•	•	•	•
	Stand column aluminum for analogue display, RAL 7040	1 691 810 749	•	•	•	•
	Stand column aluminum for analogue display, RAL 7016	1 691 810 722	•	•	•	•

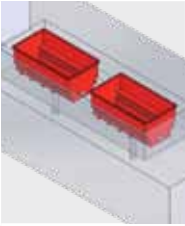
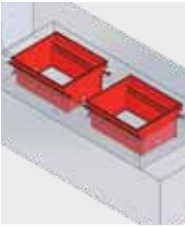
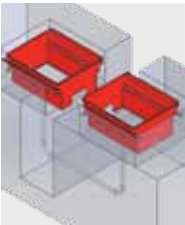
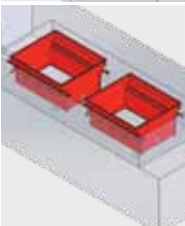
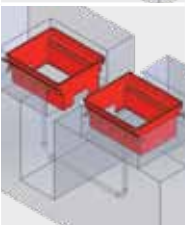
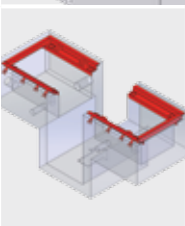
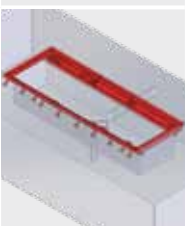



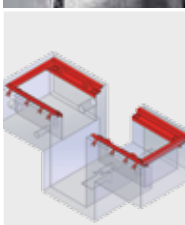
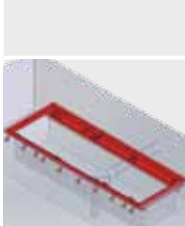
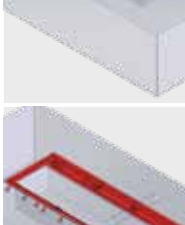


Figure	Installation accessories	Order number	5	6	7	8
	Assembling case BD 5xxx, with/without pit	1 691 881 204	•			
	Assembling case BD 6xxx 1000 mm, w/o pit	1 691 811 081		•		
	Assembling case BD 6xxx 1000 mm, for pit use	1 691 811 082		•		
	Assembling case BD 6xxx 1100 mm, w/o pit	1 691 811 083		•		
	Assembling case BD 6xxx 1100 mm, for pit use	1 691 811 084		•		
	Built-in frame, BD 7xxx with 1000 mm rollers, for pit use	1 691 880 700			•	
	Built-in frame, BD 7xxx with 1000 mm rollers, non-separated (w/o pit), track width 2700mm	1 691 880 701			•	
	Built-in frame, BD 7xxx with 1000 mm rollers, non-separated (w/o pit), track width 2800mm	1 691 880 702			•	

Figure	Installation accessories	Order number	5	6	7	8
	Built-in frame, BD 7xxx with 1000 mm rollers, non-separated (w/o pit), track width 2900mm	1 691 880 703			•	
	Kit of drive-over plates (4 pieces, 2 on each side) for BD 7xxx	1 691 880 704			•	
	Built-in frame, BD 8xxx with 1000 mm Rolls, for pit use	1 691 810 713				•
	Built-in frame, BD 8xxx with 1000 mm rollers, non-separated (w/o pit), track width 3000 mm	1 691 810 714				•
	Built-in frame, BD 8xxx with 1000mm rollers, non-separated (w/o pit), track width 3100 mm	1 691 810 715				•
	Built-in frame, BD 8xxx with 1000 mm rollers, non-separated (w/o pit), track width 3200 mm	1 691 810 716				•
	Kit of drive-over plates (4 pieces, 2 on each side) for BD 6xxx and BD 8xxx	1 691 810 717		•		•

# Accessories for BD-series 5, 6, 7 and 8

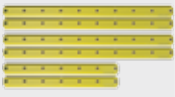

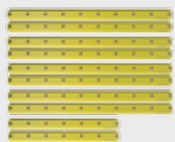


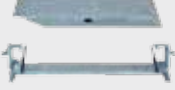

Figure	Accessories	Order number	5	6	7	8
	PSC2, pit safety cross, 2.5 m safety area behind roller sets	1 691 810 723	•	•	•	•
	PSC2, pit safety cross, 1.5 m safety area in front of the roller sets and 2.5m safety area behind roller sets	1 691 810 724	•	•	•	•
	PSC2, pit safety cross, 2.5 m safety area in front of the roller sets and behind roller sets	1 691 810 725	•	•	•	•
	PSC1, pit safety barrier, 15 m safety area	1 691 810 726	•	•	•	•
	PSC1, additional swivel bracket for pit protection	1 692 100 102	•	•	•	•

Figure	Accessories	Order number	5	6	7	8
	8-point scale for BD 5xxx	1 691 881 101	•			
	8-point scale for BD 6xxx	1 691 801 012		•		
	8-point scale (Depending on the configuration might be part of the scope of delivery)	1 691 810 718			•	•
	APS1, basic set of wired air-pressure sensors, PM, PX1	1 691 810 733	•	•	•	•
	APS1, wired pedal-force tester PD	1 691 810 734	•	•	•	•
	APS2, wireless pedal-force tester PD	1 691 810 731	•	•	•	•
	APS2, basic set of wireless air-pressure sensors, PM, PX1, PX2, charge unit	1 691 810 730	•	•	•	•
	APS2, additional pressure sensor PX incl. charge unit	1 691 810 732	•	•	•	•
	Warning system for the use of compressed air sensors (radio warning system with horn/ immobilizer)	1 691 810 735	•	•	•	•



Figure	Accessories	Order number	5	6	7	8
	<b>Adaptation kit for VDO tachograph test:</b> • Fixing light barrier • Proximity switch (BD 7xxx)	1 691 880 705			•	
	<b>Adaptation kit for Semmler tachograph control:</b> • Fixing light barrier • Roller support for Semmler rollers (BD 7xxx)	1 691 880 706			•	
	<b>Adaptation kit for VDO tachograph test:</b> • Fixing light barrier • Proximity switch (BD 8xxx)	1 691 810 736				•
	<b>Adaptation kit for Semmler tachograph control:</b> • Fixing light barrier • Roller support for Semmler rollers (BD 8xxx)	1 691 810 737				•
	<b>Adaptation kit left for Semmler tachograph control:</b> • Fixing light barrier • Roller support for Semmler rollers (BD 6xxx)	935 811 042		•		
	<b>Adaptation kit right for Semmler tachograph control:</b> • Fixing light barrier • Roller support for Semmler rollers (BD 6xxx)	935 811 043		•		
	Side slip tester MSS 8400	1 691 841 007	•	•	•	•
	Assembling case for MSS 8400	1 691 842 001	•	•	•	•
	Play detector GST 8508	1 691 850 100	•	•	•	•
	Assembling case for GST 8508	1 691 851 101	•	•	•	•

#### Min. PC requirements

- Operating system: Windows 7, Windows 10, 64 Bit
- Processor: Celeron 2.7 GHz
- Random access memory: 4 GB
- Hard disk: 500 GB
- Serial port: 2 x RS232 (COM)

#### Min. PC display requirements (trolley)

- Size: 27"
- Solution: 1920 x 1080
- Width-to-height ratio: 16 : 9

#### Min. HDMI-TV requirements (substitute for analogue display)

- Minimum size: 40"
- Recommended size: 55"
- Solution: 1920 x 1080
- Width-to-height ratio: 16 : 9

#### Min. tablet requirements

- Operating system: Android 5.0 or higher
- Minimum size: 8"
- Recommended size: 9,6"
- Width-to-height ratio: 16 : 9 or 16:10
- Basic requirement: WLAN network with router



Workshop 5

# Technical specifications

## Technical specifications of roller sets

Description	BD 5xxx	BD 6xxx	BD 7xxx	BD 8xxx	BD 8xxx S05
Measuring system	DMS	DMS	DMS	DMS	DMS
Dimensions (L x W x H)	1 325 x 680 x 590 mm	1 300 x 1 151 x 666 mm	1 300 x 1 040 x 680 mm	1 350 x 1 140 x 782 mm	1 350 x 1 140 x 782 mm
Weight without lifting device approx.	450 kg	710 kg	450 kg	750 kg	750 kg
Weight with lifting device approx.	N/A	N/A	700 kg	1 030 kg	1 030 kg
Coefficient of friction (dry)	0.8	0.8	0.8	0.8	0.8
Coefficient of Friction (wet)	0.7	0.7	0.7	0.7	0.7
Roller length	1 000 mm	1 000 mm	1 000 mm	1 000 mm	1 000 mm
Roller diameter	205 mm	280 mm	205 mm	280 mm	280 mm
Minimum track	900 mm	900 mm	900 mm	900 mm	900 mm
Maximum track	2 900 mm	2 900 mm	2 900 mm	2 900 mm	2 900 mm
Roller axle distance	400 mm	438 mm	398 mm	438 mm	438 mm
Height difference of rear roller to front roller	35 mm	50 mm	32 mm	50 mm	50 mm
Height difference roller edge to workshop floor	0 mm	0 mm	0 mm	0 mm	0 mm
Minimum wheel diameter	450 mm	450 mm	320 mm	320 mm	320 mm
Minimum rim size	10"	13"	10"	13"	13"
Maximum wheel diameter	1 640 mm	1 200 mm	1 000 mm	1 200 mm	1 200 mm
Maximum rim size	32"	40"	32"	40"	40"
Protection (according to DIN 40 050)	IP 54	IP 54	IP 54	IP 54	IP 54
Roller set lifting	–	–	200 mm	200 mm	200 mm

## Technical specifications of electrical motors

Description	BD 5xxx/BD 7xxx		BD 6xxx/BD 8xxx	
	Low revolution speed	High revolution speed	Low revolution speed	High revolution speed
Power supply	Via power box	Via power box	Via power box	Via power box
Principle of operation	Dahlander tapped winding: Change of speed in the ratio 1:2	Dahlander tapped winding: Change of speed in the ratio 1:2	Dahlander tapped winding: Change of speed in the ratio 1:2	Dahlander tapped winding: Change of speed in the ratio 1:2
Motor power	2 x 6.5 kW	2 x 8.5 kW	2 x 10 kW	2 x 12.5 kW
Test speed	2.2 km/h	4.4 km/h	2.3 km/h	4.6 km/h
Gear ratio	1 / 16.17	1 / 16.17	1 / 17.27	1 / 17.27
Motor revolution speed	1 435 1/min	2 915 1/min	1 450 1/min	2 950 1/min
Roller revolution speed	57.6 1/min	117.6 1/min	43.4 1/min	87.6 1/min
Motor connection cable	7 x 4 mm <sup>2</sup>	7 x 4 mm <sup>2</sup>	7 x 4 mm <sup>2</sup>	7 x 4 mm <sup>2</sup>

## Technical specifications of electrical motor BD 8xxx S05

Description	BD 8xxx S05	
	Low revolution speed	High revolution speed
Power supply	Via power box	Via power box
Principle of operation	Dahlander tapped winding: Change of speed in the ratio 1:2	Dahlander tapped winding: Change of speed in the ratio 1:2
Motor power	2 x 11 kW	2 x 13.5 kW
Test speed	2.66 km/h	5.29 km/h
Gear ratio	1 / 17.95	1 / 17.95
Motor revolution speed	1 450 1/min	2 950 1/min
Roller revolution speed	50 1/min	100 1/min
Motor connection cable	7 x 4 mm <sup>2</sup>	7 x 4 mm <sup>2</sup>



# BD-series 5, 6, 7 and 8: configurator

BD	X	X	X	X	S	X	X		
BD	5							5	Truck 13 t (Mechanics before 2017, PC Ready)
BD	6							6	Truck 16 to (PC Ready, mechanics before 2017)
BD	7							7	13t (Mechanics NEW 2017, PC Ready)
BD	8							8	18t (Mechanics NEW 2017, PC Ready)
BD		3						3	2 speed, rollers with granular coating
BD		4						4	2 speed, 4x4, rollers with granular coating
BD			2					2	1 000 mm rollers, WITH electromagnetic motor brake
BD			6					6	1 100 mm rollers, WITH electromagnetic motor brake
BD				0				0	Standard
BD				1				1	ASA livestream
BD				2				2	Hydraulic load simulation
BD				3				3	ASA livestream, hydraulic load simulation
BD				4				4	Hydraulic load simulation, 8-point-scale
BD				5				5	8-point-scale
BD				6				6	ASA livestream, 8-point-scale
BD				7				7	ASA livestream, hydraulic load simulation, 8-point-scale

## Special versions (Sxx)

BD					S	0		0	(neutral)
BD					S	1		1	230 V
BD					S		0	0	(neutral)
BD					S		4	4	380 V/60 Hz
BD					S		5	5	Up to 5.29 km/h revolution speed

## German scope of delivery (incl. ASA livestream) w/o hydraulic load simulation

BD	7	3	2	1				Roller set left	Roller set right	Control cabinet
BD	7	4	2	1				1 691 880 508	1 691 880 509	1 691 880 364
BD	7	4	2	1				1 691 880 508	1 691 880 509	1 691 880 372
BD	7	4	2	6				1 691 880 520	1 691 880 521	1 691 880 372
BD	8	3	2	1				1 691 810 510	1 691 810 511	1 691 810 258
BD	8	4	2	1				1 691 810 510	1 691 810 511	1 691 810 266
BD	8	4	2	6				1 691 810 524	1 691 810 525	1 691 810 266

## International scope of delivery w/o hydraulic load simulation

BD	7	3	2	0				Roller set left	Roller set right	Control cabinet
BD	7	4	2	0				1 691 880 508	1 691 880 509	1691 880 547
BD	7	4	2	0				1 691 880 508	1 691 880 509	1 691 880 535
BD	7	4	2	5				1 691 810 520	1 691 810 521	1 691 880 535
BD	8	3	2	0				1 691 810 510	1 691 810 511	1 691 810 553
BD	8	4	2	0				1 691 810 510	1 691 810 511	1 691 810 541
BD	8	4	2	5				1 691 810 524	1 691 810 525	1 691 810 541
BD	8	4	2	0	S	1	0	1 691 810 526	1 691 810 527	1 691 810 555
BD	8	4	2	5	S	1	0	1 691 810 528	1 691 810 529	1 691 810 555

BD	x	x	x	x	S	x	x		
----	---	---	---	---	---	---	---	--	--

#### German scope of delivery (incl. ASA livestream) with hydraulic load simulation

30 m cable included

BD	7	3	2	7				Roller set left	Roller set right	Control cabinet
BD	7	4	2	3				1 691 880 518	1 691 880 519	1 691 880 533
BD	7	4	2	3				1 691 880 514	1 691 880 515	1 691 880 541
BD	7	4	2	7				1 691 880 518	1 691 880 519	1 691 880 541
BD	8	3	2	7				1 691 810 512	1 691 810 513	1 691 810 539
BD	8	4	2	3				1 691 810 518	1 691 810 519	1 691 810 547
BD	8	4	2	7				1 691 810 512	1 691 810 513	1 691 810 547

#### International scope of delivery with hydraulic load simulation

30 m cable included

BD	7	3	2	4				Roller set left	Roller set right	Control cabinet
BD	7	4	2	2				1 691 880 518	1 691 880 519	1691 880 545
BD	7	4	2	2				1 691 880 514	1 691 880 515	1691 880 539
BD	7	4	2	4				1 691 880 518	1 691 880 519	1 691 880 539
BD	8	3	2	4				1 691 880 512	1 691 880 513	1691 880 551
BD	8	4	2	2				1 691 810 518	1 691 810 519	1 691 810 545
BD	8	4	2	4				1 691 810 512	1 691 810 513	1 691 810 545

BD	8	4	2	4	S	1	0	1 691 810 522	1 691 810 523	1 691 810 549
----	---	---	---	---	---	---	---	---------------	---------------	---------------

#### German scope of delivery (incl. ASA livestream)

15 m cable included

BD	5	3	2	1				Roller set left	Roller set right	Control cabinet
BD	5	4	2	1				1 691 880 339	1 691 880 340	1 691 880 364
BD	5	4	2	1				1 691 880 339	1 691 880 340	1 691 880 372
BD	5	4	2	6				1 691 880 347	1 691 880 348	1 691 880 372
BD	6	3	2	1				1 691 810 233	1 691 810 234	1 691 810 258
BD	6	4	2	1				1 691 810 233	1 691 810 234	1 691 810 266
BD	6	3	6	1				1 691 810 239	1 691 810 240	1 691 810 258
BD	6	4	6	1				1 691 810 239	1 691 810 240	1 691 810 266
BD	6	4	2	6				1 691 810 241	1 691 810 242	1 691 810 266
BD	6	4	6	6				1 691 810 243	1 691 810 244	1 691 810 266

#### International scope of delivery

15 m cable included

BD	5	3	2	0				Roller set left	Roller set right	Control cabinet
BD	5	4	2	0				1 691 880 339	1 691 880 340	1 691 880 547
BD	5	4	2	0				1 691 880 339	1 691 880 340	1 691 880 535
BD	5	4	2	5				1 691 880 347	1 691 880 348	1 691 880 535
BD	6	3	2	0				1 691 810 233	1 691 810 234	1 691 810 553
BD	6	4	2	0				1 691 810 233	1 691 810 234	1 691 810 541
BD	6	3	6	0				1 691 810 239	1 691 810 240	1 691 810 553
BD	6	4	6	0				1 691 810 239	1 691 810 240	1 691 810 541
BD	6	4	2	5				1 691 810 241	1 691 810 242	1 691 810 541
BD	6	4	2	5	S	0	4	1 691 810 275	1 691 810 276	1 691 810 541
BD	6	4	6	5				1 691 810 243	1 691 810 244	1 691 810 541
BD	6	4	2	0	S	1	0	1 691 810 267	1 691 810 268	1 691 810 555
BD	6	4	2	5	S	1	0	1 691 810 269	1 691 810 270	1 691 810 555
BD	6	4	6	0	S	1	0	1 691 810 271	1 691 810 272	1 691 810 555
BD	6	4	6	5	S	1	0	1 691 810 273	1 691 810 274	1 691 810 555

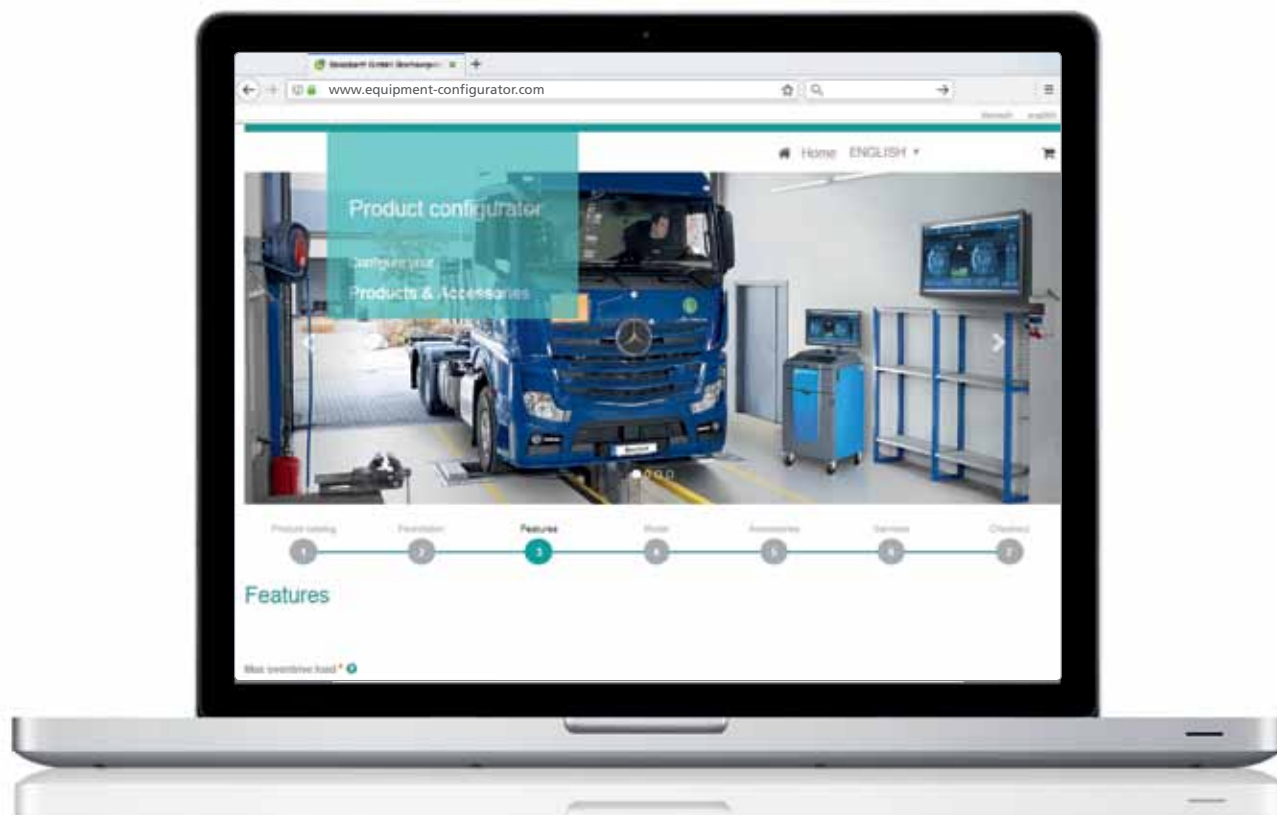
# Workshop 5





# Configuration via internet

[www.equipment-configurator.com](http://www.equipment-configurator.com)



Easy and fast online product configuration

## Quick and save configuration of the right brake tester

- Choose comfortably the brake tester, the control devices and the best functional accessories
- Save time by entering a structured product range, offering only combinations of compatible brake testers and accessories
- Choose brake tester, functions and accessories fitting to your workshop

**Do you still have any question about the product range or the configuration process? Please don't hesitate, to ask your Beissbarth sales partner.**

[sales@beissbarth.com](mailto:sales@beissbarth.com)  
[www.equipment-configurator.com](http://www.equipment-configurator.com)

# Beissbarth tire service for trucks



## Big-size tire mounting MS 78 RC

- Bi-directional
- Two turning speeds
- MS 78: operation via wired remote control
- MS 78 RC: operation via r.f. remote control
- Extension of rim size up to 56" (Special accessories)

## Wheel balancer MT 788

- Usable for passenger-car wheels
- Static and dynamic balancing
- Automatic measurement cycle
- Pneumatic lift for effortless clamping of heavy wheels
- 2 programmes for truck wheels
- alloy programs for passenger cars

[www.beissbarth.com](http://www.beissbarth.com)

### Beissbarth GmbH

Hanauer Strasse 101  
D-80993 Munich  
Germany

Telephone: +49-(0)89-14901-0  
Telefax: +49-(0)89-14901-246  
E-Mail: [sales@beissbarth.com](mailto:sales@beissbarth.com)

